

CERTIFIED CORNER RECORDATION

Corner South Quarter Corner, Section 33 T. 29 N. R. 33 W. P.M.M. Lincoln County

1893 Original General Land Office record by Daniel P. Mumbrue, Book 2819 Page 92:

"Set a post 3 ft. long, 3 ins. square, 24 ins. in the ground, for Stand. 1-4 Sec. Cor., marked S.C. 1-4 S. on N face; from which

A tamarack 10 ins. diam. bears N 13°W. 28 lks. distant marked S.C.1-4 S. B.T.

A tamarack 10 ins. diam. bears S 21 1/4°E. 7 lks. distant marked S.C.1-4 S. B.T."

2007 remonumentation by Michael J. Drenth 10684LS:

Found the stump remains of the Section 33, General Land Office, tamarack (larch) bearing tree, 12 inches diameter, 3 feet tall, with partially healed, axed face 2 feet above ground. Face is heavily weathered with no discernible scribing. The positions for the southerly bearing tree and the original wood post fell on the roadway and cutslope, nothing found.

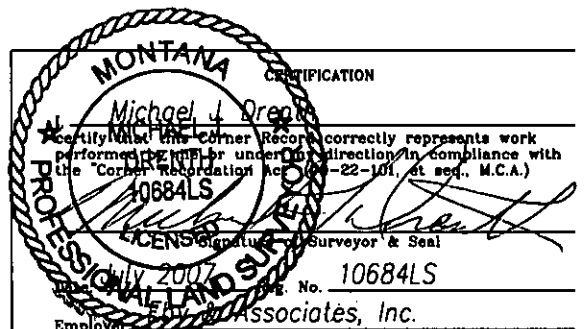
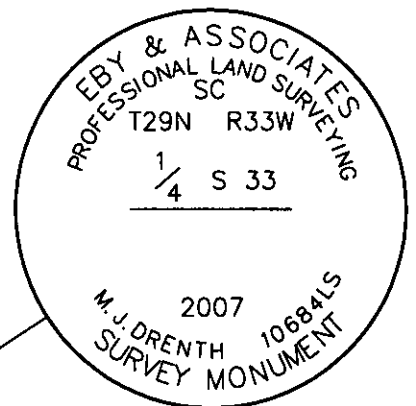
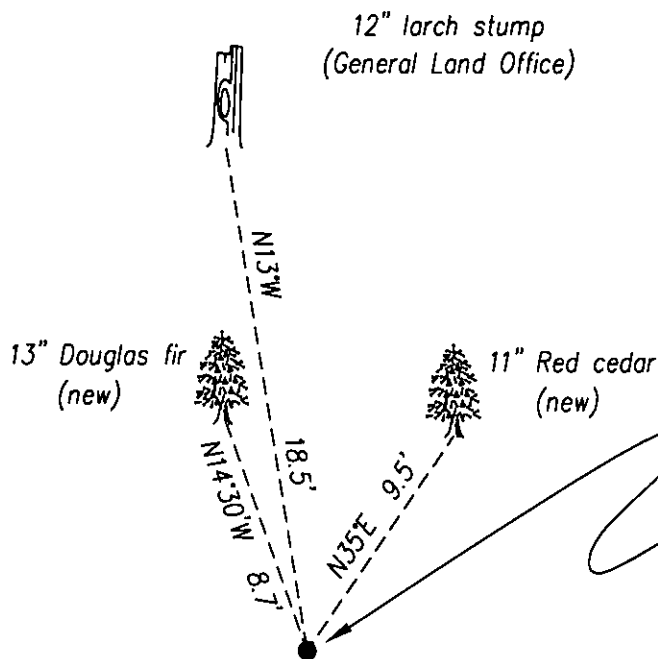
At the record bearing and distance from the original General Land Office bearing tree stump, I set an aluminum pipe, 2 1/2 inches diameter, 30 inches long, 25 inches in the ground, with a 3 1/4 inch diameter aluminum cap, marked as shown, and set in a 2 1/2 foot diameter stone collar.

From which I establish 2 new bearing trees:

A Red cedar, 11 inches diameter, bears N. 35° E., 9.5 feet distant, scribed "X" and "BT".

A Douglas fir, 13 inches diameter, bears N. 14 1/2° W., 8.7 feet distant, scribed "1/4 S 33 SC BT".

I axe snow blazes on both trees, paint the blazes and faces red, and attach Land Survey Monument signs to them. All distances measured with steel tape. All bearings measured with Silva hand compass, 18° east magnetic declination.



Office of Clerk 204748 BOOK: CCR CC&R'S PAGE: 11076 Pages: 1 "corner

record" was fi STATE OF MONTANA LINCOLN COUNTY

RECORDED: 07/31/2007 11:29 KOI: CC&R'S

TAMMY D. LAUER CLERK AND RECORDER

FEE: \$0.00

TO: FILED

BY: Lill Blomdahl, deputy , in

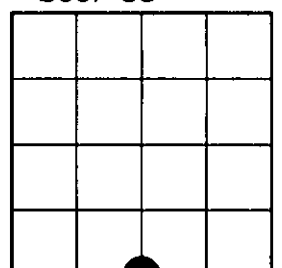
book No. _____

County Official

Cross Index No. Z - 11 T. 29N R. 33W PMM

Adopted July 1, 1981, Montana Board of Professional Engineers & Land Surveyors

Sec. 33



• corner this sheet