

# CERTIFIED CORNER RECORDATION

CORNER C 1/4 S 18 T. 29 N., R. 33 W., P.M.M. LINCOLN COUNTY

## RECORD:

NONE

178324 BOOK: CCR CC&R'S PAGE: 10654 Pages: 1  
STATE OF MONTANA LINCOLN COUNTY  
RECORDED: 08/09/2004 12:44 KOI: CC&R'S  
CORAL M. CUMMINGS CLERK AND RECORDER  
FEE: \$0.00 BY: Glennie Deen  
TO: FILED

Deputy

## FOUND EVIDENCE:

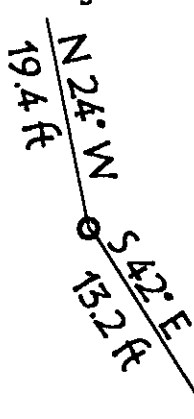
NONE

## PERPETUATION:

Set a 5/8 Ins Dia. rebar 30 Ins long 28 Ins in the ground with a 1 1/4 Ins plastic cap stamped K.E.D. 4975-S  
From which  
A 13 1/2 Ins DBH Douglas Fir scribed C 1/4 S 18 BT bears N 24° W 19.40 feet Dist.  
A 6 Ins DBH Douglas Fir scribed x BT bears S 42° E 13.20 feet Dist.  
Painted 6 Ins wide bands and attached bearing tree signs to both trees.

## MAGNETIC DECLINATION: 18° E

13.5" Douglas Fir



6" Douglas Fir

## CERTIFICATION

I, GEORGE CLARK

Certify the information shown herein is true and correct

Signature of Ground Party Chief

I, KENNETH E. DAVIS

certify that this Corner Record correctly represents work performed by me or under my direction in compliance with the "Corner Recordation act"

CHARTERED SURVEYOR, M.C.A.

Signature of Surveyor & Seal

Date: 8/9/04 Rec No. 4975-S

Employer: DAVIS/DAVIS SURVEYING INC

## SKETCH OF CORNER

Office of Clerk and Recorder, County of \_\_\_\_\_

This "corner record" was filed for record on \_\_\_\_\_

was noted on the cross-index plat and is assigned page

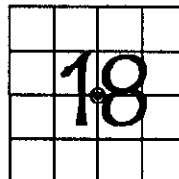
No. 10654

In book No. 178324

doe. 23 County Official

Cross Index No. C 1/4 S 18 T. 29 N., R. 33 W., P.M.M.

## SECTION



THIS CORNER