

INSTRUCTIONS

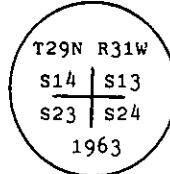
1. Original and/or subsequent record used to evaluate the corner position.
2. Description of evidence found, note discrepancies in the record, state method of establishing lost or obliterated corners.
3. Description of monument and accessories set to perpetuate the corner position.
4. Sketch of corner, show all pertinent data which can best be shown in a sketch example, corner marking, topography ties, position of accessories, etc.
5. Certification must be signed and sealed by Land Surveyor registered in the State of Montana.
6. Fill in Cross Index & Section Diagram at bottom of sheet.

CERTIFIED CORNER RECORDATION

Corner Secs. 13, 14, 23, & 24 T. 29 N. R. 31 W. P.M.M. Lincoln County

I. 1893 original G.L.O. record by D. P. Mumbree: Set wood post monument and marked four bearing trees.

1963 remonumentation B.L.M. record by G. F. Pittman et al: "The cor. of secs. 13, 14, 23 and 24, as determined from the remains of the original bearing trees. At the corner point; Set an iron post, 30 ins. long, 2 1/2 ins. diam., 26 ins. in the ground, with brass cap mkd.



from which

The remains of the original bearing trees:

- A decayed stump, bears N60° E, 44 lks. dist. (Record)
- A decayed stump, bears S36 1/2° E, 42 lks. dist. (Record)
- A stump, 16 ins. diam., bears S30 1/2° W, 42 lks. dist., visible marks S23 BT. (Record: S33° W, 42 lks.)
- A stump, 30 ins. diam., bears N22 1/2° W, 57 lks. dist. (Record)

The new bearing trees:

- A pine, 13 ins. diam., bears N31 3/4° E, 54 lks. dist., mkd. T29N R31W S31 BT.
- A pine, 7 ins. diam., bears S20 3/4° E, 37 lks. dist., mkd. T29N R31W S24 BT.
- A pine, 8 ins. diam., bears S20 3/4° W, 23 lks. dist., mkd. T29N R31W S23 BT.
- A fir, 9 ins. diam., bears N45 3/4° W, 47 lks. dist., mkd. T29N R31W S14 BT.

Raise a flat mound of stone, 2 ft. diam., around the iron post."

1984 Corner Recordation by T. C. Hill, Reg. #5612-S: "Set 6 ft. galvanized steel guard post with Survey Marker decal attached, bears north, 2 lks. dist."

II. Found a 2 1/2 ins. diam. iron pipe, 6 ins. out of ground with 3 1/4 ins. diam. B.L.M. brass cap marked as shown above, from which

- A pine, 14 ins. diam., bears N32° E, 35.9 ft. (54 lks.) dist., healed face.
- A root wad, bears S36° E, 27.7 ft (42 lks.) dist.,
- A fallen pine, 13 ins. diam., bears S18° E, 24.4 ft (37 lks.) dist., visible scribe.
- A fallen pine, 9 ins. diam., bears S21° W, 14.4 ft. (22 lks.) dist., visible scribe.
- A rotten stump, bears S30° W, 27.5 ft. (42 lks.) dist.
- A fir, 11 ins. diam., bears N47° W, 31.2 ft. (47 lks.) dist., healed face.
- A rotten stump, bears N22° W, 37.5 ft.

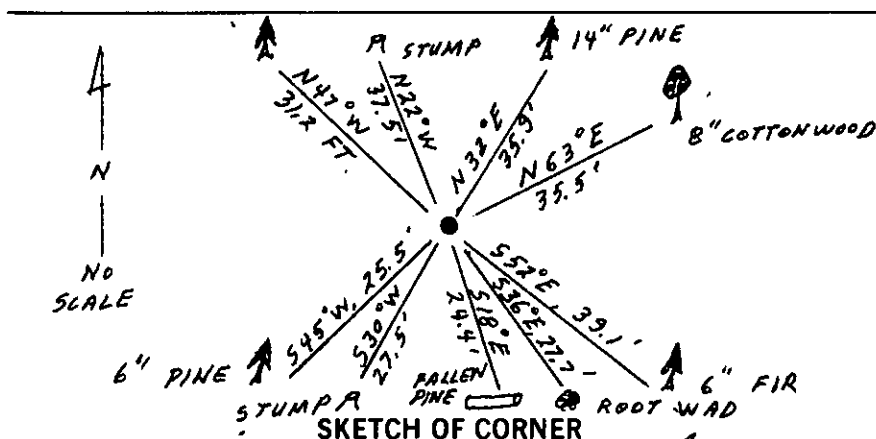
III. Establish three new bearing trees:

- A cottonwood, 8 ins. diam., bears N63° E, 35.5 ft. dist., mkd. T29N R31W S13 BT.
- A fir, 6 ins. diam., bears S52° E, 39.1 ft. dist., mkd. T29N R31W S24 BT.
- A pine, 6 ins. diam., bears S45° W, 25.5 ft. dist., mkd. T29N R31W S23 BT.

Painted red bands around the bearing trees and attached Land Survey Monument and Bearing Tree signs.

Set steel guard post with Land Survey Mon. and Property Boundary decals, East, 3 ft. dist.

Magnetic Declination: 20° East



CERTIFICATION

I, Kevin A. Todd

certify the information shown herein is true and correct.

Signature Ground Plan, Chief of Party

Ronald A. Pearson

1. Ronald A. Pearson

certify that this Corner Record correctly represents work performed by me or under my direction in compliance with the "Corner Recordation Act" (70-22-101 et seq., M.C.A.)

Signature of Surveyor & Seal

Date: 7/19/93 Reg. No. 9008LS

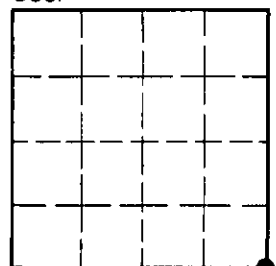
Employer: U.S. FOREST SERVICE

Office of Clerk and Recorder, County of Lincoln. This "corner record" was filed for record on July 23, 1993 was noted on the cross-index plat and is assigned page No. 5351, in book No. Coral M. Cummings & B

County Official

Cross Index No. N-21 T. 29 N R. 31 W P.M.M.

Sec. 14



• - corner this sheet