

CERTIFIED LAND CORNER RECORDATION

DESCRIPTION OF CORNER EVIDENCE FOUND, AND ORIGINAL RECORD (IF KNOWN)

N 1/4 COR SEC 1, T29N, R31W, PM.M.
FOUND 4" SQUARE POST SCRIBED
1/4. NO EVIDENCE OF ORIGINAL BEAR-
ING TREES.
ORIGINAL RECORDS.

SET A 3" SQUARE WOOD POST SCRIBED
1/4. MADE 2 B.T.s. A 12" COTONWOOD
BEARS N46-30W 44 LKS, AND A
14" COTONWOOD BEARS S68-15E 27 LKS.
E 1/6, SEC 1, SEC 36,
NO ORIGINAL RECORD

DESCRIPTION OF MONUMENT AND ACCESSORIES ESTABLISHED
TO PERPETUATE THE ORIGINAL LOCATION OF THIS CORNER:

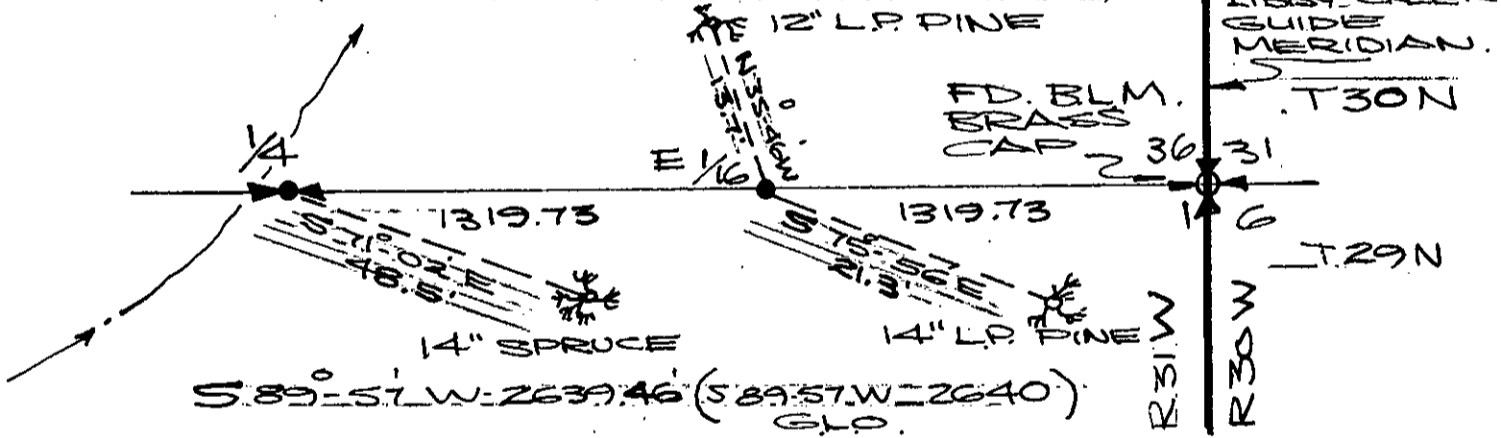
N 1/4 COR SEC 1, T29N, R31W, PM.M. Date of work: 8-76

I DRIVE A 1/2" PIPE W/ BRASS CAP
DOWN THRU THE REMAINS OF THE
BROKEN OFF POST DESCRIBED ABOVE
I MAKE ONE R.M. SEE BELOW.

E 1/6 COR, SEC 1, SEC 36,

I SET A 1/2" PIPE W/ BRASS CAP
MID WAY BETWEEN THE SECTION
CORNER AND 1/4 CORNER.
I MAKE TWO R.M.'S. SEE BELOW.

SKETCH, WITH COURSE AND DISTANCE TO ADJACENT CORNERS IF DETERMINED IN THIS SURVEY.
(MAY SKETCH OR PASTE REPRODUCTION ON REVERSE SIDE.)



Surveyor's Seal



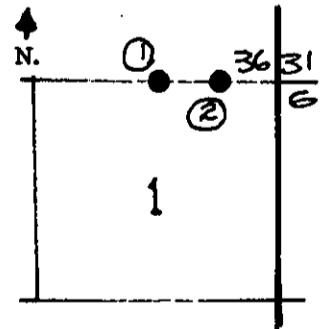
I, MELVIN LAUTEREN
certify that the information shown herein is true and
correct.

Melvin D. Lauteren
Signature of Ground Party Chief

I, MELVIN LAUTEREN
certify that I have carefully performed or reviewed the
work done on the diagrammed corner as reported on this
recording form and approve the same.

Melvin D. Lauteren
Signature of Surveyor

DIAGRAM OF CORNER:



● = Corner recorded on the sheet.

① N 1/4 SEC 1,
T 29 N, R 31 W
② E 1/6 S36-31

4232-S
Registration Number

Office of Clerk and Recorder, County of *Lincoln*

This "corner record" was filed for record on the *18th* day of *August*, 19*76*, was noted on the cross-index plat and is
assigned page No. *487*, in book No. *1*

Glenn L. Daugherty
County Official
Deputy