

## INSTRUCTIONS

1. Original and/or subsequent record used to evaluate the corner position.
2. Description of evidence found, note discrepancies in the record, state method of establishing lost or obliterated corners.
3. Description of monument and accessories set to perpetuate the corner position.
4. Sketch of corner, show all pertinent data which can best be shown in a sketch example, corner marking, topography ties, position of accessories, etc.
5. Certification must be signed and sealed by Land Surveyor registered in the State of Montana.
6. Fill in Cross Index & Section Diagram at bottom of sheet.

## CERTIFIED CORNER RECORDATION

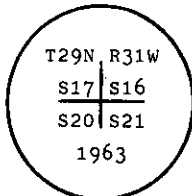
Corner SW Sec. Cor. Sec. 16 T. 29 N. R. 31 W. P.M.M. Lincoln County

- I. 1893 G.L.O. Original record by D. P. Mumbrue: Set a 4 ft. wood post as monument and scribed four bearing trees.

1963 B.L.M. Remonumentation record by G. F. Pittman et al: "The cor. of secs. 16, 17, 20, and 21, monumented with the decayed remains of a wooden post, firmly set in the ground, and witnessed by the remains of the original bearing trees.

At the corner point

Set an iron post, 30 ins. long, 2 1/2 ins. diam., 26 ins. in the ground, with brass cap mkd.



from which

The remains of the original bearing trees:

A stumphole, bears N64 1/4° E, 32 lks. dist., remains of tree lying on ground, with illegible marks. (Record: N63 1/2° E, 32 lks.)

A stumphole, bears S61° E, 20 lks. dist., remains of tree lying on ground, mkd. T29N R31W S31 BT. (Record: S62 1/4° E, 20 lks.)

A larch, 23 ins. diam., bears S79 1/2° W, 31 lks. dist., visible marks T29N R31W S20. (Record)

A stumphole, bears N71 1/2° W, 46 lks. dist., remains of tree lying on ground, visible marks T29N R31W S17. (Record: N69 1/4° W, 46 lks.)

The new bearing trees:

A pine, 13 ins. diam., bears N70° E, 19 lks. dist., mkd. T29W R31W S16 BT.

A fir, 9 ins. diam., bears S49 1/2° E, 14 lks. dist., mkd. T29N R31W S21 BT.

A pine, 9 ins. diam., bears N32 1/2° W, 21 lks. dist., mkd. T29N R31W S17 BT.

Bury the remains of the original wooden post alongside of the iron post."

- II. Found an iron pipe, 2 1/2 ins. diam., 6 ins. above ground, with a 3 1/4 ins. diam., B.L.M. brass cap marked as shown above, from which

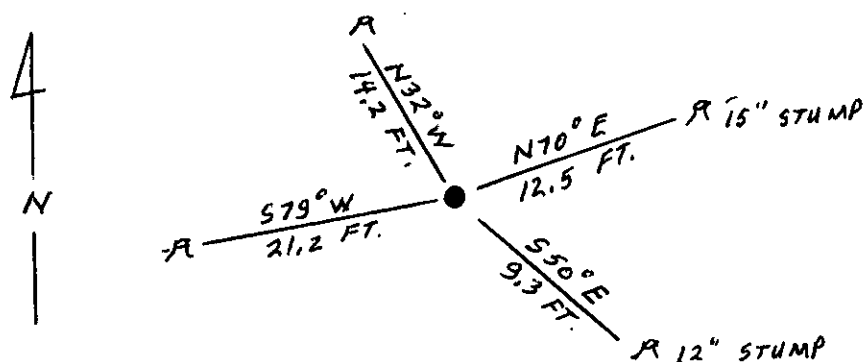
A burnt pine stump, 15 ins. diam., bears N70° E, 12.5 ft. dist., no scribing visible.

A fir stump, 12 ins. diam., bears S50° E, 9.3 ft. dist., with log laying alongside, scribed T29.

A burnt larch stump, 20 ins. diam., bears S79° W, 21.2 ft. dist., no scribing visible.

A pine stump, 9 ins. diam., bears N32° W, 14.2 ft. dist., with burnt face, no scribing visible.

- III. Attached Land Survey Monument and Bearing Tree signs to the stumps. No new accessories within limits. Set a 6 ft. galvanized steel guard post with Land Survey Marker and Property Boundary decals. North, 3 ft.



SKETCH OF CORNER

## CERTIFICATION

I, Jane Eby

certify the information shown herein is true and correct.

Signature Ground Party Chief

I, Alvah F. Hughes

certify that this Corner Record correctly represents work performed by me or under my direction in compliance with the Corner Recordation Act" (70-22-101, et seq. M.C.A.)

Alvah F. Hughes  
Signature of Surveyor

Date: 4/16/90

Reg. No. 2322

Employer: U.S. FOREST SERVICE

Office of Clerk and Recorder, County of Lincoln. This "corner record" was filed for record on Aug 6, 1990 was noted on the cross-index plat and is assigned page No. 4263, in book No. \_\_\_\_\_

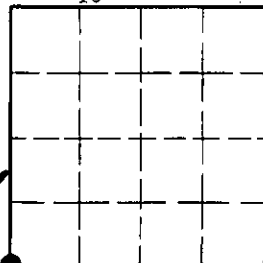
Janet B. Sugil by Bill Buckell  
County Official

N-9

29 N 31 W

Cross Index No. \_\_\_\_\_ T. \_\_\_\_\_ R. \_\_\_\_\_ P.M.M.

Sec. 16



• - corner this sheet