

INSTRUCTIONS

1. Original and/or subsequent record used to evaluate the corner position.
2. Description of evidence found, note discrepancies in the record, state method of establishing lost or obliterated corners.
3. Description of monument and accessories set to perpetuate the corner position.
4. Sketch of corner, show all pertinent data which can best be shown in a sketch example, corner marking, topography ties, position of accessories, etc.
5. Certification must be signed and sealed by Land Surveyor registered in the State of Montana.
6. Fill in Cross Index & Section Diagram at bottom of sheet.

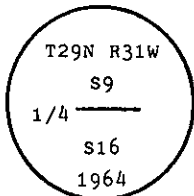
CERTIFIED CORNER RECORDATION

Corner 1/4 of Secs. 9 & 16 T. 29 N. R. 31 W. P.M.M. Lincoln County

I. 1893 G.L.O. Original record by D. P. Mumbrue: Set a wood 3 ft. wood post as monument and scribed two pine bearing trees.

1964 B.L.M. Remonumentation record by G. F. Pittman et al: "The 1/4 sec. cor. of scs. 9 and 16, monumented with a disintegrated wooden post, firmly set in the ground, and witnessed by the remains of the original bearing trees. At the corner point

Set an iron post, 30 ins. long, 2 1/2 ins. diam., 27 ins. in the ground, with brass cap mkd.



from which

The remains of the original bearing trees:

- A stumphole, bears S25° E, 19 lks. dist., remains of tree lying on ground, mkd. 1/4 S BT. (record)
- A pine, 16 ins. diam., bears N12 3/4° W, 26 lks. dist., mkd. with an overgrown blaze. (record)

The new bearing tree:

- A pine, 12 ins. diam., bears S62° W, 16 lks. dist., mkd. 1/4 S16 BT.

Bury the remains of the original wooden post alongside of the iron post."

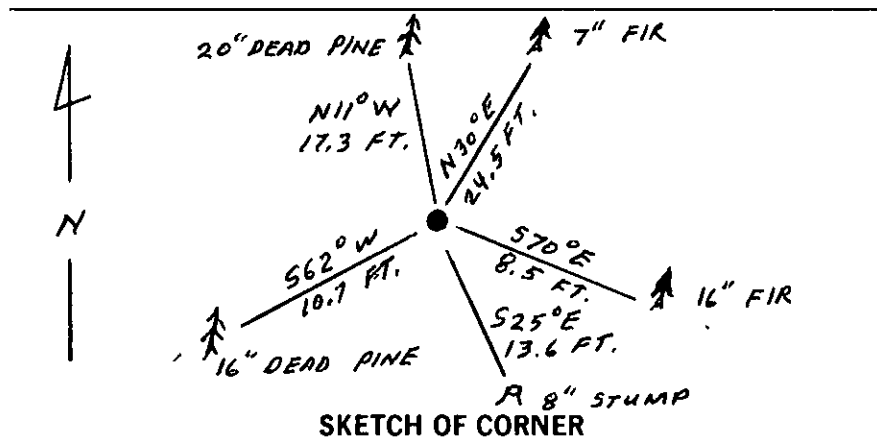
II. Found a 2 1/2 ins. diam. iron pipe, 7 ins. out of ground with a 3 1/4 ins. diam., B.L.M. brass cap marked as shown above, from which

- A decayed stump, 8 ins. diam., bears S25° E, 13.6 ft. (20.6 lks.) dist., scribe is visible.
- A dead ponderosa pine, 20 ins. diam., bears N11° W, 17.3 ft. (26.2 lks.) dist., overgrown blaze.
- A dead ponderosa pine, 16 ins. diam., bears S62° W, 10.7 ft. (16.2 lks.) dist., overgrown blaze.

III. Established two new bearing trees:

- A douglas fir, 7 ins. diam., bears N30° E, 24.5 ft. dist., scribed 1/4 S9 BT.
- A douglas fir, 16 ins. diam., bears S70° E, 8.5 ft. dist., scribed 1/4 S16 BT.

Attached Land Survey Monument and Bearing Tree signs on bearing trees. Set a 6 ft. galvanized steel guard post with Land Survey Marker and Property Boundary decals, East, 3 ft.  
Declination: 20° 30' East



CERTIFICATION

I. Raymond Pederson  
certify the information shown herein is true and correct.

Signature Ground Party Chief

I. Alvah F. Hughes  
certify that this Corner Record correctly represents and is certified by me or under my direction in compliance with the "Montana Recordation Act" (70-22-101, et seq., M.C.A.)

Alvah F. Hughes  
Signature of Surveyor & Sealer

Date: 6/19/90 Reg. No. 7382

Employer: U.S. FOREST SERVICE

Seal: MONTANA REGISTERED LAND SURVEYOR

Office of Clerk and Recorder, County of Lincoln. This "corner record" was filed for record on Aug 6, 1990 was noted on the cross-index plat and is assigned page No. 4262, in book No. \_\_\_\_\_

Janet St. Sigis by Bill Bruch  
County Official

