

## INSTRUCTIONS

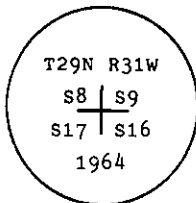
1. Original and/or subsequent record used to evaluate the corner position.
2. Description of evidence found, note discrepancies in the record, state method of establishing lost or obliterated corners.
3. Description of monument and accessories set to perpetuate the corner position.
4. Sketch of corner, show all pertinent data which can best be shown in a sketch example, corner marking, topography ties, position of accessories, etc.
5. Certification must be signed and sealed by Land Surveyor registered in the State of Montana.
6. Fill in Cross Index & Section Diagram at bottom of sheet.

## CERTIFIED CORNER RECORDATION

Corner of Secs. 8, 9, 16 & 17 T. 29 N., R. 31 W., P.M.M. Lincoln County

- I. 1893 G.L.O. original record by D. P. Mumbrue: Set a wood post as monument and four bearing trees.

1964 B.L.M. remonumentation record by G. F. Pittman et al: "The cor. of secs. 8, 9, 16 and 17, monumented with a disintegrated wooden post, firmly set in the ground, and witnessed by the remains of two of the original bearing trees. At the corner point, set an iron post, 30 ins. long, 2 1/2 ins. diam., 27 ins. in the ground, with brass cap mkd.



from which

The remains of the original bearing trees:

- A stump, 28 ins. diam., bears N23 3/4° E, 5 lks. dist., visible marks BT. (Record)  
A stumphole, bears S30 1/2° W, 32 lks. dist., remains of tree lying on ground, mkd. with an overgrown blaze. (Record)

The new bearing trees:

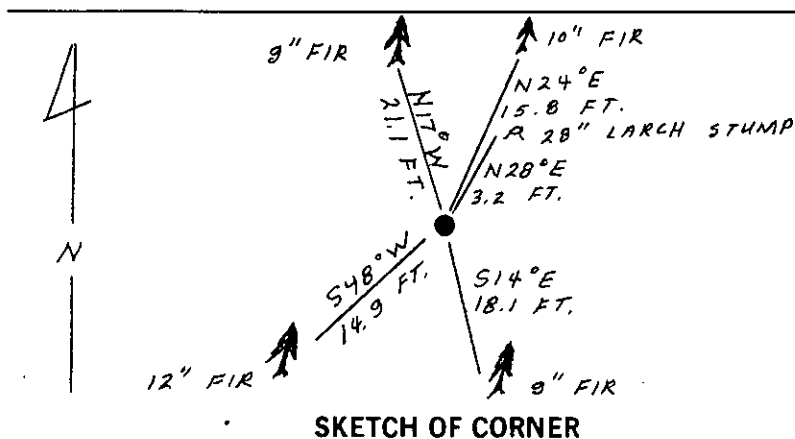
- A fir, 6 ins. diam., bears N20° E, 24 lks. dist., mkd. T29N R31W S9 BT.  
A fir, 8 ins. diam., bears S15° E, 27 lks. dist., mkd. T29N R31W S16 BT.  
A fir, 9 ins. diam., bears S46° W, 22 lks. dist., mkd. T29N R31W S17 BT.  
A fir, 7 ins. diam., bears N22 1/2° W, 32 lks. dist., mkd. T29N R31W S8 BT.

Bury the remains of the original wooden post alongside of the iron post."

- II. Found a 2 1/2 in. diam. iron pipe, 5 ins. out of ground with a 3 1/4 in. diam., B.L.M. brass cap marked as shown above, from which

- A fir, 10 ins. diam., bears N24° E, 15.8 ft. (23.9 lks.) dist., overgrown scribe. (B.L.M. rcd.)  
A larch stump, 28 ins. diam., bears N28° E, 3.2 ft. (4.8 lks.) dist., scribe W 9 is visible. (G.L.O. rcd.)  
A fir, 9 ins. diam., bears S14° E, 18.1 ft. (27.4 lks.) dist., scribe pitched over. (B.L.M. rcd.)  
A fir, 12 ins. diam., bears S48° W, 14.9 ft. (22.6 lks.) dist., scribe T29N R31W S17 BT is visible. (B.L.M. rcd.)  
A fir, 9 ins. diam., bears N17° W, 21.1 ft. (32 lks.) dist., scribe T29N R31W S8 BT is visible. (B.L.M. rcd.)

- III. Painted red bands around the bearing trees and attached Land Survey Monument and Bearing Tree signs.  
Set a 6 ft. galvanized steel guard post with Land Survey Marker and Property Boundary decals, South, 3 ft.  
Magnetic Declination: 20° 30' East



## CERTIFICATION

I, Robin Glazier  
certify the information shown herein is true and correct.

Signature Ground Party Chief

I, Alvah F. Hughes  
certify that this Corner Record correctly represents work performed by me or under my direction in compliance with the "Corner Recordation Act" (70-22-101, et seq., M.C.A.)

Signature of Surveyor & Seal ALVAH F. HUGHES  
322 LS

Date: 1/5/90 Reg. No. 7322

Employer: U.S. FOREST SERVICE

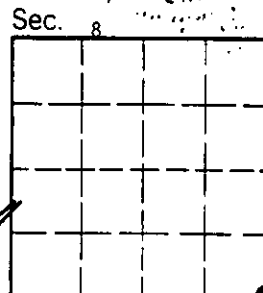
## SKETCH OF CORNER

Office of Clerk and Recorder, County of Lincoln. This "corner record" was filed for record on Jan 16, 1990 was noted on the cross-index plat and is assigned page No. 4217, in book No. \_\_\_\_\_

Janet B. Sugit  
County Official

Cross Index No. J-9 T. 29 N R. 31 W P.M.M.

Adopted July 1, 1981, Montana Board of Professional Engineers & Land Surveyors



• - corner this sheet