

INSTRUCTIONS

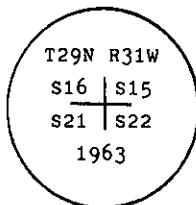
1. Original and/or subsequent record used to evaluate the corner position.
2. Description of evidence found, note discrepancies in the record, state method of establishing lost or obliterated corners.
3. Description of monument and accessories set to perpetuate the corner position.
4. Sketch of corner, show all pertinent data which can best be shown in a sketch example, corner marking, topography ties, position of accessories, etc.
5. Certification must be signed and sealed by Land Surveyor registered in the State of Montana.
6. Fill in Cross Index & Section Diagram at bottom of sheet.

CERTIFIED CORNER RECORDATION

Corner of Secs. 15, 16, 21 & 22 T. 29 N. R. 31 W. P.M.M. Lincoln County

- I. 1893 G.L.O. original record by D. P. Mumbrue: Set a wooden post as monument and four bearing trees.

1964 B.L.M. remonumentation record by G. F. Pittman et al: "The cor. of secs. 15, 16, 21 and 22, monumented with the decayed remains of a wooden post, firmly set in the ground, and witnessed by the remains of three of the original bearing trees. At the corner point, set an iron post, 30 ins. long, 2 1/2 ins. diam., 26 ins. in the ground, with brass cap mkd.



from which

The remains of the original bearing trees:

- A stump, 20 ins. diam., bears $N49^{\circ}E$, 39 lks. dist., with illegible scribing. (Record)
 A decayed stump, bears $S77\frac{1}{4}^{\circ}E$, 13 lks. dist. (Record)
 A dead fir, 28 ins. diam., bears $N8\frac{1}{4}^{\circ}W$, 21 lks. dist., with illegible scribing. (Record)

The new bearing trees:

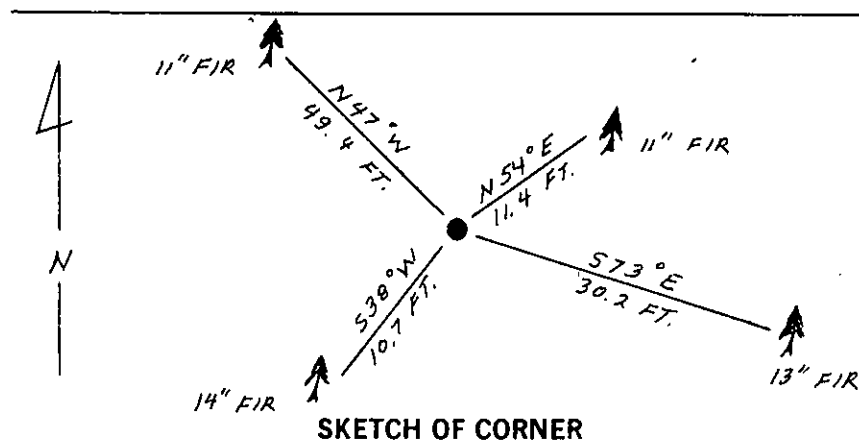
- A fir, 8 ins. diam., bears $N54\frac{1}{2}^{\circ}E$, 17 lks. dist., mkd. T29N R31W S15 BT.
 A fir, 11 ins. diam., bears $S74^{\circ}E$, 46 lks. dist., mkd. T29N R31W S22 BT.
 A fir, 10 ins. diam., bears $S33\frac{1}{4}^{\circ}W$, 16 lks. dist., mkd. T29N R31W S21 BT.
 A fir, 9 ins. diam., bears $N50^{\circ}W$, 75 lks. dist., mkd. T29N R31W S16 BT.

Bury the remains of the original wooden post alongside and raise a flat mound of stone, 2 ft. diam., around the iron post."

- II. Found a 2 1/2 in. diam. iron pipe, 2 ins. out of the ground in a 2 ft. diam. mound of stone, with a 3 1/4 in. diam., B.L.M. brass cap attached, marked as shown above, from which

- A fir, 11 ins. diam., bears $N54^{\circ}E$, 11.4 ft. (17.3 lks.) dist., scribe overgrown. (B.L.M. recd.)
 A fir, 13 ins. diam., bears $S73^{\circ}E$, 30.2 ft. (45.8 lks.) dist., scribe 9N R31W S22 BT is visible. (B.L.M. recd.)
 A fir, 14 ins. diam., bears $S38^{\circ}W$, 10.7 ft. (16.2 lks.) dist., scribe overgrown. (B.L.M. recd.)
 A fir, 11 ins. diam., bears $N47^{\circ}W$, 49.4 ft. (74.8 lks.) dist., scribe overgrown. (B.L.M. recd.)

- III. Painted red bands around the bearing trees and attached Land Survey Monument and Bearing Tree signs.
 Set a 6 ft. galvanized steel guard post with Land Survey Marker and Property Boundary decals, West, 3 ft.
 Magnetic Declination: $20^{\circ}30'$ East



SKETCH OF CORNER

CERTIFICATION

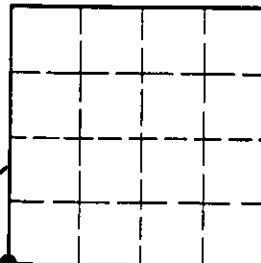
I, Robin Glazier
 certify the information shown herein is true and correct.

Signature Ground Party Chief
 I, Alvah F. Hughes
 certify that this Corner Record correctly represents work performed by me or under my direction in compliance with the "Corner Recordation Act" (70-22-101, et seq., M.C.A.).
Alvah F. Hughes
 Signature of Surveyor & Seal
 Date: 1/5/90 Reg. No. 7322
 Employer: U.S. FOREST SERVICE

Office of Clerk and Recorder, County of Lincoln. This "corner record" was filed for record on Jan 16, 1990 was noted on the cross-index plat and is assigned page No. 4216, in book No. _____

Cross Index No. N-13 T. 29 N. R. 31 W. P.M.M.

Sec. 15



• - corner this sheet