

INSTRUCTIONS

1. Original and/or subsequent record used to evaluate the corner position.
2. Description of evidence found, note discrepancies in the record, state method of establishing lost or obliterated corners.
3. Description of monument and accessories set to perpetuate the corner position.
4. Sketch of corner, show all pertinent data which can best be shown in a sketch example, corner marking, topography ties, position of accessories, etc.
5. Certification must be signed and sealed by Land Surveyor registered in the State of Montana.
6. Fill in Cross Index & Section Diagram at bottom of sheet.

CERTIFIED CORNER RECORDATION

Corner SOUTHEAST CORNER SECTION 14 T. 29N R. 31W P.M.M. LINCOLN County

- I. 1893 Original GLO Record: Set a post 4 ft. long, 4 ins. square, 24 ins. in the ground, for cor. to secs. 13, 14, 23 & 24, marked notches on edges and marked four bearing trees.
- 1963 BLM Remonumentation: The cor. of secs. 13, 14, 23 & 24, as determined from the remains of the original bearing trees. At the corner point, set an iron post, 30 ins. long, 2½ ins. diam., 26 ins. in the ground with brass cap marked as shown, from which:

T29N R31W
S14 | S13
S23 | S24
1963

The remains of the original bearing trees:

- A decayed stump, bears N60°E, 44 lks. dist., (Record)
- A decayed stump, bears S36½°E, 42 lks. dist., (Record)
- A stump, 16 ins. diam., bears S30½°W, 42 lks. dist., marked S23 BT (Record: S33°W, 42 lks.).
- A stump, 30 ins. diam., bears N22½°W, 57 lks. dist., (Record)

The new bearing trees:

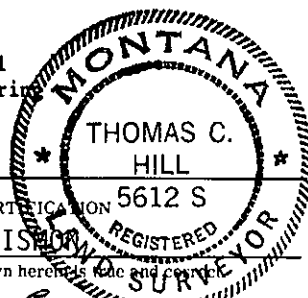
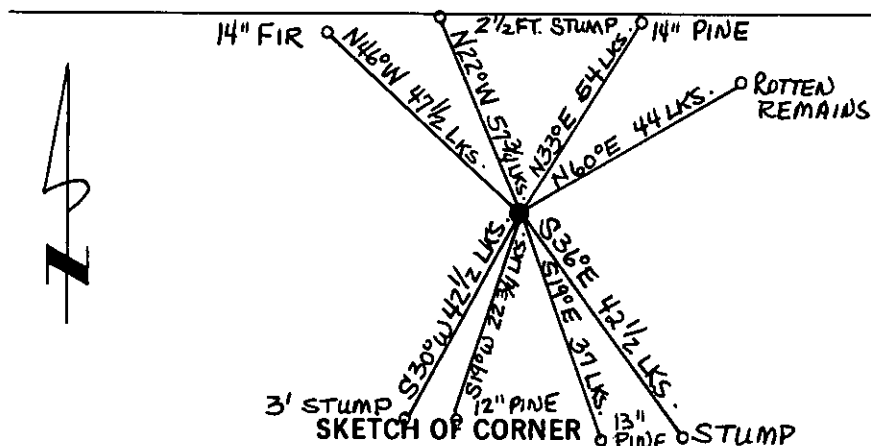
- A pine, 13 ins. diam., bears N31°45'E, 54 lks. dist., marked T29N R31W S13 BT.
- A pine, 7 ins. diam., bears S20°45'E, 37 lks. dist., marked T29N R31W S24 BT.
- A pine, 8 ins. diam., bears S20°45'W, 23 lks. dist., marked T29N R31W S23 BT.
- A fir, 9 ins. diam., bears N45°45'W, 47 lks. dist., marked T29N R31W S14 BT.

Raise a mound of stone, 2 ft. diam., around the iron post.

- II. I found a BLM brass cap, 6 ins. above ground, in old road bed, from which:

- A fir, 14 ins. diam., bears N46°W, 47½ lks. dist., scribing overgrown.
- A 2½ ft. stump, bears N22°W, 57 ¾ lks. dist., scribing not visible.
- A pine, 14 ins. diam., bears N33°E, 54 lks. dist., scribing visible.
- A stump, bears S36°E, 42½ lks. dist., scribing not visible.
- A pine, 13 ins. diam., bears S19°E, 37 lks. dist., scribing visible.
- A pine, 12 ins. diam., bears S19°W, 22 ¾ lks. dist., scribing visible.
- A 3 ft. stump, bears S30°W, 42½ lks. dist., scribing visible.
- Rotten remains, bear N60°E, 44 lks. dist.

- III. I set a 6 ft. galvanized steel guard post with a Survey Marker decal attached, bears north, 2 lks. dist. I painted red bands around bearing trees and attached BT and Land Survey Monument signs.



I, GARY C. CRISTOFER
certify the information shown hereon is true and correct.
Gary C. Cristofer
Signature Ground Party Chief

I, THOMAS C. HILL
certify that this Corner Record correctly represents work performed by me or under my direction in compliance with the "Corner Recordation Act" (78-22-101, et seq., M.C.A.)
Thomas C. Hill
Signature of Surveyor & Seal

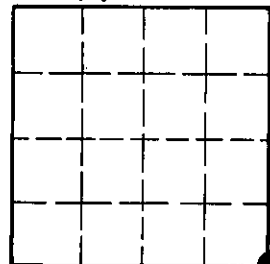
Date: 12/28/84 Reg. No. 5612-S

Employer: U.S.D.A. FOREST SERVICE

Office of Clerk and Recorder, County of Lincoln. This "corner record" was filed for record on Jan 11, 1985 was noted on the cross-index plat and is assigned page No. 2885, in book No. _____

Janet H. Sigal by Bill Sigal
County Official

Sec. 14



• - corner this sheet

INSTRUCTIONS TO SURVEYORS FOR COMPLETION OF CERTIFIED CORNER RECORDATION FORMS

I. ORIGINAL AND/OR SUBSEQUENT RECORD:

This item should describe or quote those portions of the original or subsequent record which were used in evaluating the corner position. The original record will usually be the General Land Office field notes. Subsequent record can come from several sources: Previously filed corner records, maps and plats, private and public records, etc. Some of the subsequent record, even though not in the public record, but known to have validity by the surveyor, may be quoted and appropriately noted.

The record data helps support the reestablished corner position because it clearly shows what history the surveyor based his corner position on. In some cases, however, the record may be unknown or not pertinent. A statement to that effect should appear on the corner record.

II. DESCRIPTION OF EVIDENCE FOUND OR METHOD OF LOCATING CORNER POSITION:

This item will describe the original or subsequent record evidence found. If portions of the found evidence cannot be reconciled with the record, then the disregarded record should be noted, and, if possible, an opinion as to its cause narrated.

If no physical evidence of the original or subsequent monuments and accessories can be found, then the method used to reestablish the lost or obliterated corner (single proportion, fence intersection, parol evidence, terrain calls, centerline of road, etc.) **shall** be indicated.

III. DESCRIPTION OF MONUMENTS AND ACCESSORIES SET TO PERPETUATE THE CORNER POSITION:

This item should list all details about the corner and its location which will help exclusively identify the corner position; including size and type of monument, how marked if not shown in sketch, and distinguishing topographic calls which help locate the corner. In many cases, instructions on how to find the corner should be included.

References or ties to other corners are optional and may be drawn on the face or back of the corner record form, or references to Certificate of Survey may be made. Separate drawings may be attached to the corner form.

If state plane coordinate values for the corner position are shown, then the control upon which they are based should be indicated.

IV. SKETCH OF CORNER:

This item will usually show how a found or set corner is marked and may also show topography or accessory monuments found or set and their relation to the corner. There is no stipulated format; the sketch could be transcribed field note entries.

V. CERTIFICATION:

The name and signature of the ground party chief is optional.

The Surveyor who performed or directed the field work which is depicted on the "Certified Corner Record" shall sign and affix his seal in the Certification.

The employer blank is optional, but useful in tracking down original field note data or adjacent record if, in the future, questions arise about the corner.

VI.

The Cross Index at the bottom of the page should be completed by the Surveyor. Only the single Township Index where the corner is filed shall be completed.

The lower righthand corner is a corner location diagram and should have the pertinent section filled in at the top and a closed circle indicating the appropriate corner position in the section filled in. This is intended to be an aid in searching the "Record" once it has been filed.