

## INSTRUCTIONS

1. Original and/or subsequent record used to evaluate the corner position.
2. Description of evidence found, note discrepancies in the record, state method of establishing lost or obliterated corners.
3. Description of monument and accessories set to perpetuate the corner position.
4. Sketch of corner, show all pertinent data which can best be shown in a sketch example, corner marking, topography ties, position of accessories, etc.
5. Certification must be signed and sealed by Land Surveyor registered in the State of Montana.
6. Fill in Cross Index & Section Diagram at bottom of sheet.

## CERTIFIED CORNER RECORDATION

Corner NORTHEAST CORNER SECTION 14 T. 29N R. 31W P.M.M. LINCOLN County

I. 1893 Original GLO Record: Set a post, 4 ft. long, 4 in. sq., 24 ins. in ground, for the cor. to secs. 11, 12, 13, & 14, marked notches on edges and marked four bearing trees.

1960 St. Regis Lumber Co. Survey (filed at ST. Regis Lumber Co. now Champion International Libby, Mt.) Compass and tape survey from NE cor. S14 T29N R31W to NW cor. said sec. Notes state; Found mound of rock at GLO dist. and bearing from 30 ins. pine stump, found two dead, down and rotten fir BT. and 24 ins. green PP. with grown over scars at proper GLO dist. bearing S55½°E (record S65½°E) Set "T" iron with cap at GLO dist. and bearing. From which one new BT:

P. Pine 12 ins diam. bears S4°W 21 lks. dist.

Tagged BT tags on:

Pine stump 30 ins. diam. bears S74°W 99 lks. dist.

P. Pine with scar 24 ins. diam. bears S55½°E 81 lks. dist.

1963 BLM Remonumentation: The cor. of secs. 11, 12, 13, & 14, monumented with the decayed remains of a wooden post, firmly set in the ground, and witnessed by the remains of the original bearing trees.

At the corner point, set an iron post, 30 ins. long, 2 1/2 ins. diam., 26 ins. in the ground with brass cap marked as shown, from which:

T29N R31W  
S11 | S12  
S14 | S13  
1963

The remains of the original bearing trees:

A stump, 34 ins. diam., bears N29½°E, 95 lks. dist., marks visible

T29N R31W S12 (Record: N29½°E, 97 lks. dist.)

A decayed stump, bears S25½°E, 66 lks. dist. (Record)

A decayed stump, bears S25½°W, 151 lks. dist. (Record)

A stump 20 ins. diam., bears N80°W, 114 lks. dist., marked with illegible scribing, (Record: N 78°½W, 114 lks.)

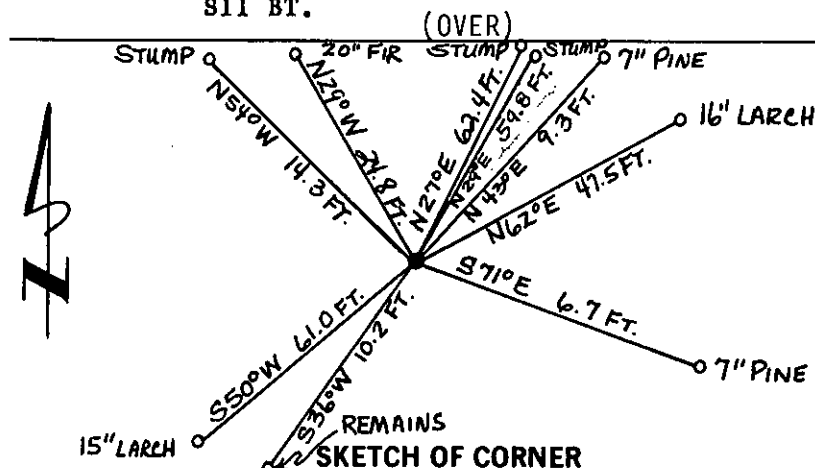
The new bearing trees:

A pine, 7 ins. diam., bears N43°E, 14 lks. dist., marked T29N R31W S13 BT.

A pine, 7 ins. diam., bears S74½°W, 10 lks. dist., marked T29N R31W S13 BT.

A pine, 6 ins. diam., bears S36½°W, 16 lks. dist., marked T29N R31W S14 BT.

A pine, 6 ins. diam., bears N 53½°W, 21 lks. dist., marked T29N R31W S11 BT.



CERTIFICATION

I, RANDY KENSE THOMAS C.  
certify the information shown herein is true and correct.

5612 S

Signature of Land Surveyor

I, THOMAS C. RAND  
certify that this Corner Record correctly represents work performed by me or under my direction in compliance with the "Corner Recordation Act" (70-22-101, et seq., M.C.A.)

Signature of Surveyor & Seal

Date: 12/28/84 Reg. No. 5612-S

Employer: U.S.D.A. FOREST SERVICE

Office of Clerk and Recorder, County of Lincoln. This "corner record" was filed for record on Jan 11, 1985 was noted on the cross-index plat and is assigned page No. 2884, in book No. \_\_\_\_\_

Graig B. Sugil by DeLooff  
County Official

Sec. 14


• - corner this sheet

# INSTRUCTIONS TO SURVEYORS FOR COMPLETION OF CERTIFIED CORNER RECORDATION FORMS

## I. ORIGINAL AND/OR SUBSEQUENT RECORD:

This item should describe or quote those portions of the original or subsequent record which were used in evaluating the corner position. The original record will usually be the General Land Office field notes. Subsequent record can come from several sources: Previously filed corner records, maps and plats, private and public records, etc. Some of the subsequent record, even though not in the public record, but known to have validity by the surveyor, may be quoted and appropriately noted.

The record data helps support the reestablished corner position because it clearly shows what history the surveyor based his corner position on. In some cases, however, the record may be unknown or not pertinent. A statement to that effect should appear on the corner record.

## II. DESCRIPTION OF EVIDENCE FOUND OR METHOD OF LOCATING CORNER POSITION:

This item will describe the original or subsequent record evidence found. If portions of the found evidence cannot be reconciled with the record, then the disregarded record should be noted, and, if possible, an opinion as to its cause narrated.

If no physical evidence of the original or subsequent monuments and accessories can be found, then the method used to reestablish the lost or obliterated corner (single proportion, fence intersection, parcel evidence, terrain calls, centerline of road, etc.) shall be indicated.

## III. DESCRIPTION OF MONUMENTS AND ACCESSORIES SET TO PERPETUATE THE CORNER POSITION:

This item should list all details about the corner and its location which will help exclusively identify the corner position; including size and type of monument, how marked if not shown in sketch, and distinguishing topographic calls which help locate the corner. In many cases, instructions on how to find the corner should be included.

References or ties to other corners are optional and may be drawn on the face or back of the corner record form, or references to Certificate of Survey may be made. Separate drawings may be attached to the corner form.

If state plane coordinate values for the corner position are shown, then the control upon which they are based should be indicated.

## IV. SKETCH OF CORNER:

This item will usually show how a found or set corner is marked and may also show topography or accessory monuments found or set and their relation to the corner. There is no stipulated format; the sketch could be transcribed field note entries.

## V. CERTIFICATION:

The name and signature of the ground party chief is optional.

The Surveyor who performed or directed the field work which is depicted on the "Certified Corner Record" shall sign and affix his seal in the Certification.

The employer blank is optional but useful in tracking down original field note data or adjacent record if, in the future, questions arise about the corner.

## VI.

The Cross Index at the bottom of the page should be completed by the Surveyor. Only the single Township Index where the corner is filed shall be completed.

The lower righthand corner is a corner location diagram and should have the pertinent section filled in at the top and a closed circle indicating the appropriate corner position in the section filled in. This is intended to be an aid in searching the "Record" once it has been filed.

- II. I found a BLM brass cap, 3 ins. above ground, and a T-bar with 1 ins. steel cap marked, "Survey Point" SE and against BLM brass cap, from which:
- A pine, 7 ins. diam., bears N43°E, 9.3 ft. dist., scribing visible (tree cut down due to forest fire).
  - A stump, 12 ins. diam., bears N29°E, 59.8 ft. dist., scribing not visible.
  - A larch stump, 30 ins. diam., bears N27°E, 62.4 ft. dist., scribing not visible.
  - A pine, 7 ins. diam., bears S71°E, 6.7 ft. dist., scribing not visible, tree broken off.
  - The burnt remains of a bearing tree bears S36°W, 10.2 ft. dist., no scribing visible.
  - A larch, 15 ins. diam., bears S50°W, 61.0 ft. dist., no visible scribe.
  - A pine stump, 6 ins. diam., bears N54°W, 14.3 ft. dist., no visible scribe.
- III. I set a 6 ft. galvanized steel guard post with a "Survey Marker" decal attached, 2 ft. North of the corner.
- I blazed and scribed two new bearing trees:
- A larch, 16 ins. diam., bears N62°E, 47.5 ft. dist., scribed T29N R31W, S12 BT.
  - A douglas fir, 20 ins. diam., bears N29°W, 24.8 ft. dist., scribed T29N R31W S11 BT.
- I painted red bands around the bearing trees and attached BT and Land Survey Monument signs.