

1. Original and/or subsequent record used to evaluate the variation
2. Description of evidence found, note discrepancies in the record, state method of establishing lost or obliterated corners
3. Description of monument and accessories set to perpetuate the corner position
4. Sketch of corner, show all pertinent data which can best be shown in a sketch example, corner marking, topography ties, position of accessories, etc.
5. Certification must be signed and sealed by Registered Land Surveyor in State of Montana
6. Fill in Cross Index & Section Diagram at bottom of sheet.

**CERTIFIED CORNER RECORDATION**

Corner CS 1/16 T. 29N R. 31W P.M.M. LINCOLN County

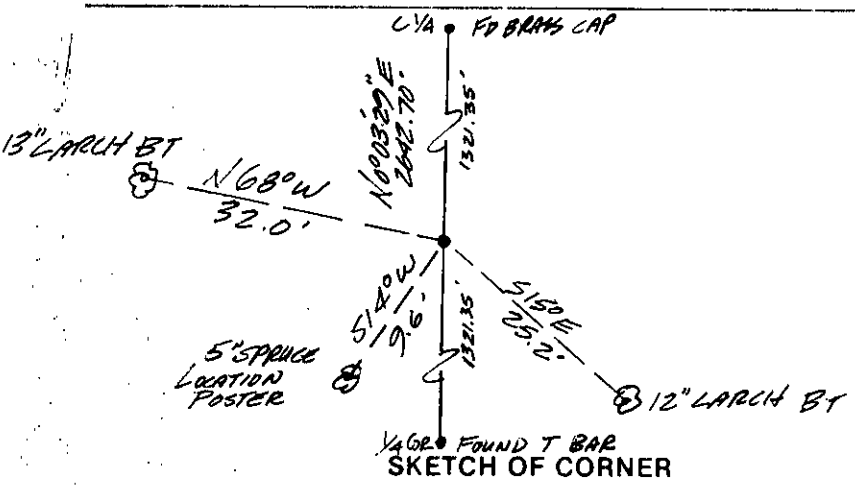
- (1) No ORIGINAL RECORD  
 (2) No EVIDENCE FOUND  
 (3) SET A 5/8" X 24" RE BAR W/PVC CAP MARKED MDL 4232-S FROM WHICH:

A 13" LARCH BEARS N68°W 32' DISTANT TO E OF TAP ROOT, SCRIBED "CS 1/16 S2 BT", AND TAGGED.

A 12" LARCH BEARS S150°E 25.2' DISTANT TO E OF TAP ROOT, SCRIBED "CS 1/16 S2 BT" AND TAGGED.

A 5" SPRUCE BEARS S14°W 9.6' DISTANT TO E OF TAP ROOT, LOCATION POSTER.

I PAINT THE BLAZES RED AND MAKE SMALL BLAZES ABOVE AND BELOW BT TAGS AND LOCATION POSTER.



CERTIFICATION

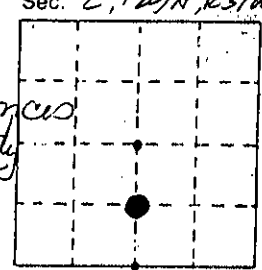
Gerald E. Bunton  
 certify the information shown herein is true and correct  
 Signature of Land Surveyor

Malvin D. Lauteren  
 certify that this Corner Record correctly represents work performed by me or under my direction in compliance with the "Corner Recordation Act" (70-22-101, et seq.)  
 Signature of Surveyor & Seal

Date: 11-29-82 Reg. No. 4232  
 Employer: KOOTENAI ENGINEERING, INC.

Office of Clerk and Recorder, County of Lincoln. This "corner record" was filed for record on the 10<sup>th</sup> day of Jan. 1983, was noted on the cross-index plat and is assigned page No 2148, in book No. Janet B. F. Siegel by Betty L. Concus County Official Deputy

Cross Index No. 29 R. 31 P.M.M.



• corner this sheet

