

# CERTIFIED CORNER RECORDATION

Corner S 1/4 S25 T. 29 N. R. 31 W. P.M.M. Lincoln County

- I. Record: 1893 GLO Record: Set a post 3 ft. long, 3 ins. square, 24 ins. in the ground, marked 1/4 on N face, set 2 Bearing trees.
- II. Found: A field search of area found a 1 1/2 inch diam. steel rod with threaded top no record.
- III. Perpetuation: At the corner point, determined by survey, set a 2 1/2 ins. diam. Aluminum pipe 24 ins. long, 22 ins. in the ground, with a 3 1/4 ins. diam. Aluminum cap marked as shown below from which:

A Grand fir, 12 ins. diam., bears S8°W, 21.90 ft. dist., scribed 1/4 S36 BT.

A Grand fir, 12 ins. diam., bears N49°W, 43.65 ft. dist., scribed 1/4 S25 BT.

A 1 1/2 ins. diam. steel rod, bears S41°E, 9.90 ft. dist.

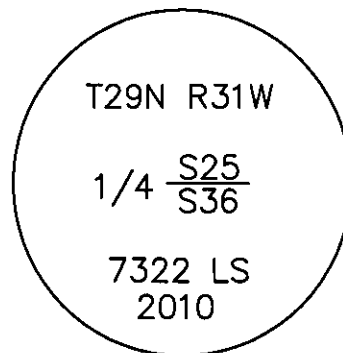
Painted faces and 6 in. wide red bands to all bearing trees and attached Land Survey Monument and Bearing Tree signs.

Set a steel post East 3.00 foot distant with attached location tag.

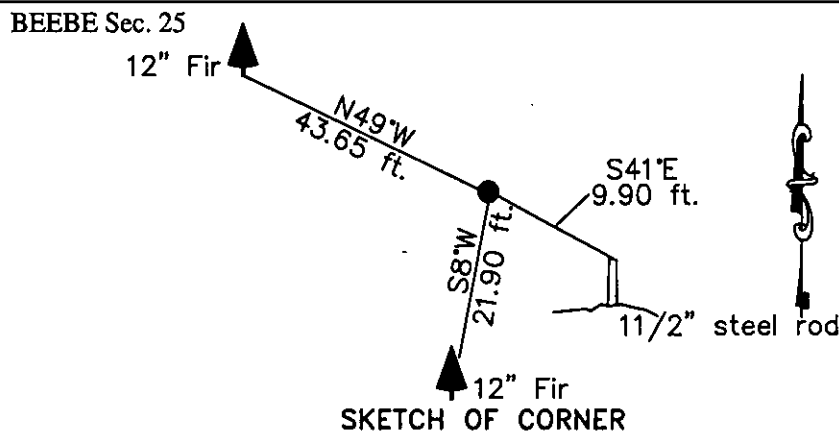
Magnetic declination: 18° East

Equipment used: Hand compass and loggers tape

NOTE: Refer to Certificate of Survey No. 4022FC  
Lincoln County Records for additional survey  
information.

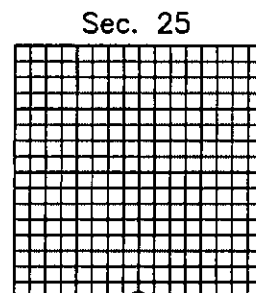


Kootenai Surveyors Inc., 314 California Av., Libby, MT. 59923 (406) 293-4354



CERTIFICATION  
I, Kelly Rooney  
certify the information shown herein is true and correct.  
Kelly Rooney  
Signature Ground Party Chief  
I, Alvah F. Hughes  
certify that this Corner Record correctly represents work  
performed by me or under my direction in compliance with  
the "Corner Recordation Act" (70-22-101, et seq., M.C.A.)  
Alvah F. Hughes  
Signature of Surveyor & Seal  
Date: 06/30/2010 Reg. No. 7322LS  
Employer: Kootenai Surveyors Inc.

Office of Clerk and Recorder, County of Lincoln This "corner  
record" was filed for recd 228817 BOOK: CCR CC&R'S PAGE: 11538 Pages: 1  
was noted on the cross- STATE OF MONTANA LINCOLN COUNTY  
book No. RECORDED: 10/04/2010 8:30 KOI: CC&R'S  
TAMMY D. LAUER CLERK AND RECORDER  
FEE: \$0.00 BY Leanne Dennis  
TO: KOOTENAI SURVEYORS INC. P.O. BOX 393, LIBBY, MT 59923



Cross Index No. V 23 T. 29N R. 31W P.M., MT  
Adopted July 1, 1981, Montana Board of Professional Engineers & Land Surveyors

• corner this sheet