

CERTIFIED CORNER RECORDATION

Corner NE 1/16 S25 T. 29 N. R. 31 W. P.M.M. Lincoln County

I. Record: None

II. Found: A field search found no monuments.

III. Perpetuation: At the corner point, determined by survey, set a 5/8 ins. diam. steel rebar 24 ins. long, 22 ins. in the ground, with a 3 1/4 ins. diam. Aluminum cap marked as shown below from which:

A Larch, 10 ins. diam., bears South, 35.65 ft. dist., scribed NE 1/16 S25 BT.

A Douglas fir, 10 ins. diam., bears S74°W, 44.40 ft. dist., scribed NE 1/16 S25 BT.

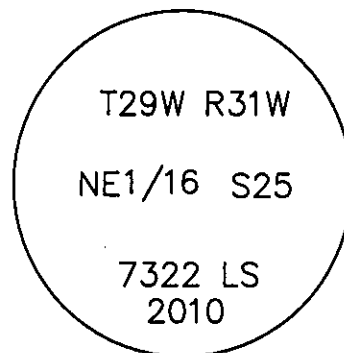
Painted faces and 6 in. wide red bands to all bearing trees and attached Land Survey Monument and Bearing Tree signs.

A set steel post bears South 3.00 ft. dist.

Magnetic declination: 18° East

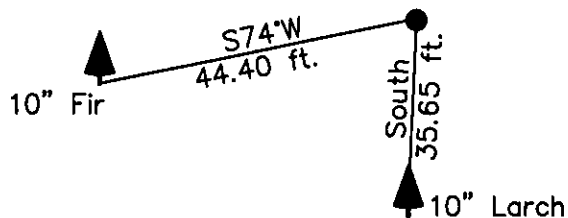
Equipment used: Hand compass and loggers tape

NOTE: Refer to Certificate of Survey No. 4022FC
Lincoln County Records for additional survey
information.



Kootenai Surveyors Inc., 314 California Av., Libby, MT. 59923 (406) 293-4354

BEEBE Sec. 25



SKETCH OF CORNER

CERTIFICATION

I, Kelly Rooney
certify the information shown herein is true and correct.
Kelly Rooney
Signature Ground Party Chief

I, Alvah F. Hughes
certify that this Corner Record correctly represents work
performed by me or under my direction in compliance with
the "Corner Recordation Act" (70-22-101, et seq., M.C.A.)
Alvah F. Hughes
Signature of Surveyor & Seal

Date: 06/30/2010 Reg. No. 7322LS

Employer: Kootenai Surveyors Inc.

Office of Clerk and Recorder, County of Lincoln This "corner

record" was file 227613 BOOK: CCR CC&R'S PAGE: 11533 Pages: 1

STATE OF MONTANA LINCOLN COUNTY

was noted on RECORDED: 08/09/2010 10:28 KOI: CC&R'S

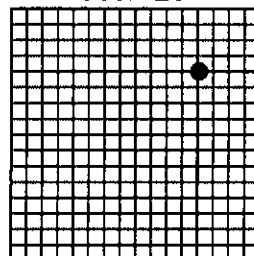
book No. TAMMY D. LAUER CLERK AND RECORDER

FEE: \$0.00

BY: Alvah F. Hughes

TO: KOOTENAI SURVEYORS INC. P.O. BOX 393, LIBBY, MT 59923

Sec. 25



Cross Index No. S 24 T. 29N R. 31W P.M., MT

Adopted July 1, 1981, Montana Board of Professional Engineers & Land Surveyors

• corner this sheet