

CERTIFIED CORNER RECORDATION

Corner C-N 1/16 S25 T. 29 N. R. 31 W. P.M.M. Lincoln County

I. Record: None

II. Found: A field search found no monuments.

III. Perpetuation: At the corner point, determined by survey, set a 5/8 ins. diam. steel rebar 24 ins. long, 22 ins. in the ground, with a 3 1/4 ins. diam. Aluminum cap marked as shown below from which:

A pine, 13 ins. diam., bears N43°E, 12.10 ft. dist., scribed C-N 1/16 S25 BT.

A pine, 25 ins. diam., bears S53°E, 55.40 ft. dist., scribed C-N 1/16 S25 BT.

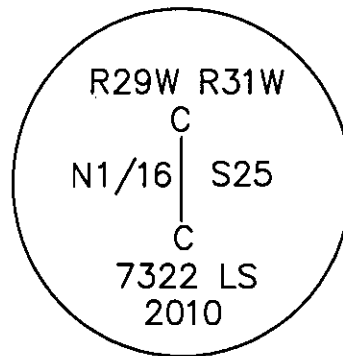
Painted faces and 6 in. wide red bands to all bearing trees and attached Land Survey Monument and Bearing Tree signs.

A steel post bears South 3.00 distant with attached location tag.

Magnetic declination: 18° East

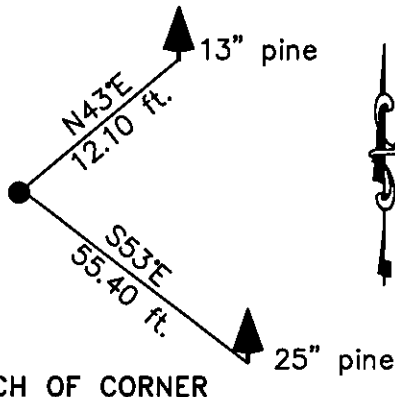
Equipment used: Hand compass and loggers tape

NOTE: Refer to Certificate of Survey No. 4022FC
Lincoln County Records for additional survey
information.



Kootenai Surveyors Inc., 314 California Av., Libby, MT. 59923 (406) 293-4354

BEEBE Sec. 25



SKETCH OF CORNER

CERTIFICATION

I, Kelly Rooney
certify the information shown herein is true and correct.
Kelly Rooney
Signature Ground Party Chief

I, Alvah F. Hughes
certify that this Corner Record correctly represents work
performed by me or under my direction in accordance with
the "Corner Recordation Act" (70-22-101, et seq., M.C.A.).
Alvah F. Hughes
Signature of Surveyor & Seal

Date: 06/30/2010 Reg. No. 7322LS
Employer: Kootenai Surveyors Inc.

Office of Clerk and Recorder, County of Lincoln This "corner

record" was 227612 BOOK: CCR CC&R'S PAGE: 11532 Pages: 1

STATE OF MONTANA LINCOLN COUNTY

was noted RECORDED: 08/09/2010 10:28 KOI: CC&R'S in

book No. TAMMY D. LAUER CLERK AND RECORDER

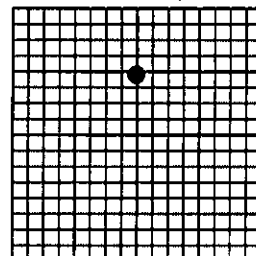
FEE: \$0.00 BY Julie Blomdall, Deputy

TO: KOOTENAI SURVEYORS INC. P.O. BOX 393, LIBBY, MT 59923

Cross Index No. S 23 T. 29N R. 31W P.M., MT

Adopted July 1, 1981, Montana Board of Professional Engineers & Land Surveyors

Sec. 25



• corner this sheet