

CERTIFIED CORNER RECORDATION

Corner C 1/4 S25 T 29 N. R. 31 W. P.M.M. Lincoln County

- I. Record: None
- II. Found: A field search found no monuments.
- III. Perpetuation: At the corner point, determined by survey, set a 2 1/2 ins. diam.
Aluminum pipe 24 ins. long, 22 ins. in the ground, with a 3 1/4 ins. diam.
Aluminum cap marked as shown below from which:

A Larch, 17 ins. diam., bears S42°W, 65.80 ft. dist., scribed C 1/4 S25 BT.

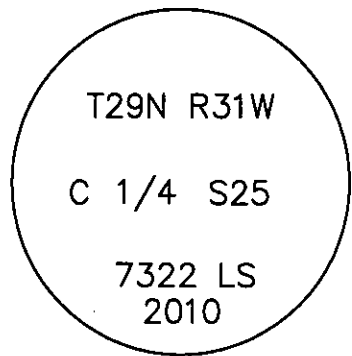
A Larch, 9 ins. diam., bears N46°W, 40.60 ft. dist., scribed C 1/4 S25 BT.

Painted faces and 6 in. wide red bands to all bearing trees and attached Land Survey Monument and Bearing Tree signs.

Magnetic declination: 18° East

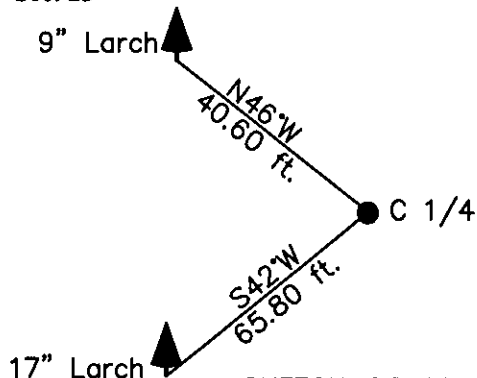
Equipment used: Hand compass and loggers tape

NOTE: Refer to Certificate of Survey No. 4022FC
Lincoln County Records for additional survey
information.



Kootenai Surveyors Inc., 314 California Av., Libby, MT. 59923 (406) 293-4354

BEEBE Sec. 25



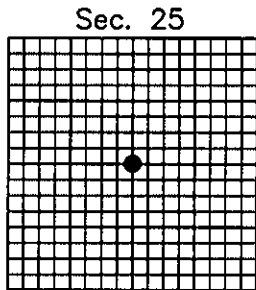
SKETCH OF CORNER

CERTIFICATION

I, Kelly Rooney
certify the information shown herein is true and correct.
Kelly Rooney
Signature Ground Party Chief

I, Alvah F. Hughes
certify that this Corner Record correctly represents work
performed by me or under my direction in compliance with
the "Corner Recordation Act" (70-22-101, et seq. M.C.A.)
Alvah F. Hughes
Signature of Surveyor & Seal
Date: 06/30/2010 Reg. No. 7322LS
Employer: Kootenai Surveyors Inc.

Office of Clerk and Recorder, County of Lincoln This "corner
record" 227611 BOOK: CCR CC&R'S PAGE: 11531 Pages: 1
STATE OF MONTANA LINCOLN COUNTY
was not RECORDED: 08/09/2010 10:27 KOI: CC&R'S
TAMMY D. LAUER CLERK AND RECORDER
book No FEE: \$0.00 BY Alvah F. Hughes
TO: KOOTENAI SURVEYORS INC. P.O. BOX 393, LIBBY, MT 59923



• corner this sheet

Cross Index No. T 23 T. 29N R. 31W P.M., MT
Adopted July 1, 1981, Montana Board of Professional Engineers & Land Surveyors