

CERTIFIED CORNER RECORDATION

Corner S 1/4 S25 T 29 N. R. 31 W. P.M.M. Lincoln County

- I. Record: 1893 GLO Record: Set a post 3 ft. long, 3 ins. square, 24 ins. in the ground, marked 1/4 on N face, set 2 Bearing trees.
- II. Found: A field search of area found a 1 1/2 inch diam. steel rod with threaded top no record.
- III. Perpetuation: At the corner point, determined by survey, set a 2 1/2 ins. diam. Aluminum pipe 24 ins. long, 22 ins. in the ground, with a 3 1/4 ins. diam. Aluminum cap marked as shown below from which:

A Grand fir, 12 ins. diam., bears S8°W, 21.90 ft. dist., scribed 1/4 S36 BT.

A Grand fir, 12 ins. diam., bears N49°W, 43.65 ft. dist., scribed 1/4 S25 BT.

A 1 1/2 ins. diam. steel rod, bears S41°E, 9.90 ft. dist.

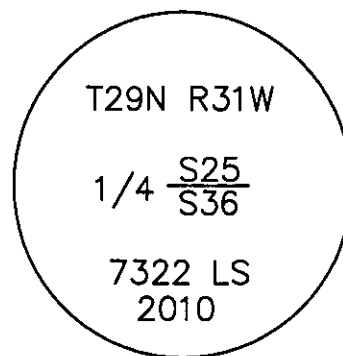
Painted faces and 6 in. wide red bands to all bearing trees and attached Land Survey Monument and Bearing Tree signs.

Set a steel post East 3.00 foot distant with attached location tag.

Magnetic declination: 18° East

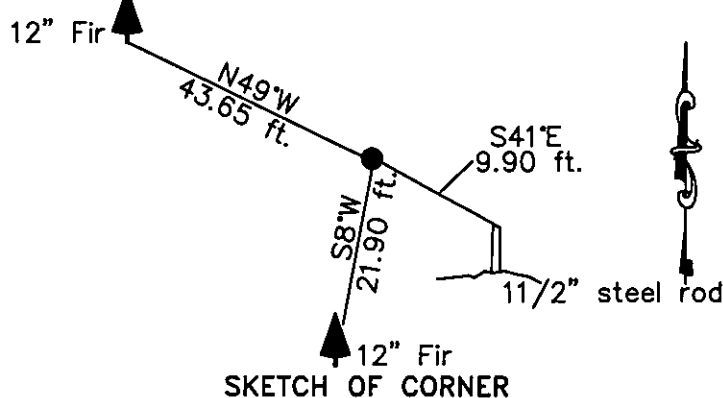
Equipment used: Hand compass and loggers tape

NOTE: Refer to Certificate of Survey No. 4022FC
Lincoln County Records for additional survey
information.



Kootenai Surveyors Inc., 314 California Av., Libby, MT. 59923 (406) 293-4354

BEEBE Sec. 25



CERTIFICATION

I, Kelly Rooney
certify the information shown herein is true and correct.
Kelly Rooney
Signature Ground Party Chief

I, Alvah F. Hughes
certify that this Corner Record correctly represents the work
performed by me or under my direction in compliance with
the "Corner Recordation Act" (70-22-101, et seq. M.C.A.)
Alvah F. Hughes
Signature of Surveyor & Seal

Date: 06/30/2010 Reg. No. 7322LS
Employer: Kootenai Surveyors Inc.

Office of Clerk and Recorder, County of Lincoln This "corner
record" was filed 227610 BOOK: CCR CC&R'S PAGE: 11530 Pages: 1
STATE OF MONTANA LINCOLN COUNTY
was noted on the RECORDED: 08/09/2010 10:26 KOI: CC&R'S
book No. TAMMY D. LAUER CLERK AND RECORDER
FEE: \$0.00 BY: Dee Blomdell, Deputy
TO: KOOTENAI SURVEYORS INC. P.O. BOX 393, LIBBY, MT 59923

Cross Index No. V R 23 T. 29N R. 31W P.M., MT

Adopted July 1, 1981, Montana Board of Professional Engineers & Land Surveyors

