

CERTIFIED CORNER RECORDATION

Corner S 1/4 cor. of Sec. 21 T 29 N. R. 31 W. P.M.M. LINCOLN County

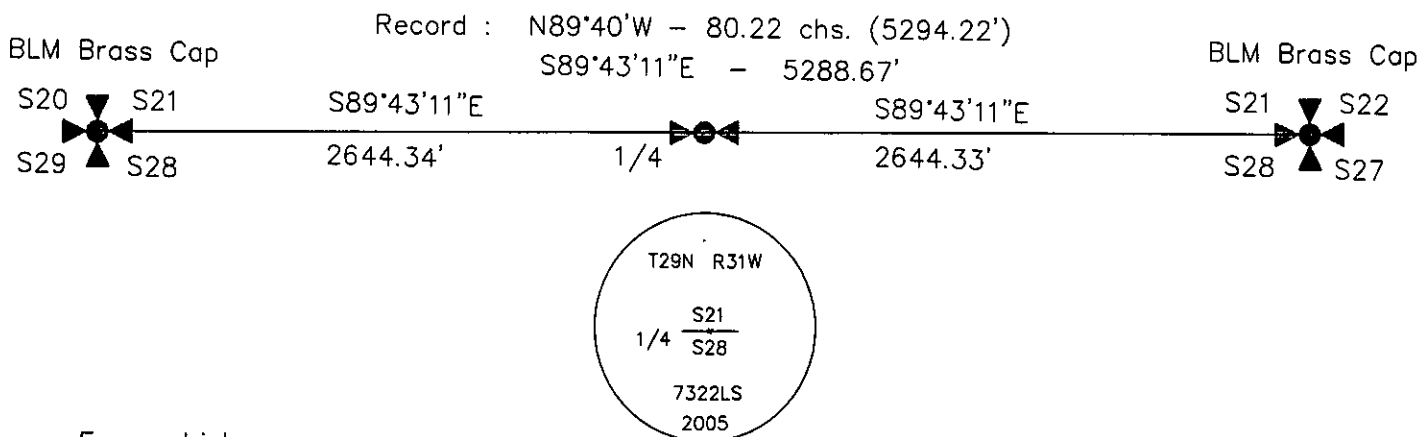
I. Record: 1893 GLO survey by Mumbrue: Set a post 3 ft. long, 3 ins. square, 24 ins. in the ground from which:

- A pine, 24 ins. diam., bears S.5 3/4"E., 38 lks. dist. (25.08 ft.).
- A pine, 30 ins. diam., bears S.65"W., 59 lks. dist. (38.94 ft.).

1963 - BLM Remon: Set a 3 1/4 in. diam. brass cap determined from the remains of the original bearing trees.

II. Found: None. Corner and all accessories lost or obliterated by machine fire lines.

III. Perpetuation: At a computed point determined from survey, set a 2 1/2" diam. x 30" long aluminum pipe with a 3 1/4" diam. U.S. Forest Service aluminum cap marked as shown:



From which:

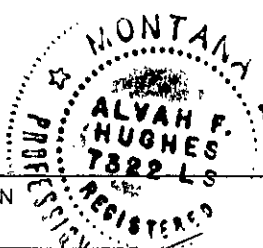
- A fir, 5 1/2 ins. diam., bears S.9"W., 12.30 ft. dist. scribed 1/4 S21 BT.
- A fir, 5 1/2 ins. diam., bears N.70° W., 19.50 ft. dist. scribed 1/4 S28 BT.

Painted 6 in. wide red bands around all Bearing trees and attached Bearing tree and Land Survey Monument signs.

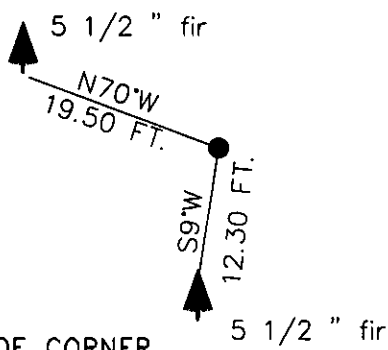
Set a 6 ft. galvanized steel post 3 ft. west of corner and attached LSM and Property Boundary decals.

Magnetic declination: 18° East
Equipment used: Hand compass and loggers tape

Kootenai Surveyors Inc., 314 California Av., Libby, MT. 59923 (406) 293-4354



Little Hoodoo - PCTC



SKETCH OF CORNER

CERTIFICATION
I, Kenneth R. Kern
certify the information shown herein is true and correct.

Kenneth R. Kern
Signature Ground Party Chief

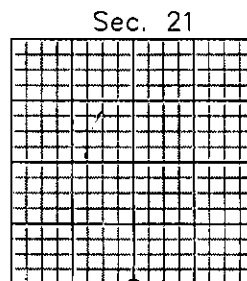
I, Alvah F. Hughes
certify that this Corner Record correctly represents work performed by me or under my direction in compliance with the "Corner Recordation Act" (70-22-101, et seq., M.C.A.)

Alvah F. Hughes
Signature of Surveyor & Seal

Date: 6/23/2005 Reg. No. 7322-LS

Employer: Kootenai Surveyors Inc.

Office of Clerk and Recorder Lincoln
185978 BOOK: CCR CC&R'S PAGE: 10818 Pages: 1
record" was filed for re STATE OF MONTANA LINCOLN COUNTY
was noted on the cross RECORDED: 07/14/2005 12:25 KOI: CC&R'S
book No. CORAL M. CUMMINGS CLERK AND RECORDER
TO: FILED FEE: \$0.00 BY: *Coral M. Cummings*
County Official



Cross Index No. R 11 T. 29N. R. 31W. P.M., MT