

# CERTIFIED CORNER RECORDATION

CORNER NE-NE-NW 1/256 T. 29 N., R. 31 W., P.M.M. LINCOLN COUNTY  
Cor. Sec. 1

RECORD:  
NONE

FOUND EVIDENCE:  
NONE

## PERPETUATION:

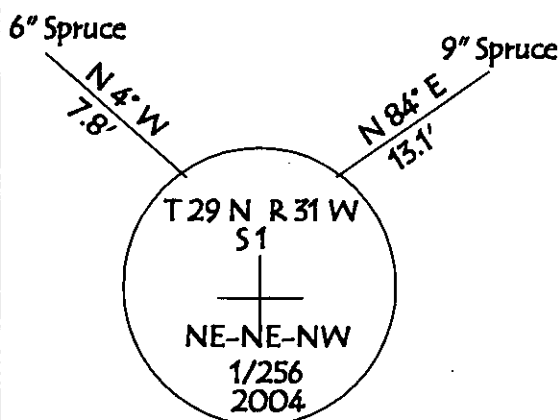
SET A 3 1/4 INCH ALUMINUM CAP STAMPED (SEE DIAGRAM BELOW) ON A 5/8 INCH DIA. REBAR 20 INCHES LONG FROM WHICH

A 6 INCH DBH SPRUCE SCRIBED X BT. BEARS N 4° W 7.8 FEET.

A 9 INCH DBH SPRUCE SCRIBED NE-NE-NW 1/256 S 1 BT. BEARS N 84° E 13.1 FEET.

PAINTED 6 INCH WIDE BANDS AND ATTACHED BEARING TREE SIGNS TO TREES.

MAGNETIC DECLINATION: 18° E



## CERTIFICATION

I, GEORGE CLARK

Certify the information shown herein is true and correct

Signature of Ground Party Chief

I, KENNETH E. DAVIS

certify that this Corner Record correctly represents work performed by me or under my direction in compliance with the "Corner Recordation Act"

(70-22-101, et seq., M.C.A.)

Signature of Surveyor & Seal

Date: 11/16/2004 Reg. No. 4975-S

Employer: Surveying Inc

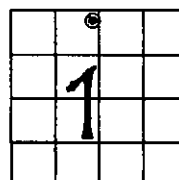
## SKETCH OF CORNER

O. 180698 BOOK: CCR CC&R'S PAGE: 10707 Pages: 1  
T. STATE OF MONTANA LINCOLN COUNTY  
W. RECORDED: 11/16/2004 1:40 KOI: CC&R'S  
N. CORAL M. CUMMINGS CLERK AND RECORDER  
In. FEE: \$0.00 BY: Deannio L. Lerner  
TO: FILED Deputy

10707

County Official

## SECTION



Cross Index No. NE-NE-NW 1/256 Cor. Sec. 1 T. 29 N., R. 31 W., P.M.M.

THIS CORNER