

# CERTIFIED CORNER RECORDATION

CORNER SE-SE-NW 1/256 T. 29 N., R. 31 W., P.M.M. LINCOLN COUNTY  
Cor. Sec. 1

RECORD:  
NONE

FOUND EVIDENCE:  
NONE

## PERPETUATION:

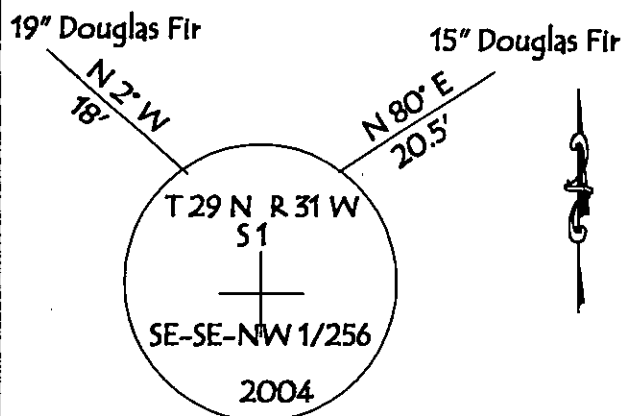
SET A 3 1/4 INCH ALUMINUM CAP STAMPED (SEE DIAGRAM BELOW) ON A 5/8 INCH DIA. REBAR 20 INCHES LONG. FROM WHICH

A 19 INCH DBH DOUGLAS FIR SCRIBED SE-SE-NW S 1 1/256 BT. BEARS N 2° W 18 FEET.

A 15 INCH DBH DOUGLAS FIR SCRIBED SE-SE-NW S 1 1/256 BT. BEARS N 80° E 20.5 FEET.

PAINTED 6 INCH WIDE BANDS AND ATTACHED BEARING TREE SIGNS TO TREES.

MAGNETIC DECLINATION: 18° E



## CERTIFICATION

I, GEORGE CLARK

Certify the information shown herein is true and correct

Signature of Ground Party Chief

I, KENNETH E. DAVIS

certify that this Corner Record correctly represents work performed by me or under my direction in compliance with the Corner Recordation Act

(70-28101, revised, M.C.A.)

Signature of Surveyor & Seal

Surveyor's License No. 4975-S

Employer: DAVIS Surveying Inc.

## SKETCH OF CORNER

Office of Clerk and Recorder, County of Lincoln

180469 BOOK: CCR CC&R'S PAGE: 10692 Pages: 1

STATE OF MONTANA LINCOLN COUNTY

RECORDED: 11/08/2004 10:30 KOI: CC&R'S

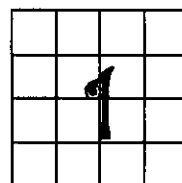
CORAL M. CUMMINGS CLERK AND RECORDER

FEE: \$0.00

BY: *Debbie Deputy*

TO: DAVIS SURVEYING, INC. P.O. BOX 896, TROY, MONTANA 59935

## SECTION



Cross Index No. SE-SE-NW 1/256 Cor. Sec. 1

T. 29 N., R. 31 W., P.M.M.

THIS CORNER