

INSTRUCTIONS

1. Original and/or subsequent record used to evaluate the corner position.
2. Description of evidence found, note discrepancies in the record, state method of establishing lost or obliterated corners.
3. Description of monument and accessories set to perpetuate the corner position.
4. Sketch of corner, show all pertinent data which can best be shown in a sketch example, corner marking, topography ties, position of accessories, etc.
5. Certification must be signed and sealed by Land Surveyor registered in the State of Montana.
6. Fill in Cross Index & Section Diagram at bottom of sheet.

CERTIFIED CORNER RECORDATION

Corner W 1/16 of Sec. 18 T. 29 N. R. 30 W. P.M.M. Lincoln County

I. 1972, recordation exhibit by P. Sargent, Reg. No. 2235-S, set an iron pipe.

1984, Certified Corner Recordation by Thomas C. Hill, Reg. No. 5612-S: "I found a 1 3/4 ins. iron pipe, within acceptable positional tolerance, with a 2 ins. brass cap, 1 ins. above ground, marked as shown

T29N R30W
S18
1/16
S19
2235S

from which

A 22 ins. diam. ponderosa pine, bears $N05^{\circ}W$, 46.6 ft. distance, scribing not visible, healed face. (no record)

A 14 ins. diam., douglas fir, bears $S68^{\circ}E$, 40.4 ft. distance, scribing not visible, healed face. (no record)"

II. Found a 2 in. diam. brass cap on iron pipe, flush with ground, cap marked as shown above, from which:

A pine, 26 ins. diam., bears $S7^{\circ}E$ (record: $N5^{\circ}W$), 46.5 ft. dist., healed face.

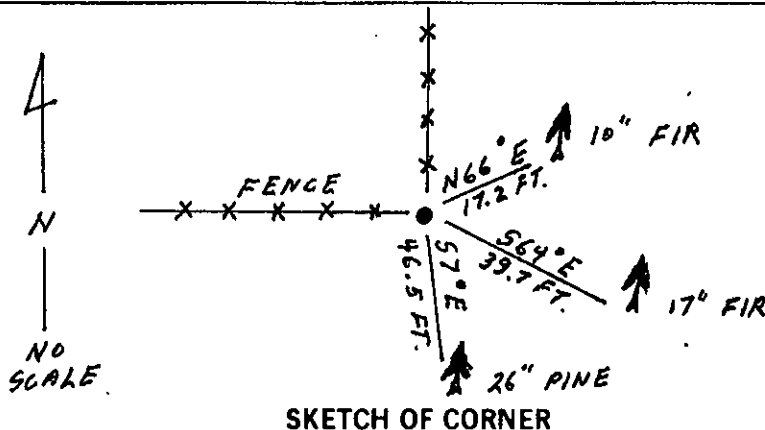
A fir, 17 ins. diam., bears $S64^{\circ}E$, 39.7 ft. dist., healed face.

III. Established one new bearing tree, the Southeast bearing tree will be destroyed by a road:

A fir, 10 ins. diam., bears $N66^{\circ}E$, 17.2 ft. dist., mkd. W 1/16 S18 BT.

Painted a red band around bearing trees and attached Land Survey Monument and Bearing Tree signs.

Magnetic Declination 20° East



SKETCH OF CORNER

CERTIFICATION

I. Gary C. Crismon

certify the information shown herein is true and correct.

Gary C. Crismon
Signature Ground Party Chief

I. Ronald A. Pearson

certify that this Corner Record correctly represents work performed by me or under my direction in compliance with the "Corner Recordation Act" (70-22-101, et seq., M.C.A.)

Ronald A. Pearson
Signature of Surveyor & Seal

Date: 3/16/94 Reg. No. 90081S

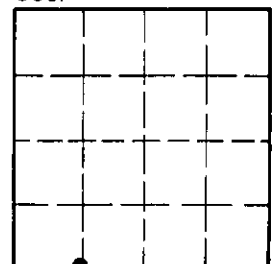
Employer: U.S. FOREST SERVICE

Office of Clerk and Recorder, County of Lincoln. This "corner record" was filed for record on April 6, 1994 was noted on the cross-index plat and is assigned page No. 6223, in book No. Coral M. Cunningham By RS

County Official

Cross Index No. N-2 T. 29 N R. 30 W PMM

Sec. 18



• - corner this sheet