

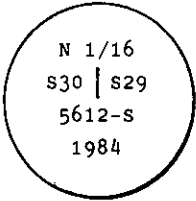
**INSTRUCTIONS**

1. Original and/or subsequent record used to evaluate the corner position.
2. Description of evidence found, note discrepancies in the record, state method of establishing lost or obliterated corners.
3. Description of monument and accessories set to perpetuate the corner position.
4. Sketch of corner, show all pertinent data which can best be shown in a sketch example, corner marking, topography ties, position of accessories, etc.
5. Certification must be signed and sealed by Land Surveyor registered in the State of Montana.
6. Fill in Cross Index & Section Diagram at bottom of sheet.

**CERTIFIED CORNER RECORDATION**

Corner N 1/16 Secs. 29 & 30 T. 29 N. R. 30 W. P.M.M. Lincoln County

I. 1985 Recordation by Thomas C. Hill, Reg. #5612S: "At the determined corner position, set an aluminum rod, 3/4 ins. diam., 30 ins. long, 30 ins. in ground, with an aluminum cap marked:



from which the following references:

- larch, 15 ins. diam., bears  $S75^{\circ}E$ , 11.4 ft. dist., mkd. N 1/16 S29 BT.
- pine, 13 ins. diam., bears  $N35^{\circ}W$ , 21.6 ft. dist., mkd. N 1/16 S30 BT.

Set a guard post, with a "Survey Marker" decal attached, 2 ft. N. from corner.  
Painted a red band around each bearing tree and attached "Attention" and "Bearing Tree" signs where needed."

II. Found a 3 1/4 ins. diam., U.S.D.A. Forest Service, aluminum cap flush with ground, marked as shown above, from which

- A larch, 15 ins. diam., bears  $S75^{\circ}E$ , 11.4 ft. dist., visible scribe.
- A pine stump, 13 ins. diam., bears  $N35^{\circ}W$ , 21.6 ft. dist., visible scribe.

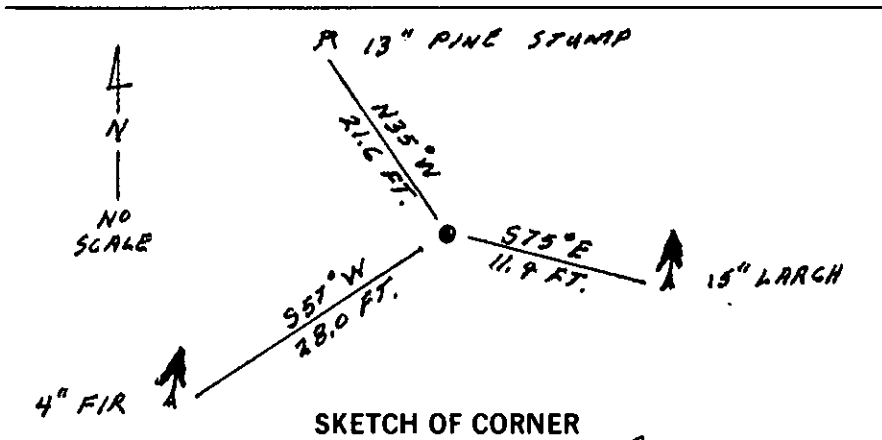
Guard post, bears North, 2 ft. dist.

III. Establish one new bearing tree:

- A fir, 4 ins. diam., bears  $S57^{\circ}W$ , 28.0 ft. dist., mkd. X BT.

Painted red bands around the bearing trees and attached Land Survey Monument and Bearing Tree signs.

Magnetic declination:  $20^{\circ}$  East



**CERTIFICATION**

I. Thomas M. Hommel  
certify the information shown herein is true and correct.  
*Thomas M. Hommel*  
Signature Ground Party Chief

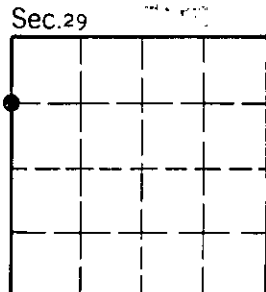
II. Alvah F. Hughes  
certify that this Corner Record correctly represents work performed by me or under my direction in compliance with the "Corner Recordation Act" (70-22-101, et seq., M.C.A.)  
*Alvah F. Hughes*  
Signature of Surveyor & Seal

Date: 12/31/92 Reg. No. 7322LS

Employer: U.S. FOREST SERVICE

Office of Clerk and Recorder, County of Lincoln. This "corner record" was filed for record on Jan 11, 1993 was noted on the cross-index plat and is assigned page No. 5282, in book No. \_\_\_\_\_

*Coral M. Cummins, L.S.*  
County Official



Cross Index No. S-05 T. 29 N. R. 30 W. P.M.M.

• - corner this sheet