

INSTRUCTIONS

1. Original and/or subsequent record used to evaluate the corner position.
2. Description of evidence found, note discrepancies in the record, state method of establishing lost or obliterated corners.
3. Description of monument and accessories set to perpetuate the corner position.
4. Sketch of corner, show all pertinent data which can best be shown in a sketch example, corner marking, topography ties, position of accessories, etc.
5. Certification must be signed and sealed by Land Surveyor registered in the State of Montana.
6. Fill in Cross Index & Section Diagram at bottom of sheet.

CERTIFIED CORNER RECORDATION

Corner 1/4 Cor. of Secs. 14 & 23 T. 29 N. R. 30 W. P.M.M. Lincoln County

- I. 1898 G.L.O. record by Paul S. A. Bickel: "Set a slate stone 20x14x4 ins., 15 ins. in the ground, for 1/4 Sec. Cor., marked 1/4 on N face, from which

A fir, 14 ins. diam., bears N22°45'W, 25 lks. dist., marked 1-4 S14 BT.

A tamarack, 28 ins. diam., bears S70°20'W, 6 lks. dist., marked 1-4 S23 BT.

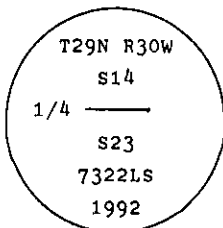
- II. Found a firmly set stone 11x6 ins., 7 ins. above ground, mkd. 4 on N. face, from which

A fir, 22 ins. diam., bears N20°W, 22.1 ft. (25 lks.) dist., healed face.

A tamarack stump, 28 ins. diam., bears S75°W, 4.0 ft. (6 lks.) dist., mkd. 4.

(Record: S70°20'W, 6 lks.)

- III. Set a 2 1/2 ins. diam. aluminum pipe, 30 ins. long, 19 ins. in the ground with 3 1/4 ins. diam., U.S.D.A., Forest Service aluminum cap marked as shown:



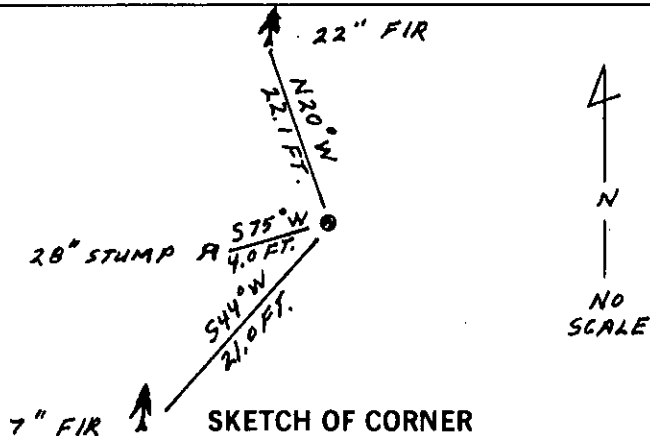
Establish one new bearing tree:

A fir, 7 ins. diam., bears S44°W, 21.0 ft. dist., mkd. 1/4 S23 BT.

Painted red bands around the bearing trees and attached Land Survey Monument and Bearing Tree signs.

Bury original stone alongside aluminum monument and build collar of stone around pipe monument.

Magnetic Declination: 20° East



CERTIFICATION

I, Mark A. Federman
certify the information shown herein is true and correct.

Signature Ground Party Chief

I, Alvah F. Hughes
certify that this Corner Record correctly represents work performed by me or under my direction in compliance with the "Corner Recordation Act" (70-22-101, et seq., M.C.A.)

Alvah F. Hughes
Signature of Surveyor & Seal

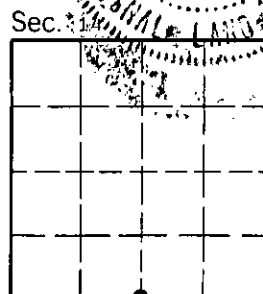
Date: 12/11/92 Reg. No. 7322 LS

Employer: U.S. FOREST SERVICE

Office of Clerk and Recorder, County of Lincoln. This "corner record" was filed for record on 1-4-93 was noted on the cross-index plat and is assigned page No. 5256, in book No. Corral M Cunningham by B.B.

County Official

Cross Index No. N-19 T. 29 N R. 30 W PMM



• - corner this sheet