

INSTRUCTIONS

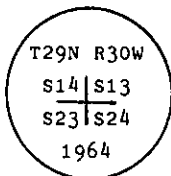
1. Original and/or subsequent record used to evaluate the corner position.
2. Description of evidence found, note discrepancies in the record, state method of establishing lost or obliterated corners.
3. Description of monument and accessories set to perpetuate the corner position.
4. Sketch of corner, show all pertinent data which can best be shown in a sketch example, corner marking, topography ties, position of accessories, etc.
5. Certification must be signed and sealed by Land Surveyor registered in the State of Montana.
6. Fill in Cross Index & Section Diagram at bottom of sheet.

CERTIFIED CORNER RECORDATION

Corner of Secs. 13, 14, 23 & 24 T. 29 N., R. 30 W., P.M.M. Lincoln County

I. 1898 G.L.O. record by Paul S. A. Bickel: Set a stone monument and four bearing trees.

1964 B.L.M. Remonumentation by Gerald F. Pittman et al: "The cor. of secs. 13, 14, 23 and 24, monumented with a slate stone, 16 x 8 x 6 ins., firmly set and mkd. with 1 groove on the E. and 3 grooves on the S. faces and witnessed by the remains of three of the original bearing trees. At the corner point: set an iron post, 30 ins. long, 2 1/2 ins. diam., 27 ins. in the ground, with brass cap mkd.



from which

The remains of the original bearing trees:

- A pine, 14 ins. diam., bears N69 1/2° E, 42 lks. dist., mkd. with an overgrown blaze. (Record: N69 35'E, 42 lks.)
- A stump hole, bears S20° W, 9 lks. dist. (Record)
- A pine, 16 ins. diam., bears N43 1/2° W, 62 lks. dist., mkd. with an overgrown blaze. (Record)

The new bearing trees:

- A fir, 6 ins. diam., bears S75° E, 68 lks. dist., mkd. T29N R30W S24 BT.
- A fir, 8 ins. diam., bears S66 1/2° W, 71 lks. dist., mkd. T29N R30W S23 BT.

Bury the original stone alongside of the iron post."

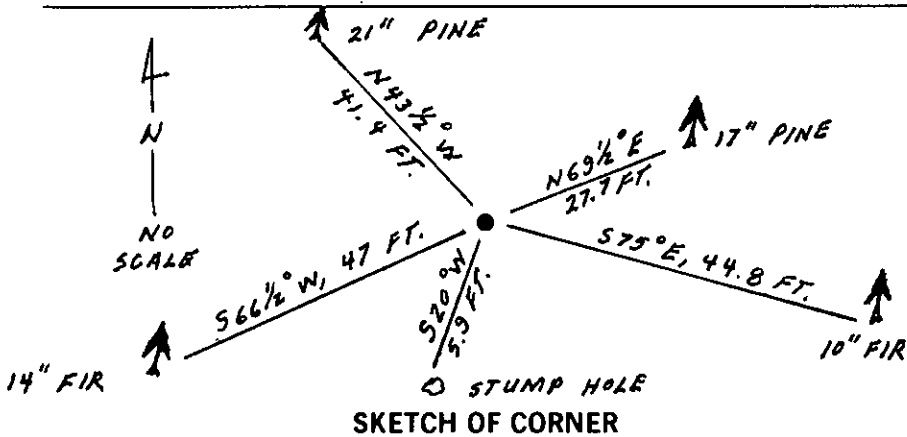
II. Found an iron pipe, 2 1/2 ins. diam., 5 ins. above the ground with 3 1/4 ins. diam., B.L.M. brass cap marked as shown above, from which

- A pine, 17 ins. diam., bears N69 1/2° E, 27.7 ft. (42 lks.) dist., healed face.
- A stump hole, bears S20° W, 5.9 ft. (9 lks.) dist.
- A pine, 21 ins. diam., bears N43 1/2° W, 41.4 ft. (63 lks.) dist., healed face.
- A fir, 10 ins. diam., bears S75° E, 44.8 ft. (68 lks.) dist., healed face.
- A fir, 14 ins. diam., bears S66 1/2° W, 47 ft. (71 lks.) dist., visible scribe.

III. Painted red bands around the bearing trees and attached Land Survey Monument and Bearing Tree signs and raise a small mound of stone around iron pipe monument.

Guard post not set.

Magnetic Declination: 20° East



CERTIFICATION

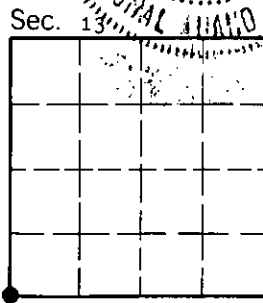
I, Mark A. Federman
certify the information shown herein is true and correct.

Signature Ground Party Chief

I, Alvah F. Hughes
certify that this Corner Record correctly represents work performed by me or under my direction in compliance with the "Corner Recordation Act" (70-22-101, et seq., M.C.A.)

Alvah F. Hughes
Signature of Surveyor & Seal HUGHES
Date: 12/11/92 Reg. No. 7322, LS 78822 LS
Employer: U.S. FOREST SERVICE

Office of Clerk and Recorder, County of Lincoln. This "corner record" was filed for record on 1-4-93 was noted on the cross-index plat and is assigned page No. 5254, in book No. _____
Coral M. Cummings by BSB
County Official



Cross Index No. N-21 T. 29 N R. 30 W P.M.M.

• - corner this sheet