

INSTRUCTIONS

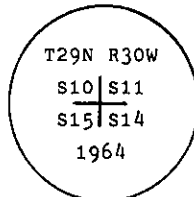
1. Original and/or subsequent record used to evaluate the corner position.
2. Description of evidence found, note discrepancies in the record, state method of establishing lost or obliterated corners.
3. Description of monument and accessories set to perpetuate the corner position.
4. Sketch of corner, show all pertinent data which can best be shown in a sketch example, corner marking, topography ties, position of accessories, etc.
5. Certification must be signed and sealed by Land Surveyor registered in the State of Montana.
6. Fill in Cross Index & Section Diagram at bottom of sheet.

CERTIFIED CORNER RECORDATION

Corner of Secs. 10, 11, 14 & 15 T. 29 N., R. 30 W., P.M.M., Lincoln County

- I. 1898 G.L.O. record by Paul S. A. Bickel: Set a stone monument and four bearing trees.

1964 B.L.M. Remonumentation by Gerald F. Pittman et al: "The cor. of secs. 10, 11, 14 and 15, monumented with a slate stone, 24 x 6 x 4 ins., firmly set and mkd. with 2 grooves on the E. and 4 grooves on the S. faces, and witnessed by the remains of three of the original bearing trees. At the corner point; set an iron post, 30 ins. long, 2 1/2 ins. diam., 27 ins. in the ground, with brass cap mkd.



from which

The remains of the original bearing trees:

A stump, 26 ins. diam., bears N65° E, 53 lks. dist., visible marks BT.
(Record: N65° 05' E, 53 lks.)

A stump, 24 ins. diam., bears S37° E, 13 lks. dist. (Record: S36° 50' E, 13 lks.)

A stump, 22 ins. diam., bears S65 1/2° W, 55 lks. dist. (Record)

The new bearing tree:

A pine, 12 ins. diam., bears N80° E, 74 lks. dist., mkd. T29N R30W S11 BT.

A pine, 10 ins. diam., bears S68 1/2° E, 100 lks. dist., mkd. T29N R30W S14 BT.

A fir, 5 ins. diam., bears S19° W, 53 lks. dist., mkd. T29N R30W S15 BT.

A pine, 16 ins. diam., bears N47° W, 83 lks. dis., mkd. T29N R30W S10 BT.

Bury the original stone alongside of the iron post."

- II. Found an iron pipe, 2 1/2 ins. diam., 6 ins. above the ground in mound of stone with 3 1/4 ins. diam., B.L.M. brass cap marked as shown above, from which

A stump, 26 ins. diam., bears N65° E, 35 ft. (53 lks.) dist., mkd. BT.

A stump, 24 ins. diam., bears S37° E, 8.6 ft. (13 lks.) dist., no visible scribe.

A pine, 19 ins. diam., bears N80° E, 48.9 ft. (74 lks.) dist., healed face.

A pine, 10 ins. diam., bears S68 1/2° E, 66.0 ft. (100 lks.) dist., healed face.

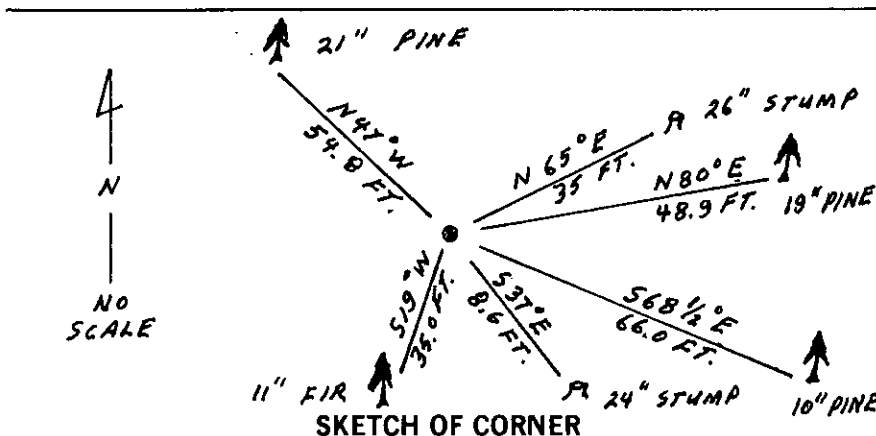
A fir, 11 ins. diam., bears S19° W, 35.0 ft. (53 lks.) dist., healed face.

A pine, 21 ins. diam., bears N47° W, 54.8 ft. (83 lks.) dis., visible scribe.

- III. Painted red bands around the bearing trees and attached Land Survey Monument and Bearing Tree signs.

Set a 6 ft. galvanized steel guard post with Land Survey Marker and Property Boundary decals, West, 4.7 ft.

Magnetic Declination: 20° East



CERTIFICATION

Mark A. Federman

I, certify the information shown herein is true and correct.

Signature Ground Party Chief

Alvah F. Hughes

I, certify that this Corner Record correctly represents work performed by me or under my direction in compliance with the "Corner Recordation Act" (70-22-101, et seq., M.C.A.)

Signature of Surveyor & Seal
Date: 12/11/92 Reg. No. 7322 LS

Employer: U.S. FOREST SERVICE
REGISTERED

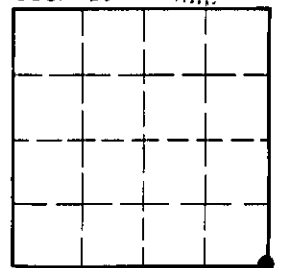
Office of Clerk and Recorder, County of Lincoln. This "corner record" was filed for record on 1-4-93

was noted on the cross-index plat and is assigned page No. 5252, in book No. Coral M. Cummings by 125

County Official

Cross Index No. J-17 T. 29 N. R. 30 W. PMM

Sec. 10



• corner this sheet