

INSTRUCTIONS

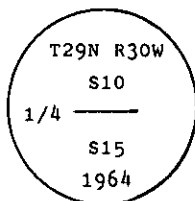
1. Original and/or subsequent record used to evaluate the corner position.
2. Description of evidence found, note discrepancies in the record, state method of establishing lost or obliterated corners.
3. Description of monument and accessories set to perpetuate the corner position.
4. Sketch of corner, show all pertinent data which can best be shown in a sketch example, corner marking, topography ties, position of accessories, etc.
5. Certification must be signed and sealed by Land Surveyor registered in the State of Montana.
6. Fill in Cross Index & Section Diagram at bottom of sheet.

CERTIFIED CORNER RECORDATION

Corner 1/4 of Secs. 10 & 15 T. 29 N. R. 30 W. P.M.M. Lincoln County

I. 1898 G.L.O. record by Paul S. A. Bickel: Set a stone monument and two bearing trees.

1964 B.L.M. Remonumentation by Gerald F. Pittman et al: "The 1/4 sec. cor. of secs. 10 and 15, monumented with a slate stone, 16 x 10 x 8 ins., loosely set and mkd. 1/4 on the N. face, and witnessed by the remains of the original bearing trees: At the corner point; set an iron post, 30 ins. long, 2 1/2 ins. diam., 27 ins. in the ground, with brass cap mkd.



from which

The remains of the original bearing trees:

A stump, 20 ins. diam., bears S5° E, 51 lks. dist., visible marks BT. (Record)

A stump, 24 ins. diam., bears N27° W, 43 lks. dist., visible marks BT. (Record)

The new bearing trees:

A fir, 5 ins. diam., bears S59° W, 34 lks. dist., mkd. 1/4 S15 BT.

A fir, 8 ins. diam., bears N64° W, 6 lks. dist., mkd. 1/4 S10 BT.

Bury the original stone alongside of the iron post."

II. Found an iron pipe, 2 1/2 ins. diam., 6 ins. above the ground with 3 1/4 ins. diam., B.L.M. brass cap marked as shown above, from which

A stump, 20 ins. diam., bears S5° E, 33.7 ft. (51 lks.) dist., visible marks BT.

A stump, 24 ins. diam., bears N26° W, 22.1 ft. (33 lks.) dist., visible marks BT. (Record 43 lks.)

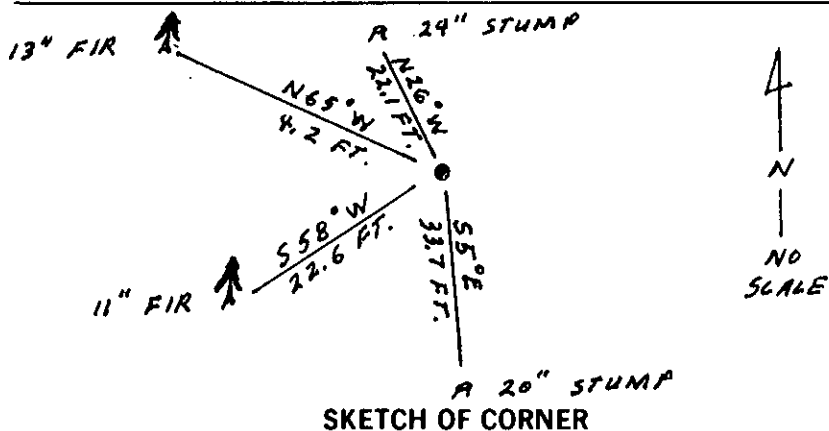
A fir, 11 ins. diam., bears S58° W, 22.6 ft. (34 lks.) dist., healed face.

A fir, 13 ins. diam., bears N65° W, 4.2 ft. (6 lks.) dist., healed face.

III. Painted red bands around the bearing trees and attached Land Survey Monument and Bearing Tree signs.

Set a 6 ft. galvanized steel guard post with Land Survey Marker and Property Boundary decals, West, 3 ft.

Magnetic Declination: 20° East



CERTIFICATION

Mark A. Federman

I, _____
certify the information shown herein is true and correct.

Signature Ground Party Chief

Alvah P. Hughes

I, _____
certify that this Corner Record correctly represents work performed by me or under my direction in compliance with the "Corner Recordation Act" (70-22-101, et seq., M.C.A.)

Signature of Surveyor & Seal: Alvah P. Hughes

Date: 12/11/92 Reg. No. 7322

Employer: U.S. FOREST SERVICE

Office of Clerk and Recorder, County of Lincoln . This "corner

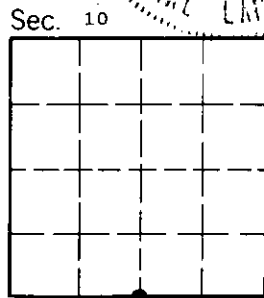
record" was filed for record on 1-4-93

was noted on the cross-index plat and is assigned page No. 5250 , in

book No. _____

Carol M. Cummings
County Official

Cross Index No. J-15 T. 29 N R. 30 W PMM



• - corner this sheet