

INSTRUCTIONS

1. Original and/or subsequent record used to evaluate the corner position.
2. Description of evidence found, note discrepancies in the record, state method of establishing lost or obliterated corners.
3. Description of monument and accessories set to perpetuate the corner position.
4. Sketch of corner, show all pertinent data which can best be shown in a sketch example, corner marking, topography ties, position of accessories, etc.
5. Certification must be signed and sealed by Land Surveyor registered in the State of Montana.
6. Fill in Cross Index & Section Diagram at bottom of sheet.

CERTIFIED CORNER RECORDATION

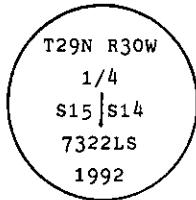
Corner 1/4 Cor. of Secs. 14 & 15 T. 29 N. R. 30 W. P.M.M. Lincoln County

I. 1898 G.L.O. record by Paul S. A. Bickel: "An alder tree, 6 ins. diam. which I mark 1/4 S 15 on W. and 1/4 on E. sides, from which

An alder, 7 ins. diam., bears S5° E, 9 lks. dist., marked 1-4 S B.T.
 An alder, 7 ins. diam., bears N78° W, 13 lks. dist., marked 1-4 S B.T.

II. No monument tree or bearing trees found.

III. At position determined by single proportion distance, set an aluminum pipe, 2 1/2 ins. diam., 30 ins. long, 28 ins. in the ground with 3 1/4 ins. diam., U.S.P.S. aluminum cap marked as shown:



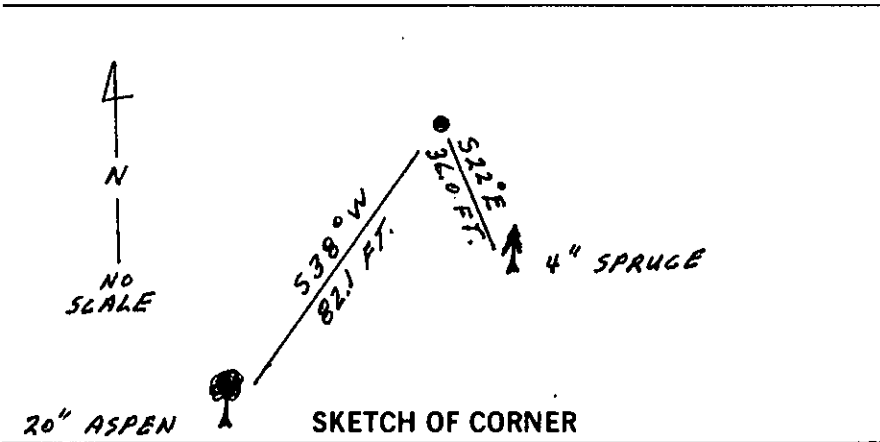
Establish two new bearing trees:

A spruce, 4 ins. diam., bears S22° E, 36.0 ft. dist., mkd. X BT.
 A aspen, 20 ins. diam., bears S38° W, 82.1 ft. dist., mkd. 1/4 S15 BT.

Painted red bands around the bearing trees and attached Land Survey Monument and Bearing Tree signs.

Set a 6 ft. galvanized steel guard post with Land Survey Marker and Property Boundary decals, South, 4 ft.

Magnetic Declination: 20° East

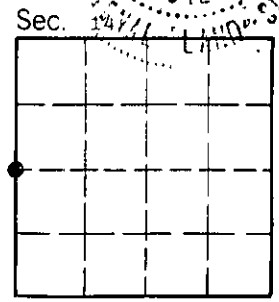


CERTIFICATION

I. Thomas M. Hommel
 certify the information shown herein is true and correct.
Thomas M Hommel
 Signature Ground Party Chief

II. Alvah P. Hughes
 certify that this Corner Record correctly represents work performed by me or under my direction in compliance with the "Corner Recordation Act" (70-22-101, et seq., M.C.A.)
Alvah P. Hughes
 Signature of Surveyor & Seal
 Date: 12/15/92 Reg. No. 7322 LS HUGHES
 Employer: U.S. FOREST SERVICE

Office of Clerk and Recorder, County of Lincoln. This "corner record" was filed for record on 1-4-93 was noted on the cross-index plat and is assigned page No. 5248, in book No. _____, in Coral M Cummings by BB County Official



Cross Index No. L-17 T. 29 N R. 30 W PMM

• - corner this sheet