

INSTRUCTIONS

1. Original and/or subsequent record used to evaluate the corner position.
2. Description of evidence found, note discrepancies in the record, state method of establishing lost or obliterated corners.
3. Description of monument and accessories set to perpetuate the corner position.
4. Sketch of corner, show all pertinent data which can best be shown in a sketch example, corner marking, topography ties, position of accessories, etc.
5. Certification must be signed and sealed by Land Surveyor registered in the State of Montana.
6. Fill in Cross Index & Section Diagram at bottom of sheet.

CERTIFIED CORNER RECORDATION

Corner 1/4 Cor. of Secs. 13 & 14 T. 29 N. R. 30 W. P.M.M. Lincoln County

I. 1898 G.L.O. record by Paul S. A. Bickel: Set a stone monument and two bearing trees.

1964 B.L.M. Remonumentation by Gerald F. Pittman et al: "The 1/4 sec. cor. of secs. 13 and 14, monumented with a slate stone, 18 x 12 x 5 ins., firmly set and mkd. 1/4 on the W. face, and witnessed by the remains of the original bearing trees; At the corner point: set an iron post, 30 ins. long, 2 1/2 ins. diam., 27 ins. in the ground, with brass cap mkd.

T29N R30W

1/4

S14 S13

1964

from which

The remains of the original bearing trees:

A stump, 24 ins. diam., bears East, 30 lks. dist., mkd. with an overgrown blaze. (Record)

A stump, 16 ins. diam., bears N53 1/2° W, 18 lks. dist., visible marks BT.

(Record: N53° 20' W, 18 lks.)

The new bearing trees:

A pine, 8 ins. diam., bears S54° E, 50 lks. dist., mkd. 1/4 S13 BT.

A pine, 7 ins. diam., bears S2 1/2° W, 28 lks. dist., mkd. 1/4 S14 BT.

Bury the original stone alongside of the iron post."

II. Found an iron pipe, 2 1/2 ins. diam., 4 ins. above the ground with 3 1/4 ins. diam. B.L.M. brass cap marked as shown above, from which

A larch stump, 24 ins. diam., bears East, 19.4 ft. (29 lks.) dist., no visible scribe.

A fir stump, 21 ins. diam., bears N53° W, 11.8 ft. (18 lks.) dist., no visible scribe.

A pine snag, 10 ins. diam., bears S54° E, 32.4 ft. (49 lks.) dist., mkd. 1/4 S13 BT.

A pine, 10 ins. diam., bears S2 1/2° W, 18.5 ft. (28 lks.) dist., mkd. 1/4 S14 BT.

III. Establish one new bearing tree:

A fir, 8 ins. diam., bears N72° E, 21.6 ft. dist., mkd. 1/4 S13 BT.

Painted red bands around the bearing trees and attached Land Survey Monument and Bearing Tree signs.

No guard post set.

Magnetic Declination: 20° East

CERTIFICATION

Mark A. Federman

I, _____
certify the information shown herein is true and correct.

Signature Ground Party Chief

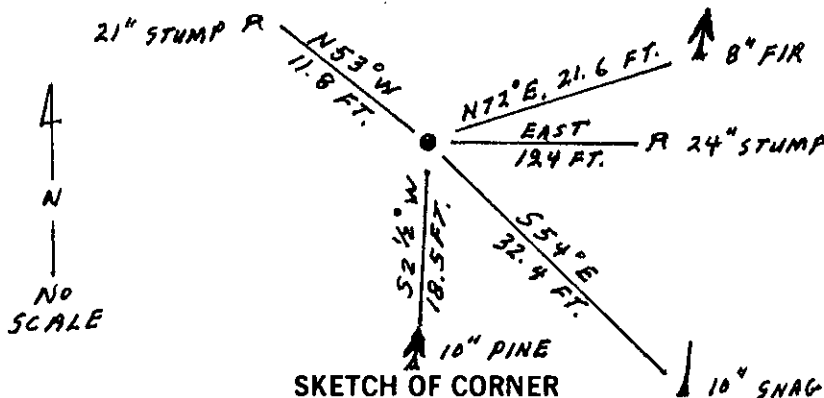
Alvah F. Hughes

I, _____
certify that this Corner Record correctly represents work performed by me or under my direction in compliance with the "Corner Recordation Act" (70-22-101, et seq., M.C.A.)

Signature of Surveyor & Seal

Date: 12/11/92 Reg. No. 7322 LS

Employer: U.S. FOREST SERVICE

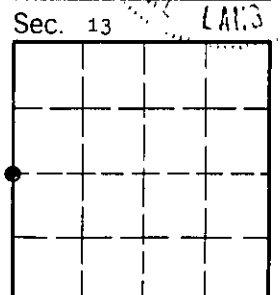


Office of Clerk and Recorder, County of Lincoln. This "corner record" was filed for record on 1-4-93 was noted on the cross-index plat and is assigned page No. 5247, in book No. _____

Coral M. Cummings by BJB
County Official

Cross Index No. L-21 T. 29 N R. 30 W P.M.M.

Adopted July 1, 1981, Montana Board of Professional Engineers & Land Surveyors



• - corner this sheet