

INSTRUCTIONS

1. Original and/or subsequent record used to evaluate the corner position.
2. Description of evidence found, note discrepancies in the record, state method of establishing lost or obliterated corners.
3. Description of monument and accessories set to perpetuate the corner position.
4. Sketch of corner, show all pertinent data which can best be shown in a sketch example, corner marking, topography (ies, position of accessories, etc.
5. Certification must be signed and sealed by Land Surveyor registered in the State of Montana.
6. Fill in Cross Index & Section Diagram at bottom of sheet.

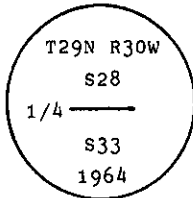
CERTIFIED CORNER RECORDATION

Corner 1/4 Cor. of Secs. 28 & 33 T. 29 N. R. 30 W. P.M.M. Lincoln County

I. 1898, original G.L.O. record by Paul S.A. Bickel: Set a slate stone and mkd. two bearing trees.

1964, B.L.M. Remonumentation by Pittman et al: "The 1/4 sec. cor. of secs. 28 and 33, as determined from the remains of the original bearing trees.

At the corner point, set an iron post, 30 ins. long, 2 1/2 ins. diam., 27 ins. in the ground, with brass cap mkd.



from which

The remains of the original bearing trees:

- A stumphole, bears N28 1/2° E, 37 lks. dist., remains of tree lying on ground, mkd. 1/4 S BT. (Record).
- A stumphole, bears S43 1/2° E, 66 lks. dist. (Record)

The new bearing trees:

- A fir, 9 ins. diam., bears N26° E, 49 lks. dist., mkd. 1/4 S28 BT.
- A fir, 6 ins. diam., bears S64° E, 56 lks. dist., mkd. 1/4 S33 BT."

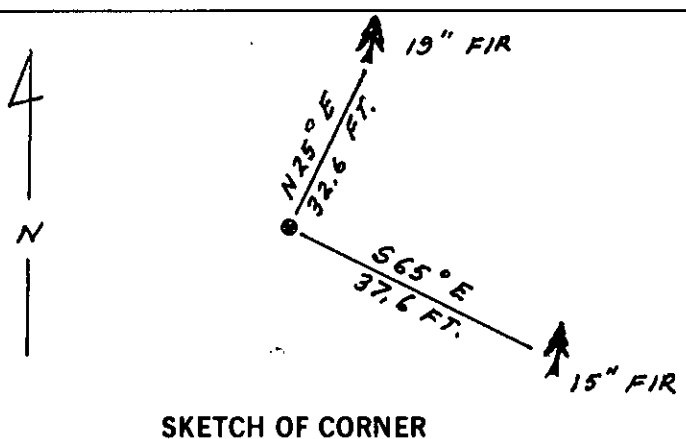
II. Found, a 2 1/2 ins. diam. iron pipe, with a 3 1/4 ins. diam., B.L.M. brass cap marked as shown above, from which

- A douglas fir, 19 ins. diam., bears N25° E, 32.6 ft. (49.4 lks.) dist., overgrown scribe.
- A douglas fir, 15 ins. diam., bears S65° E, 37.6 ft. (57 lks.) dist., overgrown scribe.

III. Painted a red band around each bearing tree and attached Land Survey Monument and Bearing Tree signs.

Set a 6 ft. galvanized steel guard post with attached Land Survey Marker and Property Boundary decals, 3 ft., East from corner.

Magnetic Declination: East 19°



CERTIFICATION

I, Gary C. Crismon
certify the information shown herein is true and correct.

Gary C. Crismon
Signature Ground Party Chief

I, Alvah F. Hughes
certify that this Corner Record correctly represents work performed by me or under my direction in compliance with the "Corner Recordation Act" (70-22-101, et seq., M.C.A.)

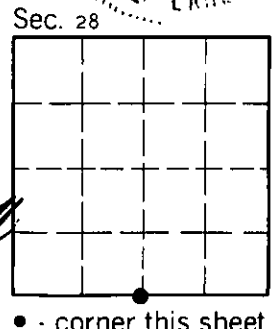
Alvah F. Hughes
Signature of Surveyor & Seal

Date: 12/9/90 Reg. No. 7322

Employer: U.S. FOREST SERVICE

Office of Clerk and Recorder, County of Lincoln. This "corner record" was filed for record on 1-3-91 was noted on the cross-index plat and is assigned page No. 4463, in book No. _____

Janae BF Siegel by Bill Bruch
County Official



V-11 Cross Index No. _____ T. _____ R. _____ P.M.M.