

## INSTRUCTIONS

1. Original and/or subsequent record used to evaluate the corner position.
2. Description of evidence found, note discrepancies in the record, state method of establishing lost or obliterated corners.
3. Description of monument and accessories set to perpetuate the corner position.
4. Sketch of corner, show all pertinent data which can best be shown in a sketch example, corner marking, topography ties, position of accessories, etc.
5. Certification must be signed and sealed by Land Surveyor registered in the State of Montana.
6. Fill in Cross Index & Section Diagram at bottom of sheet.

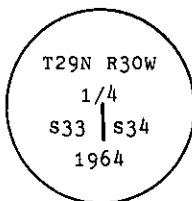
## CERTIFIED CORNER RECORDATION

Corner 1/4 Cor. of Secs. 33 & 34 T. 29 N. R. 30 W. P.M.M. Lincoln County

I. 1898, original G.L.O. record by Paul S.A. Bickel: Set a slate stone and mkd. two bearing trees.

1964, BLM Remonumentation by Pittman et al: "The 1/4 sec. cor. of secs. 33 and 34, as determined from the remains of the original bearing trees.

At the corner point, set an iron post, 30 ins. long, 2 1/2 ins. diam., 27 ins. in the ground, with brass cap mkd.



from which

The remains of the original bearing trees:

A stumphole, bears S67 1/4° E, 120 lks. dist., remains of tree lying on ground, visible marks 1/4 S. (Record: S67 20° E, 120 lks.)

A stumphole, bears N74 3/4° W, 118 lks. dist., remains of tree lying on ground, visible marks 1/4 S BT. (Record: N74 40° W, 118 lks.)

The new bearing trees:

A larch, 6 ins. diam., bears N63° E, 26 lks. dist., mkd. 1/4 S34 BT.

A larch, 8 ins. diam., bears S38° W, 15 lks. dist., mkd. 1/4 S33 BT."

II. Found a 2 1/2 ins. diam. iron pipe, with a 3 1/4 ins. diam., BLM brass cap marked as shown above, from which

A larch, 8 ins. diam., bears N63° E, 17.1 ft. (25.9 lks.) dist., overgrown scribe.

A larch, 11 ins. diam., bears S40° W, 10.2 ft. (15.5 lks.) dist., overgrown scribe.

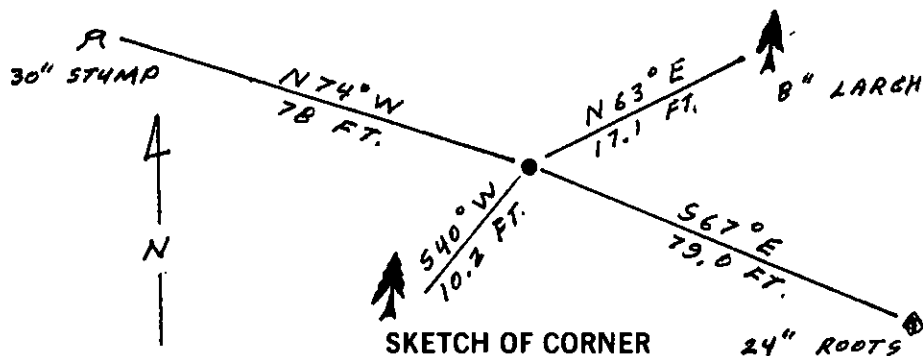
A decayed stump, 30 ins. diam., 6 ins. high, bears N74° W, 78 ft. (118.2 lks.) dist. (original)

A root mass, 24 ins. diam., bears S67° E, 79.0 ft. (119.7 lks.) dist. (original)

III. Painted a red band around each bearing tree and attached Land Survey Monument and Bearing Tree signs.

Set a 6 ft. galvanized steel guard post, with Land Survey Marker and Property Boundary decals attached, 4 ft., South from corner.

Magnetic Declination: East 19°



SKETCH OF CORNER

## CERTIFICATION

I, Gary C. Crismon  
certify the information shown herein is true and correct.

Gary C. Crismon  
Signature Ground Party Chief

I, Alvah F. Hughes  
certify that this Corner Record correctly represents work performed by me or under my direction in compliance with the "Corner Recordation Act" (70-22-101, et seq., M.C.A.)

Alvah F. Hughes  
Signature of Surveyor & Seal

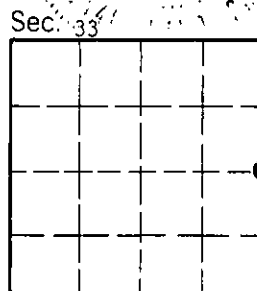
Date: 12/9/90 Reg. No. 7322LS 7322LS

Employer: U.S. FOREST SERVICE

Office of Clerk and Recorder, County of Lincoln. This "corner record" was filed for record on Jan 3, 1991 was noted on the cross-index plat and is assigned page No. 4458, in book No. \_\_\_\_\_

County Official

X-13 29 N 30 W  
Cross Index No. \_\_\_\_\_ T. \_\_\_\_\_ R. \_\_\_\_\_ P.M.M.



• - corner this sheet