

CERTIFIED LAND CORNER RECORDATION

CENTER OF SECTION 18 TWP. 29 N., R. 30 W., M.P.M.

DESCRIPTION OF CORNER EVIDENCE FOUND, AND ORIGINAL RECORD (IF KNOWN)

(Corner evidence found)

All exterior corners of this Section except the East  $\frac{1}{4}$  Corner have been perpetuated by Standard Brass cap monuments set by the Bureau of Land Management.

DESCRIPTION OF MONUMENT AND ACCESSORIES ESTABLISHED TO PERPETUATE THE ORIGINAL LOCATION OF THIS CORNER:

Date of work: Jan. 19, 1973

For the center of Section 18 we set a steel rod from which  
A 10 Inch Pine bears N  $8^{\circ}45'$  E 67.9 feet scribed C  $\frac{1}{4}$  S 18 and posted  
An 8 inch pine bears S  $83^{\circ}50'$  W 70.6 Feet scribed C  $\frac{1}{4}$  S 18 and posted

SKETCH, WITH COURSE AND DISTANCE TO ADJACENT CORNERS IF DETERMINED IN THIS SURVEY.  
(MAY SKETCH OR PASTE REPRODUCTION ON REVERSE SIDE.)

SEE OTHER SIDE

Surveyor's Seal

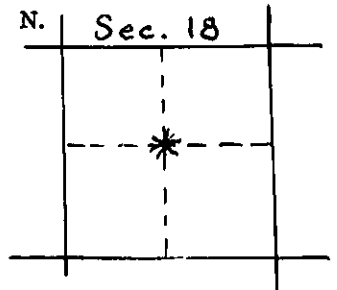
I, Jack H. Ninneman  
certify that the information shown herein is true and correct.

*Jack H. Ninneman*  
Signature of Ground Party Chief

I, Jack W. Ninneman  
certify that I have carefully performed or reviewed the work done on the diagrammed corner as reported on this recordation form and approve the same.

*Jack W. Ninneman*  
Signature of Surveyor

DIAGRAM OF CORNER:



\* = Corner recorded on the sheet

534 E S  
Registration Number

Office of Clerk and Recorder, County of Lincoln

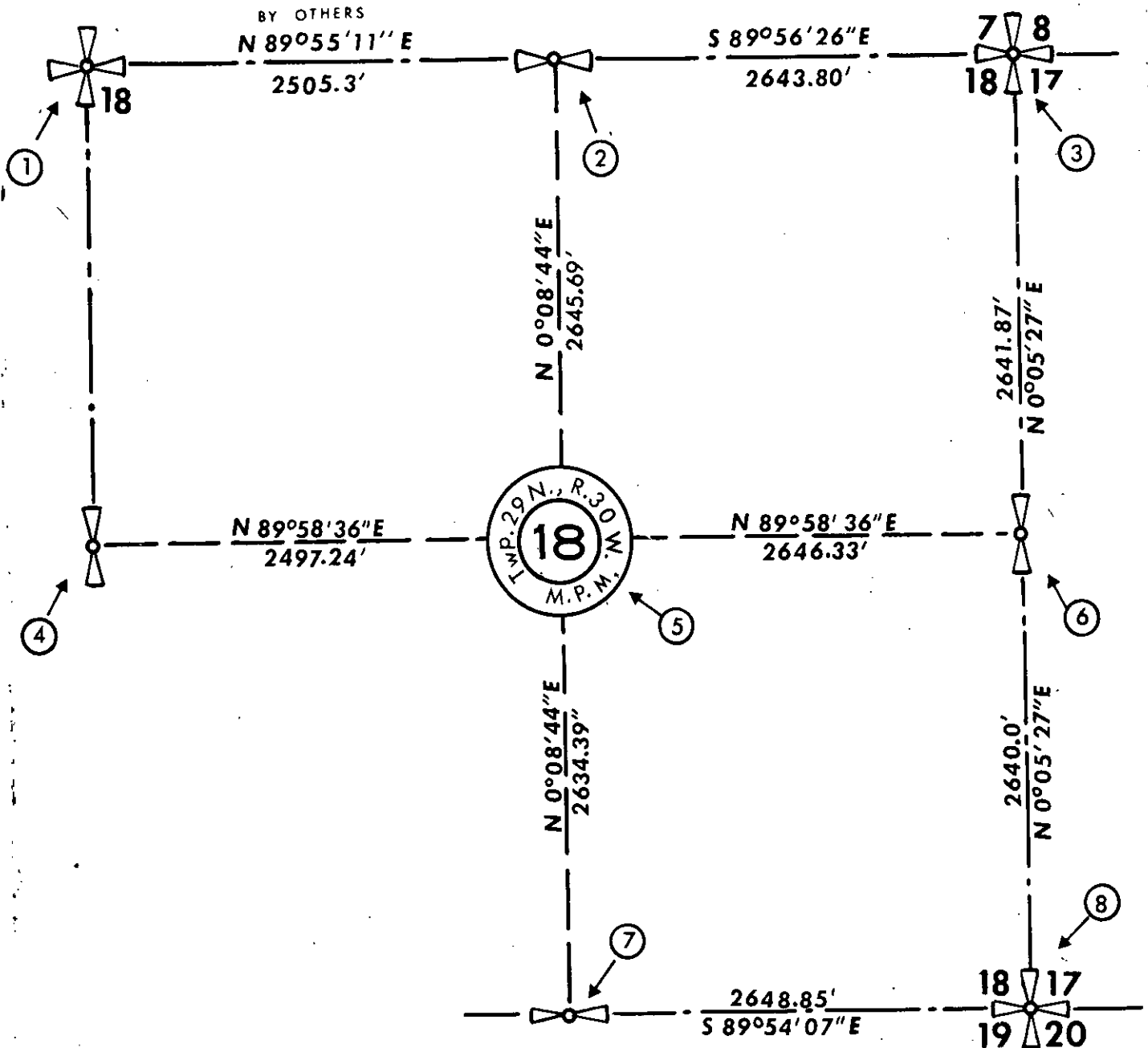
This "corner record" was filed for record on the 13<sup>th</sup> day of February 1973, was noted on the cross-index plat and is assigned page No. 288, in book No. 1

*Edward L. Vaughn* County Official  
*M. W. W. W.* Deputy

LINCOLN COUNTY, MONTANA.

TWP. 29 N., R. 30 W., M.P.M.

SECTION 18



CORNERS NUMBERS 1, 2, 3, 4, 7, AND 8, ARE ALL STANDARD BRASS CAP MONUMENTS SET BY THE BUREAU OF LAND MANAGEMENT.

FOR CORNER NUMBER 5 WE SET A STEEL ROD FROM WHICH

A 10 INCH PINE BEARS N 8°45'E 67.9 FEET SCRIBED C  $\frac{1}{4}$  S 18 AND POSTED

AN 8 INCH PINE BEARS S 83° 50'W 70.6 FEET SCRIBED C  $\frac{1}{4}$  S 18 AND POSTED

CORNER NUMBER 6 WAS NOT SET.