

CERTIFIED LAND CORNER RECORDATION
(REFERENCE FSM 7153.53)

DESCRIPTION OF CORNER EVIDENCE FOUND, AND ORIGINAL RECORD (IF KNOWN)

This corner was established by survey of Libby Airport.

DESCRIPTION OF MONUMENT AND ACCESSORIES ESTABLISHED
TO PERPETUATE THE ORIGINAL LOCATION OF THIS CORNER:

Set a 2 inch galvanized iron pipe 24 inches
in ground, at exact corner point indicated on
plat of this designated corner, with brass
cap marked, from which:

Date of work: 3/27/70

Libby
Airport
COR 1
1970
SJS 2532 S

A 11 in. Ponderosa Pine bears N. 50° E. - 114 lks - mkd rm

A 10 in. Ponderosa Pine bears S. 87° E. - 28 lks - mkd rm

Location, attention and bearing tree signs were posted at the corner.

SKETCH, WITH COURSE AND DISTANCE TO ADJACENT CORNERS IF DETERMINED IN THIS SURVEY.
(MAY SKETCH OR PASTE REPRODUCTION ON REVERSE SIDE.)

Plat attached to reverse side of recordation form for corner no. 1
of survey of Libby Airport.

Surveyor's Seal

I, A. R. TRENKLE
certify that the information shown herein is true and
correct.

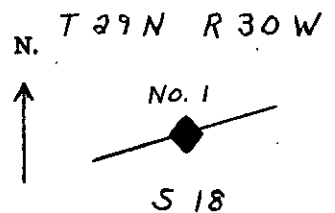
A. R. Trenkle
Signature of Ground Party Chief

I, STANLEY J. SKOUSEN
certify that I have carefully performed or reviewed the
work done on the diagrammed corner as reported on this
recordation form and approve the same.

Stanley J. Skousen
Signature of Surveyor

2532 S
Registration Number

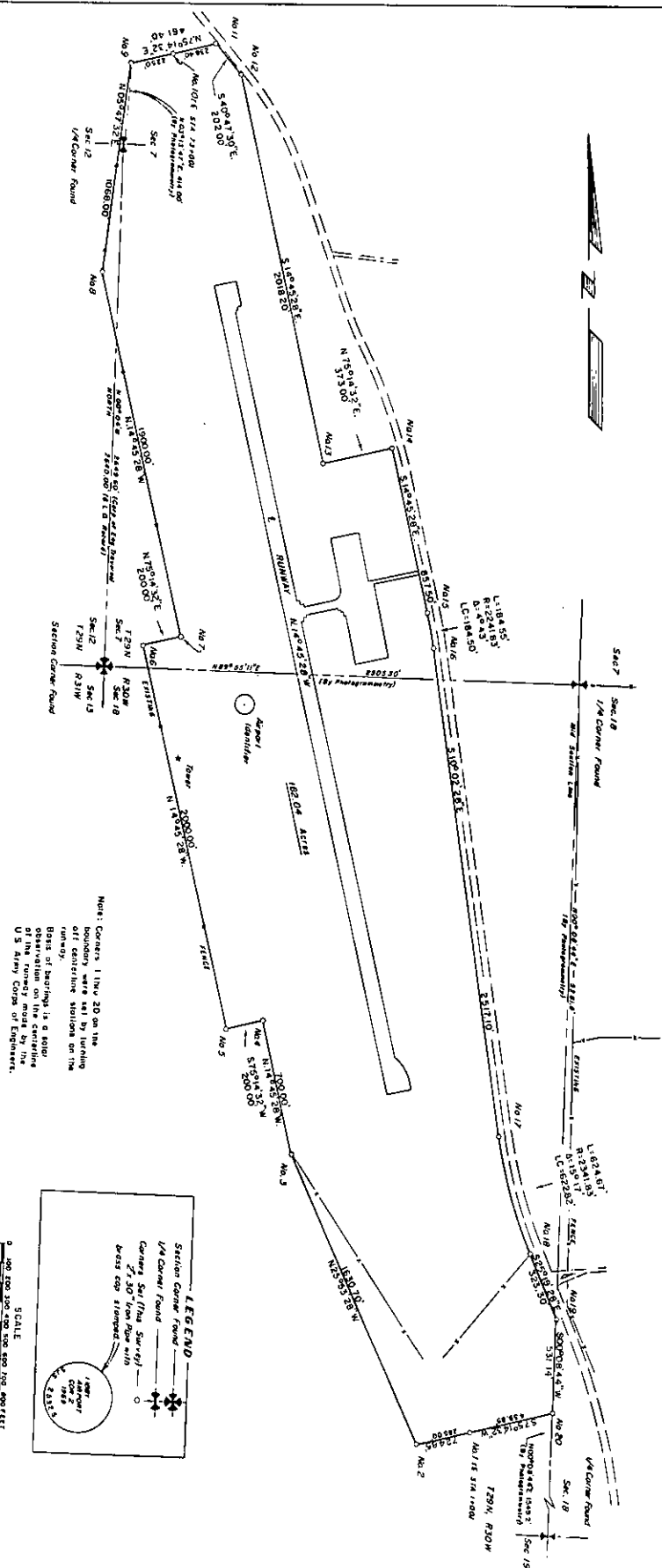
DIAGRAM OF CORNER:



◆ = Corner recorded on the sheet

Office of Clerk and Recorder, County of Lincoln
This "corner record" was filed for record on the 6th. day of May 1970, was noted on the cross-index plat and is
assigned page No. 183, in book No. 1
ELEANOR L. VAUGHN, By: *Mar Upton*
County Official Deputy
Cross Index No. 113 T. 29 R. 30 Mer.

SECTIONS 7 & 18 OF T29N, R30W P.M.M.



CERTIFICATE

I hereby certify that I am a registered surveyor in the State of Montana. I have reviewed the survey shown above and have checked all bearings and distances by photogrammetric methods. I have caused monuments to be set at the positions indicated and certify that they are of the type shown, are marked as shown and are sufficient to enable the survey to be re-traced.

STANLEY J. SKOUSEN
MONTANA REGISTRATION NO. 2532 S

STANLEY J. SKOUSEN
MONTANA REGISTRATION NO. 2532 S