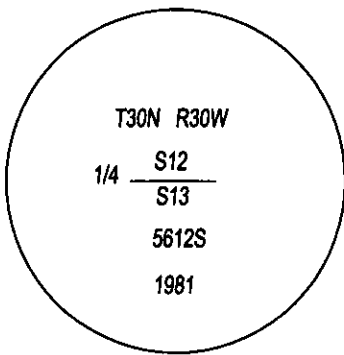
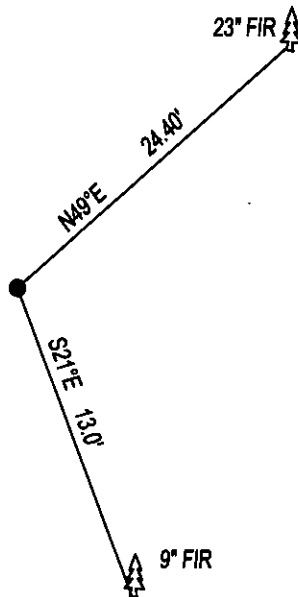


PLSS CORNER RECORDATION

CORNER N1/4 CORNER SEC. 13 T. 29N , R. 30W , P.M.M., LINCOLN COUNTY

FOUND: 3 1/4" ALUM CAP STAMPED AS SHOWN, FROM WHICH;
23" FIR BEARS N49°E 24.40' WITH OVERGROWN SCRIBE.
9" FIR BEARS S21°E 13.0' WITH OVERGROWN SCRIBE.



SKETCH OF CORNER

CERTIFICATION

I, DAN CROFT
CERTIFY THE INFORMATION SHOWN HEREIN IS TRUE AND CORRECT.

SIGNATURE GROUND PARTY CHIEF

I, MARC J. CARSTENS
CERTIFY THAT THIS CORNER RECORD CORRECTLY REPRESENTS WORK
PERFORMED BY ME OR UNDER MY DIRECTION IN COMPLIANCE WITH THE
"CORNER RECORDATION ACT" (70-22-101, ET SEQ., M.C.A.)

SIGNATURE OF SURVEYOR & SEAL

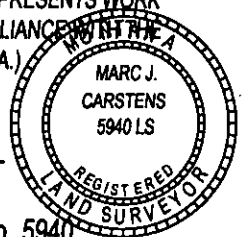
12-29-2014

DATE

CARSTENS SURVEYING

EMPLOYER

LIC. No. 5940



OFFICE OF CLERK AND RECORDER, COUNTY OF LINCOLN . THIS "CORNER RECORD" WAS FILED FOR RECORD ON
_____ WAS NOTED ON THE CROSS-INDEX PLAT AND IS ASSIGNED PAGE NO. _____, IN BOOK NO. _____.

COUNTY OFFICIAL

CROSS INDEX NO. J-23 T. 29N

ADOPTED NOVEMBER 7, 2012, MONTANA BOARD OF PI

255281 BOOK: CCR CC&R'S PAGE: 12183 Pages: 1

STATE OF MONTANA LINCOLN COUNTY

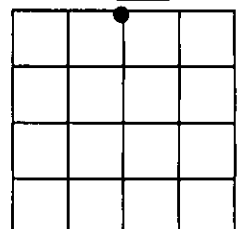
RECORDED: 12/31/2014 10:20 KOI: CC&R'S

TAMMY D. LAUER CLERK AND RECORDER

FEE: \$0.00

FOR: CARSTENS LAND SURVEYING P.O. BOX 1374, POLSON, MONTANA

SEC. 13



● CORNER THIS SHEET