

CERTIFIED CORNER RECORDATION

Corner N 1/16 S32 T. 29 N. R. 30 W. P.M.M. Lincoln County

I. Record: None

II. Found: During a corner search no evidence of monuments or accessories were recovered.

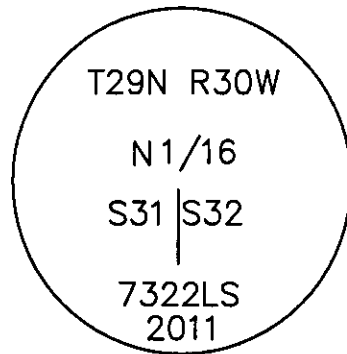
III. Perpetuation: At the corner point, determined by survey, set a 5/8 ins. diam. steel rebar 30 ins. long, 28 ins. in the ground, with a 3 1/4 ins. diam. Aluminum cap marked as shown below from which:

The N1/16 corner falls in the existing Libby Creek flood plane and no bearing trees fall within limits.

A 5 ft. long steel post bears North 2.50 ft. dist.
A 5 ft. long steel post bears East 3.70 ft. dist.

Magnetic declination: 18° East

Equipment used: Hand compass and loggers tape

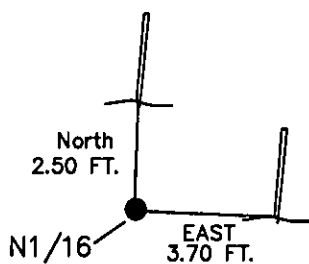


NOTE: Refer to Certificate of Survey No. 4107RB Lincoln County Records for additional survey information.

Kootenai Surveyors Inc., 314 California Av., Libby, MT. 59923 (406) 293-4354

LORD Sec. 32

SEC.31 SEC.32



SKETCH OF CORNER

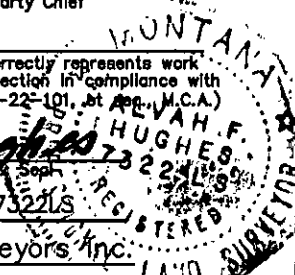
CERTIFICATION

I, Kelly Rooney
certify the information shown herein is true and correct.
Kelly Rooney
Signature Group Party Chief

I, Alvah F. Hughes
certify that this Corner Record correctly represents work performed by me or under my direction in compliance with the Corner Recordation Act (MCA 10-22-101, et seq.)
Alvah F. Hughes
Signature of Surveyor

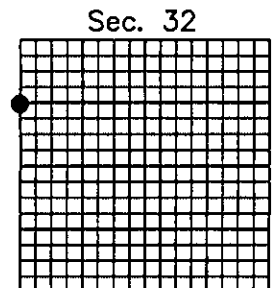
Date: 08/12/2011 Reg. No. 7322LS

Employer: Kootenai Surveyors Inc.



Office of Clerk and Recorder, County of Lincoln. This "corner record" 236503 BOOK: CCR CC&R'S PAGE: 11939 Pages: 1

STATE OF MONTANA LINCOLN COUNTY
RECORDED: 12/19/2011 2:07 KOI: CC&R'S
was note TAMMY D. LAUER CLERK AND RECORDER
book No. FEE: \$0.00 BY: Robin A. Benson, Deputy
TO: FILED



• corner this sheet

Cross Index No. W-05 T. 29N R. 30W P.M., MT