

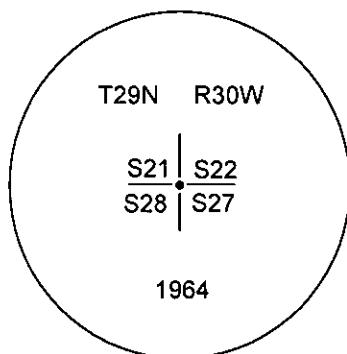
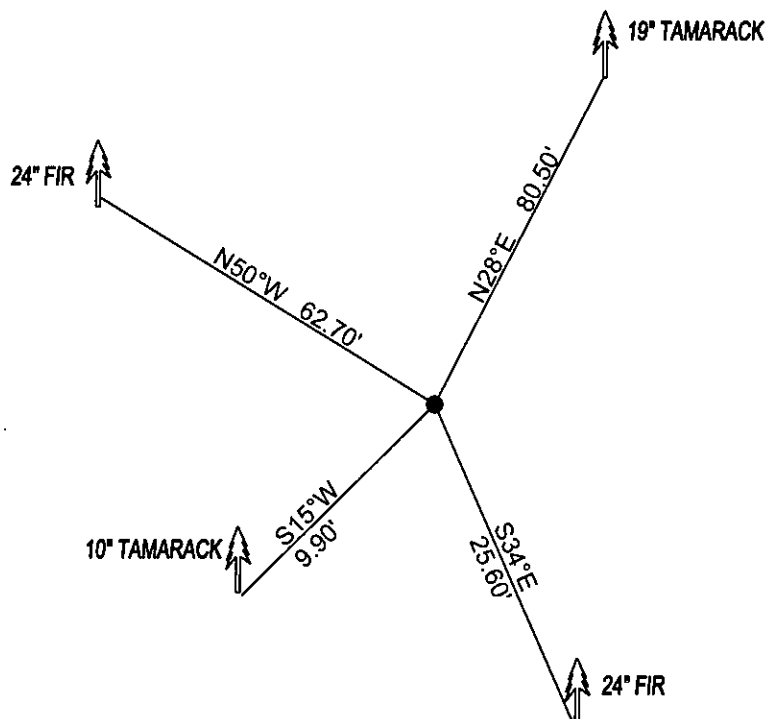
CERTIFIED CORNER RECORDATION

Corner NW CORNER SEC. 27 T. 29N R. 30W P.M.M. County LINCOLN

FOUND: 3 1/4" BRASS CAP STAMPED AS SHOWN, FROM WHICH:
19" TAMARACK BEARS N28°E 80.50' SCRIBE OVERGROWN.
14" FIR BEARS S34°E 25.60' SCRIBE OVERGROWN.
10" TAMARACK BEARS S15°W 9.90' SCRIBED T29N R30W S28 BT.
24" FIR BEARS N50°W 62.70' WITH SCRIBE OVERGROWN.

MAINTENANCE: REMOVED BRUSH FROM CORNER AREA.

ATTACHED BT TAGS AND PAINTED A RED 6" BAND AND SCRIBE RED
SET 5 FOOT STEEL POST 2 FEET SOUTH OF CORNER.



SKETCH OF CORNER

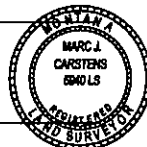
CERTIFICATION

I, DAN CROFT
certify the information shown herein is true and correct.

Signature Ground Party Chief

I, MARC J. CARSTENS
certify that this Corner Record correctly represents work
performed by me or under my direction in compliance with
the "Corner Recordation Act" (70-22-101, et seq., M.C.A.)

[Signature]
Signature of Surveyor & Seal



Date: 08-2010 Reg. No. 5940 LS

Employer: CARSTENS LAND SURVEYING

Office of Clerk and Recorder, County of LINCOLN . This "corner

record" was filed for record on 227951 BOOK: CCR CC&R'S PAGE: 11536 Pages: 1 • Sec. 27

was noted on the cross-index plat and STATE OF MONTANA LINCOLN COUNTY

book No. TAMMY D. LAUER CLERK AND RECORDER
FEE: \$0.00 BY: [Signature]
TO: CARSTENS LAND SURVEYING P.O. BOX 1374, POLSON, MONTANA

Cross Index No. R-13 T. 29N R. 30W PMM

Adopted July 1, 1981, Montana Board of Professional Engineers & Land Surveyors

• corner this sheet