

CERTIFIED CORNER RECORDATION

Corner 1/4 S7 S18 T. 29 N. R. 30 W. P.M.M. LINCOLN County

I. Record: 1898 Original G.L.O. Subdivision of Fractional Township 29 North, Range 30 West, by Paul S. A. Rickel: 39.90 chs. Set a slate stone, 16x6x5 ins., 11 ins. in the ground, for 1/4 Sec. Cor. marked 1/4 on N. face. From which:

- A pine, 22 ins. diam., bears N33°E, 32 lks. dist., marked 1/4 S7 BT.
- A pine, 24 ins. diam., bears S49°10'W, 38 lks. dist., marked 1/4 S18 BT.

1962 B.L.M. Remonumentation of Certain Corners in Township 29 North, Range 30 West, by Gerald F. Pittman, Richard L. Larimer and Harold W. Grusing: The 1/4 sec. cor. of secs. 7 and 18, monumented with a slate stone, 16x6x5 ins., firmly set and mkd. 1/4 on the N. face, and witnessed by the remains of the original bearing trees.

At the corner point

Set an iron post, 30 ins. long, 2 1/2 ins. diam., 27 ins. in the ground, with brass cap mkd.

From which

The remains of the original bearing trees:

- A stump, 22 ins. diam., bears N33°E, 32 lks. dist., visible marks BT. (Record)
- A stump, 24 ins. diam., bears S49°W, 38 lks. dist. visible marks BT. (Record: S49°10'W, 38 lks.)

The new bearing trees:

- A pine, 6 ins. diam., bears S56°W, 23 lks. dist., marked 1/4 S18 BT.
- A pine, 6 ins. diam., bears N53°W, 17 lks. dist., marked 1/4 S7 BT.

Bury the original stone alongside of the iron pipe.

1984 Certified Corner Recordation by Thomas C. Hill, Reg. No. 5612S;
1898 GLO record.
1964 BLM Remonumentation record.

Found BLM brass cap on an iron pipe, 8 ins. above ground, marked as shown; from which:

- A pine, 8 ins. diam., bears N52°W, 11.6 ft. (17 lks.) dist., scribe part visible.
- A pine, 6 ins. diam., bears S53°W, 15.3 ft. (23 lks.) dist., scribe visible.

Set a guard post with a "Survey Marker" decal attached, 1 ft. North from corner. Painted a 6 ins. red band around each bearing tree and attached "Attention" and "Bearing Tree" signs where needed.

II. Found: A 2 1/2 in. diam. iron pipe, 6 ins. above ground, firmly set with a 3 1/4 in. diam. BLM brass cap marked as shown above from which:

- A pine high stump, 6 ins diam., bears S52°W, 15.3 ft. dist., marked 1/4 S 18 BT.
- A pine, 10 ins diam., bears N52°W, 11.5 ft. dist., marked with a healed face.

III. Establish one new bearing trees:

- A pine, 11 ins. diam., bears S7°W, 30.2 ft. dist., mkd. 1/4 S 18 BT.

Painted a 6 in. red band around bearing trees and attached Land Survey Monument and Bearing Tree signs

Date of Fieldwork: 5/14/2004

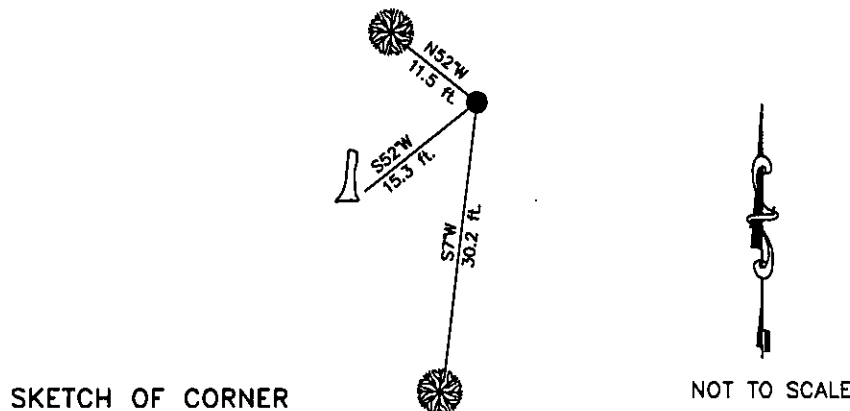
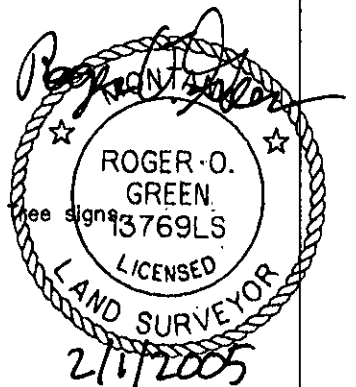
Survey crew: Steve Boyer

Magnetic declination: 18° East assumed

Equipment used: Hand compass and loggers tape

U.S. Forest Service, Supervisors Office, 1101 Hwy. 2 West, Libby, MT 59923 (406) 293-6211

T29N R30W
1/4 S7
S18
1964



SKETCH OF CORNER

NOT TO SCALE

CERTIFICATION

I, Steven A. Boyer 9750LS
certify the information shown herein is true and correct.

Steven A. Boyer
Signature Ground Party Chief

I, Roger O. Green
certify that this Corner Record correctly represents work performed by me or under my direction in compliance with the "Corner Recordation Act" (MCA 10-22-101, et seq., M.C.A.)

Roger O. Green
Signature of Surveyor & Seal

Date: 05/14/2004 Reg. No. 13769LS

Employer: U. S. Forest Service

Office of Clerk and Recorder, County of Lincoln This "corner

record" was filed ' 182252 BOOK: CCR CC&R'S PAGE: 10777 Pages: 1

was noted on the STATE OF MONTANA LINCOLN COUNTY

book No. RECORDED: 02/02/2005 9:16 KOI: CC&R'S

CORAL M. CUMMINGS CLERK AND RECORDER

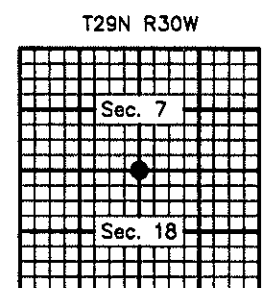
FEE: \$0.00

TO: FILED

BY: Debbie Murray Deputy

Cross Index No. J-3 T. 29N. R. 30W. P.M., MT

Adopted July 1, 1981, Montana Board of Professional Engineers & Land Surveyors



● corner this sheet