

CERTIFIED CORNER RECORDATION

Corner SW 1/16 S6 T. 29 N. R. 30 W. P.M.M. LINCOLN County

- I. Record: 1898 Original G.L.O. Subdivision of Fractional Township 29 North, Range 30 West, by Paul S. A. Rickel:
1984 Certified Corner Recordation by Thomas C. Hill, Reg. No. 5612S:

No record found.

Bearing N19°E, 4.2 ft. dist. from true corner position, found a 6 in. by 6 in. wood post protruding 1 1/2 ft. above ground, mkd. Fletcher on the SE face and USFS on the SW face, found no references. I reject the found corner post as there is no record of its establishment by correct procedures and its discrepancy with the true corner position. At the determined true corner position: Set an aluminum rod, 3/4 ins. diam. by 30 ins. long, set flush with the ground, with an attached 3 1/4 ins. diam. aluminum cap, marked:

SW 1/16 S6
 •
 5612S
 1986

From which established the following references:

- A fir, 10 ins. diam., bears S68°E, 67.2 ft. dist., mkd. SW 1/16 S6 BT.
 A pine, 5 ins. diam., bears N22°W, 24.5 ft. dist., mkd. X BT.

Set a 6 ft. galvanized steel guard post with a Survey Marker sign attached, 2 ft. East of corner. Painted red bands around the bearing trees and attached "Land Survey Monument" and "Bearing Tree" signs.

Coordinate position for this corner, based on Montana Coordinate System (North Zone):
 Y=531680.4999
 X=543834.0657

[the values expressed have an estimated uncertainty of +/- 0.7 ft., the listing to the ten-thousand's place is to provide mathematical conformity with my filed certificate of survey.]

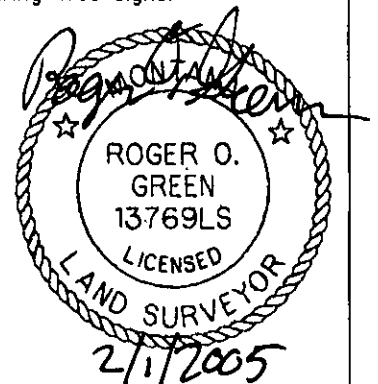
- II. Found: A 3 1/4 in. diam. aluminum cap, 4 ins. above ground, on a 3/4 in. diam. aluminum rod with the cap marked as shown above from which:

- A fir, 12 ins. diam., bears S68°E, 67.3 ft. dist., marked with a healed face.
 A down and rotten pine, bears N22°W, 24.5 ft. dist.

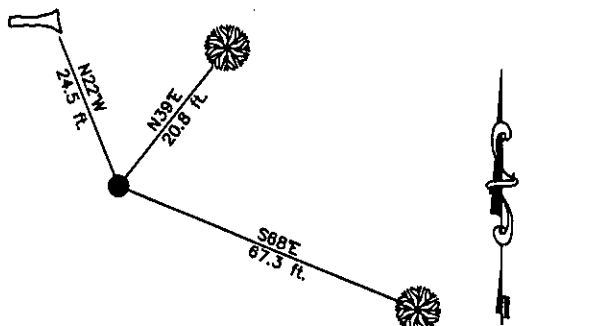
- III. Establish one new bearing trees:

- A pine, 6 ins. diam., bears N39°E, 20.8 ft. dist., mkd. SW 1/16 S 6 BT.

Painted a 6 in. red band around bearing trees and attached Land Survey Monument and Bearing Tree signs.



Date of Fieldwork: 5/14/2004
 Survey crew: Steve Boyer
 Magnetic declination: 18° East assumed
 Equipment used: Hand compass and loggers tape
 U.S. Forest Service, Supervisors Office, 1101 Hwy. 2 West, Libby, MT 59923 (406) 293-6211



SKETCH OF CORNER

NOT TO SCALE

CERTIFICATION

I, Steven A. Boyer 9750LS
 certify the information shown herein is true and correct.

Steven A. Boyer
 Signature Ground Party Chief

I, Roger O. Green
 certify that this Corner Record correctly represents work performed by me or under my direction in compliance with the "Corner Recordation Act" (70-22-101, et seq., M.C.A.)

Roger O. Green
 Signature of Surveyor & Seal

Date: 05/14/2004 Reg. No. 13769LS

Employer: U. S. Forest Service

Office of Clerk and Recorder, County of Lincoln This "corner

record" was filed 182251 BOOK: CCR CC&R'S PAGE: 10776 Pages: 1

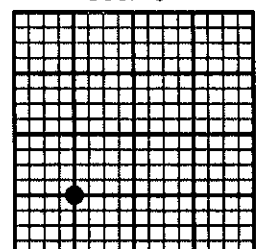
was noted on RECORDED: 02/02/2005 9:14 KOI: CC&R'S

book No. CORAL M. CUMMINGS CLERK AND RECORDER
 FEE: \$0.00 BY: Heather Dennis
 TO: FILED Deputy

Cross Index No. D-2 T. 29N. R. 30W. P.M., MT

Adopted July 1, 1981, Montana Board of Professional Engineers & Land Surveyors

Sec. 6



● corner this sheet