

177989 BOOK: CCR CC&R'S PAGE: 10651 Pages: 1
STATE OF MONTANA LINCOLN COUNTY
RECORDED: 07/27/2004 1:08 KOI: CC&R'S
CORAL M. CUMMINGS CLERK AND RECORDER
FEE: \$0.00 BY: Jeanne Dennis
TO: FILED deputy

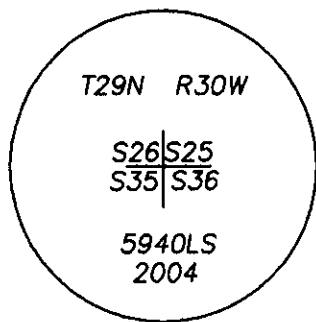
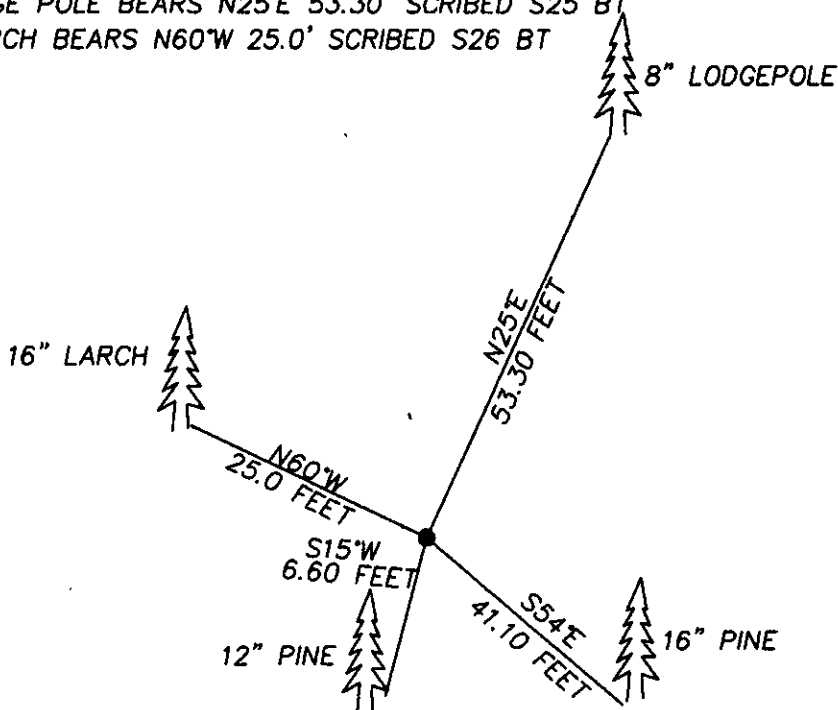
CERTIFIED CORNER RECORDATION

Corner NORTH WEST SECTION 36 T. 29N R. 30W P.M.M. LINCOLN County

GLO RECORD: SET 14x8x6 SLATE STONE WITH 1 NOTCH ON EAST & SOUTH FROM WHICH:
A 7" PINE BEARS N53°W 22.44 FEET SCRIBED T29N R30W S26 BT
A 7" PINE BEARS S15°30W 6.60 FEET SCRIBED T29N R30W S35 BT
A 7" PINE BEARS N35°30'E 18.48 FEET SCRIBED T29N R30W S25 BT
A 6" PINE BEARS S54°30E 40.92 FEET SCRIBED T29N R30W S36 BT

FOUND: ORIGINAL STONE FROM WHICH:
A PINE STUMP BEARS N53°W 22.50 FEET WITH NO SCRIBE
A 12" PINE BEARS S15°W 6.60 FEET WITH SCRIBE
A 16" PINE BEARS S54°E 41.0 FEET WITH SCRIBE
A PINE STUMP BEARS N35°E 18.50 FEET WITH NO SCRIBE

SET 3" ALUM. CAP STAMPED AS SHOWN, BURIED STONE ALONGSIDE, FROM WHICH:
NEW BT'S
A 8" LODGE POLE BEARS N25°E 53.30' SCRIBED S25 BT
A 16" LARCH BEARS N60°W 25.0' SCRIBED S26 BT



SKETCH OF CORNER

CERTIFICATION

1. DAN CROFT
certify the information shown herein is true and correct.

Dan Croft
Signature/Ground Party Chief

1. MARC J. CARSTENS
certify that this Corner Record correctly represents the corner as performed by me or under my direction in compliance with the "Corner Recordation Act" (70-22-101, et seq.)

Marc J. Carstens
Signature of Surveyor & Seal

Date: 06-29-04 Reg. No. 5940 I.S.

Employer: CARSTENS LAND SURVEYING



Office of Clerk and Recorder, County of LINCOLN . This 'corner record' was filed for record on 7-27-04

was noted on the cross-index plat and is assigned page No. 10651 , in

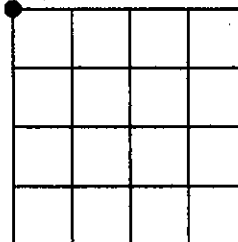
book No. 177989

Jeanne Dennis
County Official deputy

Cross Index No. V-21 T. 29N R. 30W PMM

Adopted July 1, 1981, Montana Board of Professional Engineers & Land Surveyors

Sec. 36



* corner this sheet