

177988 BOOK: CCR CC&R'S PAGE: 10650 Pages: 1
 STATE OF MONTANA LINCOLN COUNTY
 RECORDED: 07/27/2004 1:07 KOI: CC&R'S
 CORAL M. CUMMINGS CLERK AND RECORDER
 FEE: \$0.00 BY: Jeanie Dennis
 TO: FILED Deputy

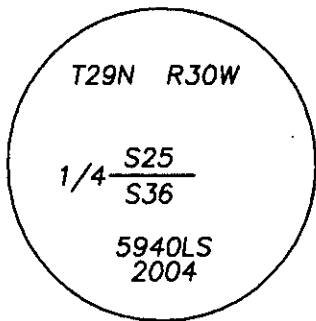
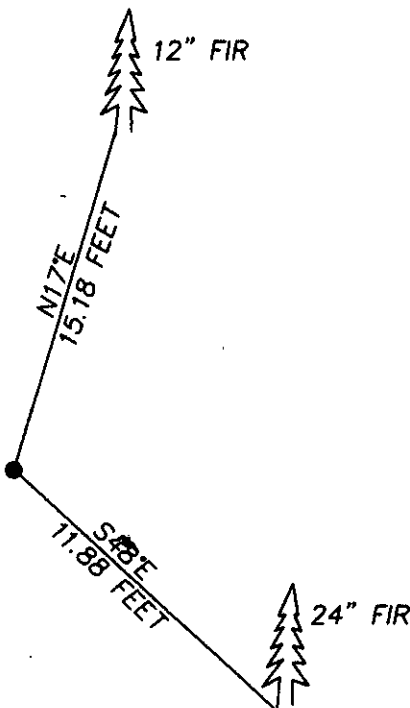
CERTIFIED CORNER RECORDATION

Corner NORTH 1/4 SECTION 36 T. 29N R. 30W P.M.M. LINCOLN County

GLO RECORD: SET 15x14x4 SLATE STONE WITH 1/4 ON NORTH FACE FROM WHICH:
 A 7" FIR BEARS N17°E 15.18 FEET SCRIBED 1/4 S25 BT
 A 11" FIR BEARS S48°E 11.88 FEET SCRIBED 1/4 S36 BT

FOUND: ORIGINAL STONE FROM WHICH:
 A 12" FIR BEARS N17°E 15.18 FEET WITH SCRIBE OVERGROWN
 A 24" FIR BEARS S48°E 11.88 FEET WITH SCRIBE OVERGROWN.

SET: 3" ALUM CAP STAMPED AS SHOWN, BURIED STONE ALONG SIDE.



SKETCH OF CORNER

CERTIFICATION

I, DAN CROFT
 certify the information shown herein is true and correct.

Dan Croft
 Signature of Ground Party Chief

I, MARC J. CARSTENS
 certify that this Corner Record correctly represents the corner
 performed by me or under my direction in compliance with
 the "Corner Recordation Act" (70-22-101, et seq.)

Marc J. Carstens
 Signature of Surveyor & Seal



Date: 06-29-04 Reg. No. 5940 LS

Employer: CARSTENS LAND SURVEYING

Office of Clerk and Recorder, County of LINCOLN. This 'corner
 record' was filed for record on 7-27-04

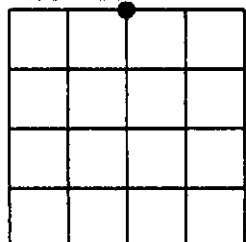
was noted on the cross-index plat and is assigned page No. 10650, in
 book No. 177988

Jeanie Dennis
 County Official Deputy

Cross Index No. V-23 T. 29N R. 30W P.M.M.

Adopted July 1, 1981, Montana Board of Professional Engineers & Land Surveyors

Sec. 36



• corner this sheet