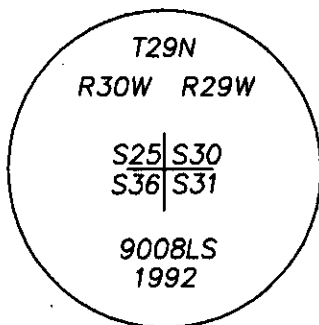
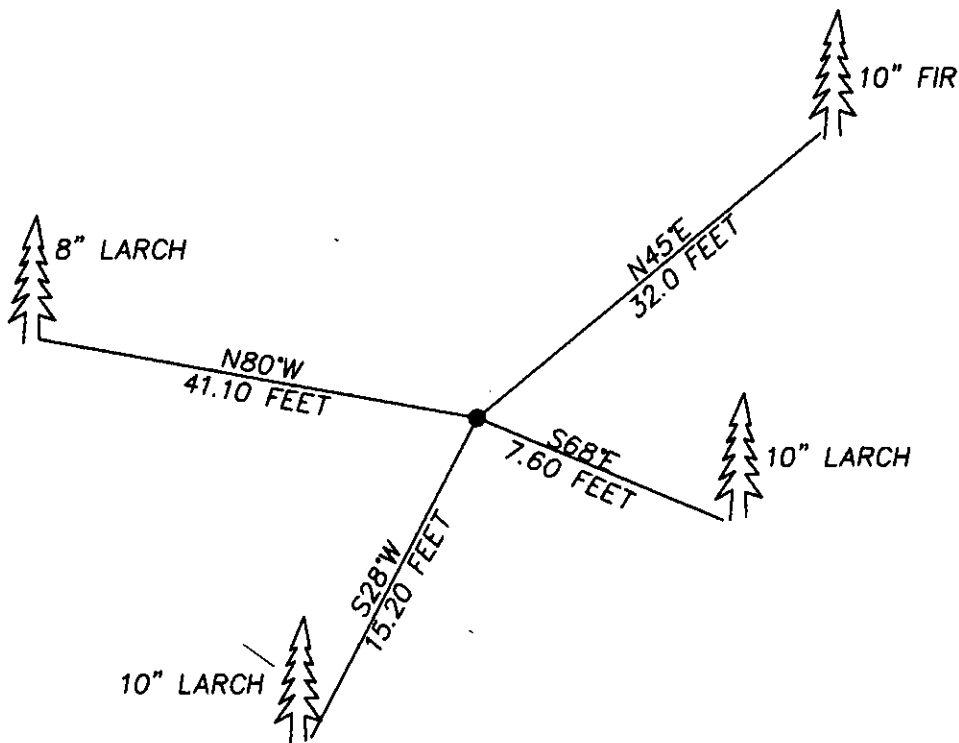


CERTIFIED CORNER RECORDATION

Corner NORTH WEST SECTION 36 T. 29N R. 30W P.M.M. LINCOLN County

FOUND: 3 1/4 INCH ALUM CAP STAMPED AS SHOWN FROM WHICH:
A 8" LARCH BEARS N80°W 41.10' FEET WITH OVERGROWN SCRIBE
A 10" LARCH BEARS S68°E 7.60 FEET WITH OVERGROWN SCRIBE
A 10" FIR BEARS N45°E 32.0 FEET WITH SCRIBE
A 10" LARCH BEARS S28°W 15.20 FEET WITH OVERGROWN SCRIBE



SKETCH OF CORNER

CERTIFICATION

I, DAN CROFT
certify the information shown herein is true and correct.

Dan Croft
Signature Ground Party Chief

I, MARC J. CARSTENS
certify that this Corner Record correctly represents the corner as
performed by me or under my direction in compliance with
the "Corner Recordation Act" (70-22-101, et seq.)

Marc J. Carstens
Signature of Surveyor & Seal

Date: 06-29-04 Reg. No. 5940 LS

Employer: CARSTENS LAND SURVEYING



Office of Clerk and Recorder, County of LINCOLN. This "corner
record" was filed for record on 7-27-04

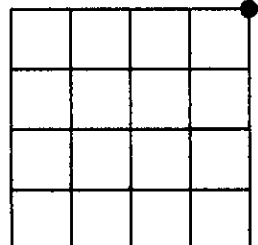
was noted on the cross-index plat and is assigned page No. 10649, in
book No. 177987

Jeannie Dennis - Deputy
County Official

Cross Index No. V-25 T. 29N R. 30W PHM

Adopted July 1, 1981, Montana Board of Professional Engineers & Land Surveyors

Sec. 36



• corner this sheet