

CERTIFIED CORNER RECORDATION

Corner EAST 1/4 SECTION 36 T. 29N R. 30W P.M.M. LINCOLN County

GLO RECORD: STONE 18x8x8 FROM WHICH:

A 12" FIR BEARS N88°45'W 34.98 FEET SCRIBED 1/4 S36 BT

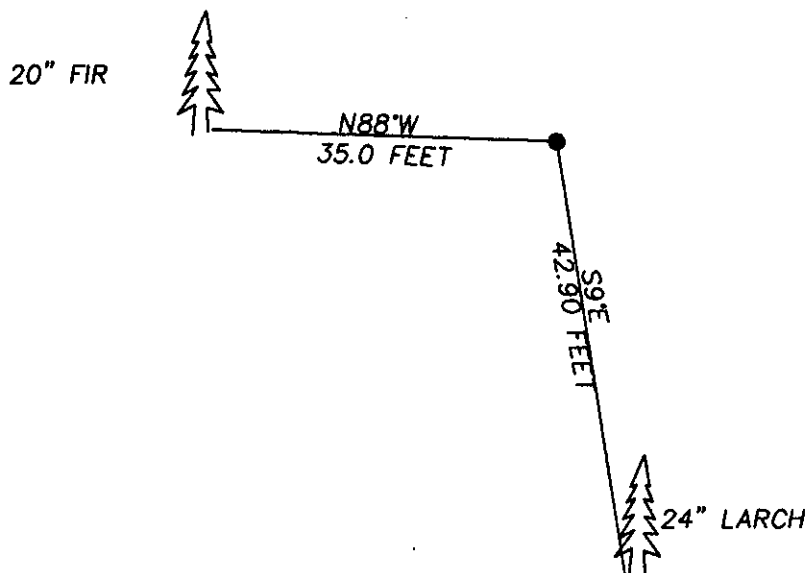
A 8" FIR BEARS S9°20'E 42.90 FEET SCRIBED 1/4 S31 BT

FOUND: ORIGINAL STONE FROM WHICH:

A 20" FIR BEARS N88°W 35.0 FEET SCRIBE OVERGROWN

A 16" FIR BEARS S9° 42.90 FEET SCRIBE OVERGROWN

SET: PAINTED STONE RED AND ATTACHED BT TAGS TO BEARING TREES.



SKETCH OF CORNER

CERTIFICATION

I, DAN CROFT

certify the information shown herein is true and correct.

Dan Croft
Signature/Ground Party Chief

I, MARC J. CARSTENS

certify that this Corner Record correctly represents the corner as performed by me or under my direction in compliance with the "Corner Recordation Act" (70-22-101, et seq.)

Marc J. Carstens
Signature of Surveyor & Seal

Date: 06-29-04 Reg. No. 5940 LS

Employer: CARSTENS LAND SURVEYING



Office of Clerk and Recorder, County of LINCOLN . This 'corner record' was filed for record on 7-27-04

was noted on the cross-index plat and is assigned page No. 10648 , in

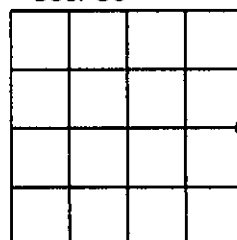
book No. 177986

Jeannie Dennis
County Official

Cross Index No. X-25 T. 29N R. 30W PMM

Adopted July 1, 1981, Montana Board of Professional Engineers & Land Surveyors

Sec. 36



* corner this sheet