

CERTIFIED CORNER RECORDATION

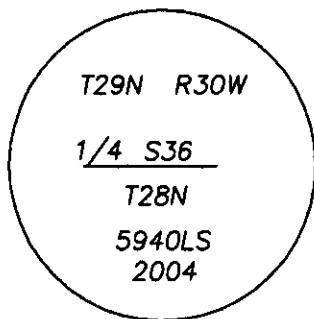
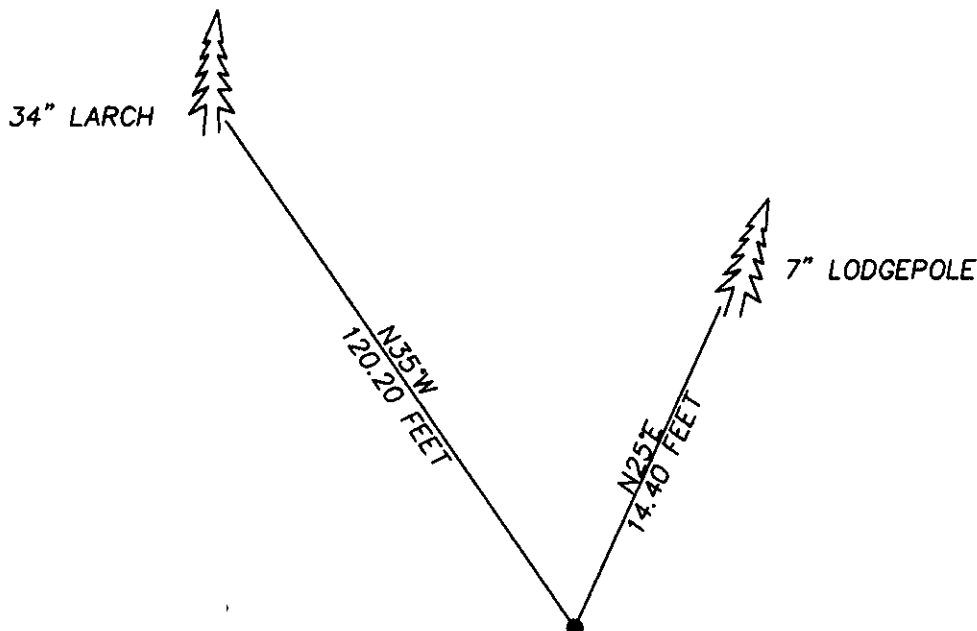
Corner SOUTH 1/4 SECTION 36 T. 29N R. 30W P.M.M. LINCOLN County

GLO RECORD: SET STONE 12x12x8 WITH SC 1/4 ON NORTH FACE, FROM WHICH:  
A 28" LARCH BEARS N45°30W 120.12 FEET WITH SCRIBED 1/4 S36 BT.  
A 12" FIR BEARS S87°10'E 13.20 FEET SCRIBED 1/4 S36 BT

FOUND: ORIGINAL STONE. FROM WHICH:  
A 34" LARCH BEARS N35°W 120.20 FEET WITH SCRIBED 1/4 S36 BT.

SET: 3" ALUM CAP STAMPED AS SHOWN, BURIED STONE ALONGSIDE.  
NEW BT

A 7" LODGE POLE BEARS N25° 14.40 FEET SCRIBED 1/4 S36 BT.



SKETCH OF CORNER

CERTIFICATION  
1. DAN CROFT  
certify the information shown herein is true and correct.  
[Signature]  
Signature of Ground Party Chief  
1. MARC J. CARSTENS  
certify that this Corner Record correctly represents the corner  
performed by me or under my direction in compliance with  
the "Corner Recordation Act" (70-22-101, et seq.) M. CARSTENS  
[Signature]  
Signature of Surveyor & Seal  
Date: 07-29-04 Reg. No. 5940 I.S.  
Employer: CARSTENS LAND SURVEYING



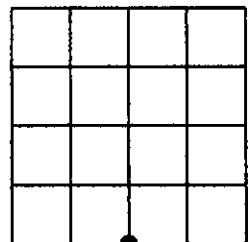
Office of Clerk and Recorder, County of LINCOLN . This 'corner  
record' was filed for record on 7-27-04

was noted on the cross-index plat and is assigned page No. 10646 , in  
book No. 177984 Juanita Dennis  
County Official deputy

Cross Index No. 7-23 T. 29N R. 30W PMM

Adopted July 1, 1981, Montana Board of Professional Engineers & Land Surveyors

Sec. 36



• corner this sheet