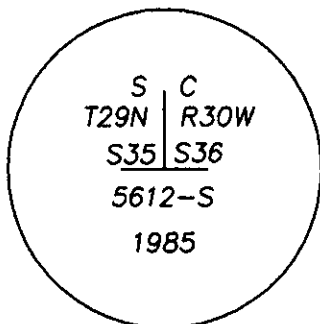
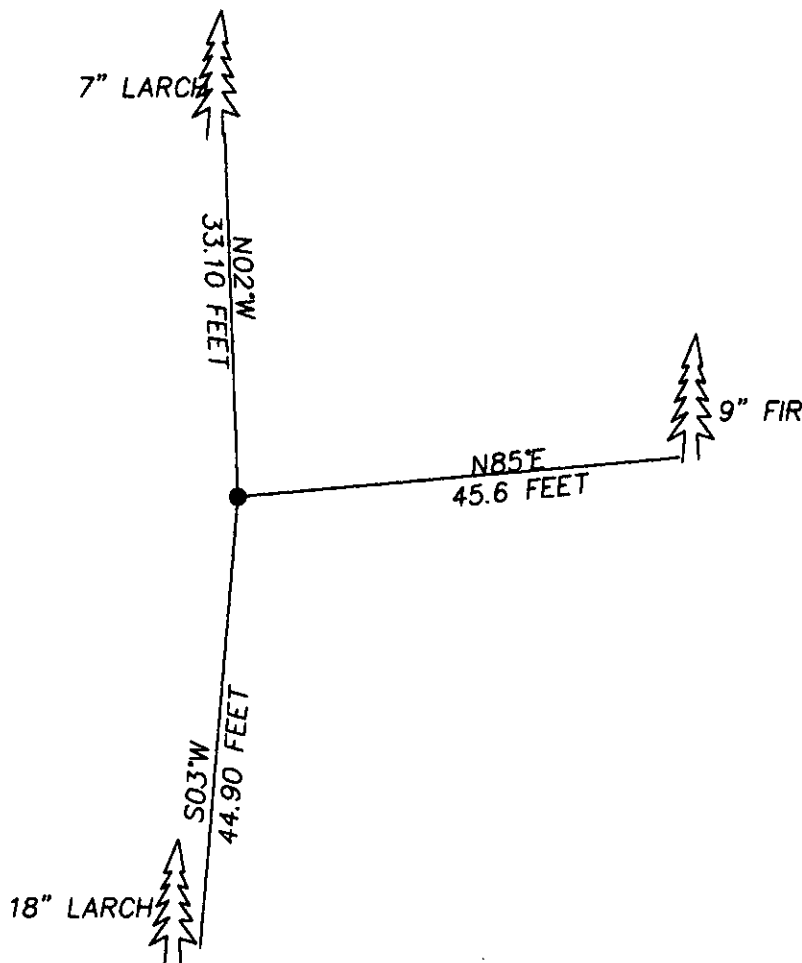


CERTIFIED CORNER RECORDATION

Corner SOUTH WEST SECTION 36 T. 29N R. 30W P.M.M. LINCOLN County

FOUND: 3" ALUM CAP STAMPED AS SHOWN, FROM WHICH:
A 9" FIR BEARS N85°E 45.6 FEET WITH SCRIBE OVERGROWN
A 7" LARCH BEARS N02°W 33.1 FEET WITH SCRIBE OVERGROWN
A 18 LARCH BEARS S03°W 44.90 FEET WITH SCRIBE



SKETCH OF CORNER

CERTIFICATION
I, DAN CROFT
certify the information shown herein is true and correct.
Dan Croft
Signature, Ground Party Chief
I, MARC J. CARSTENS
certify that this Corner Record correctly represents the corner
performed by me or under my direction in compliance with
the 'Corner Recordation Act' (70-22-101, et seq.)
Marc J. Carstens
Signature of Surveyor & Seal
Date: 07-29-04 Reg. No. 5940 LS
Employer: CARSTENS LAND SURVEYING

Office of Clerk and Recorder, County of LINCOLN . This 'corner
record' was filed for record on 7-27-04

was noted on the cross-index plat and is assigned page No. 10645 , in
book No. 17983 *Jeannie Alenew-deputy*
County Official

Cross Index No. 7-21 T. 29N R. 30W PMM

Adopted July 1, 1981, Montana Board of Professional Engineers & Land Surveyors

