

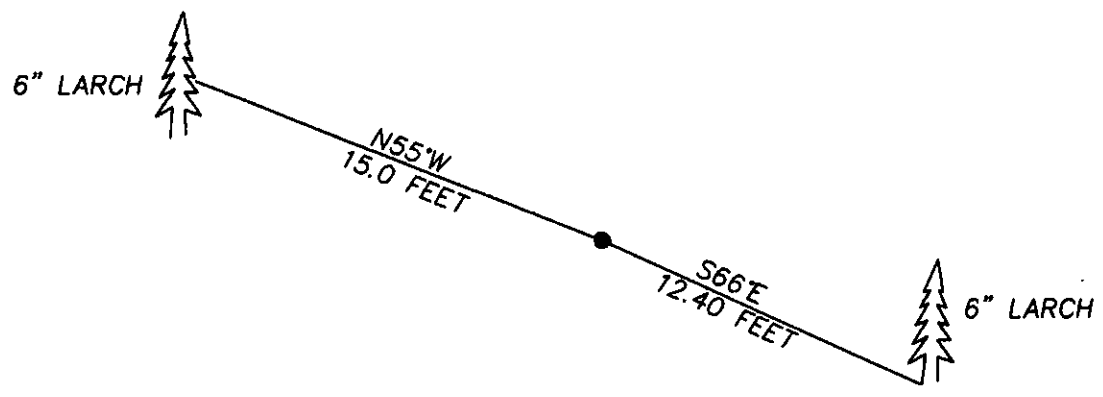
177982 BOOK: CCR CC&R'S PAGE: 10644 Pages: 1
 STATE OF MONTANA LINCOLN COUNTY
 RECORDED: 07/27/2004 1:01 KOI: CC&R'S
 CORAL M. CUMMINGS CLERK AND RECORDER
 FEE: \$0.00 BY: Jeanne Dennis Deputy
 TO: FILED

CERTIFIED CORNER RECORDATION

Corner WEST 1/4 SECTION 36 T. 29N R. 30W P.M.M. LINCOLN County

GLO RECORD: 16x14x4 SLATE STONE WITH 1/4 ON WEST, FROM WHICH:
 A 6" PINE BEARS N89°E 13.2 FEET SCRIBED 1/4 S36 BT
 A 7" PINE BEARS N86°W 17.82 FEET SCRIBED 1/4 S35 BT

FOUND: ORIGINAL STONE FROM WHICH:
 NEW BT
 A 6" LARCH BEARS S66°E 12.40 FEET SCRIBED 1/4 BT
 A 6" LARCH BEARS N55°W 15.0 FEET SCRIBED 1/4 BT

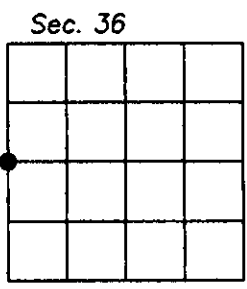


CERTIFICATION
 I, DAN CROFT
 certify the information shown herein is true and correct.
[Signature]
 Signature Ground Party Chief
 I, MARC J. CARSTENS
 certify that this Corner Record correctly represents the survey
 performed by me or under my direction in compliance with
 the "Corner Recordation Act" (70-22-101, et seq.)
[Signature]
 Signature of Surveyor & Seal
 Date: 07-29-04 Reg. No. 5940 LS
 Employer: CARSTENS LAND SURVEYING



SKETCH OF CORNER

Office of Clerk and Recorder, County of LINCOLN . This 'corner
 record' was filed for record on 7-27-04
 was noted on the cross-index plat and is assigned page No. 10644 , in
doc book No. 177982 Jeanne Dennis
 County Official Deputy



Cross Index No. X-21 T. 29N R. 30W P.M.M.

Adopted July 1, 1981, Montana Board of Professional Engineers & Land Surveyors

• corner this sheet

STATE OF MONTANA LINCOLN COUNTY
RECORDED: 07/27/2004 1:01 KOI: CC&R'S
CORAL M. CUMMINGS CLERK AND RECORDER
FEE: \$0.00 BY: Jeanne Dennis
TO: FILED

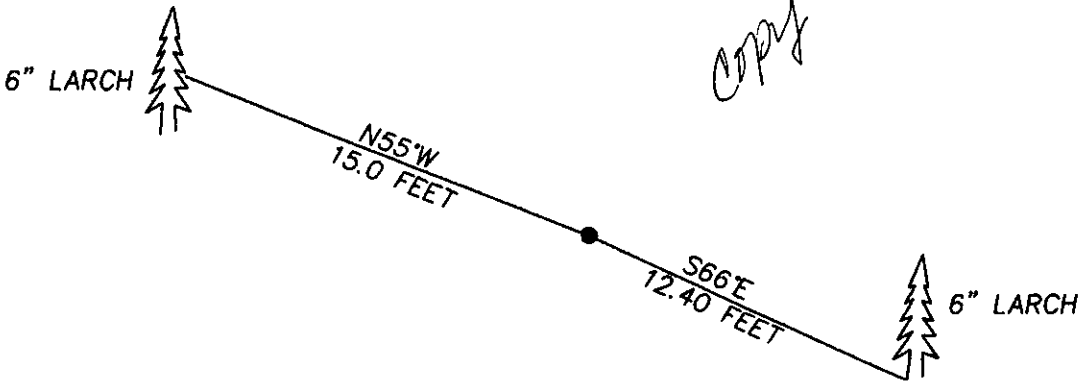
Jeanne Dennis
Deputy

CERTIFIED CORNER RECORDATION

Corner WEST 1/4 SECTION 36 T. 29N R. 30W P.M.M. LINCOLN County

GLO RECORD: 16x14x4 SLATE STONE WITH 1/4 ON WEST, FROM WHICH:
A 6" PINE BEARS N89°E 13.2 FEET SCRIBED 1/4 S36 BT
A 7" PINE BEARS N86°W 17.82 FEET SCRIBED 1/4 S35 BT

FOUND: ORIGINAL STONE FROM WHICH:
NEW BT
A 6" LARCH BEARS S66°E 12.40 FEET SCRIBED 1/4 BT
A 6" LARCH BEARS N55°W 15.0 FEET SCRIBED 1/4 BT



CERTIFICATION

I, DAN CROFT
certify the information shown herein is true and correct.

Dan Croft
Signature of Ground Party Chief

I, MARC J. CARSTENS
certify that this Corner Record correctly represents the corner
performed by me or under my direction in compliance with
the "Corner Recordation Act" (70-22-101, et seq.)

Marc J. Carstens
Signature of Surveyor & Seal



Date: 07-29-04 Reg. No. 5940 IS

Employer: CARSTENS LAND SURVEYING

SKETCH OF CORNER

Office of Clerk and Recorder, County of LINCOLN . This 'corner
record' was filed for record on 7-27-04

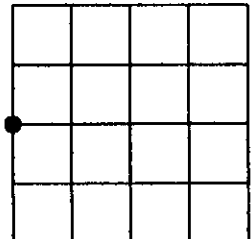
was noted on the cross-index plat and is assigned page No. 10644 , in
doc. book No. 177982

Jeanne Dennis
County Official Deputy

Cross Index No. X-21 T. 29N R. 30W P.M.M.

Adopted July 1, 1981, Montana Board of Professional Engineers & Land Surveyors

Sec. 36



* corner this sheet