

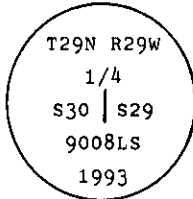
INSTRUCTIONS

1. Original and/or subsequent record used to evaluate the corner position.
2. Description of evidence found, note discrepancies in the record, state method of establishing lost or obliterated corners.
3. Description of monument and accessories set to perpetuate the corner position.
4. Sketch of corner, show all pertinent data which can best be shown in a sketch example, corner marking, topography ties, position of accessories, etc.
5. Certification must be signed and sealed by Land Surveyor registered in the State of Montana.
6. Fill in Cross Index & Section Diagram at bottom of sheet.

CERTIFIED CORNER RECORDATION

Corner 1/4 Cor. of secs. 29 & 30 T. 29 N. R. 29 W. P.M.M. Lincoln County

- I. 1898 G.L.O. record by Paul S. A. Bickel: "Set a slate stone, 15 x 8 x 5 ins. 10 ins. in the ground for 1/4 sec. cor. marked 1/4 on W face and raise a mound of stone 2 ft. base 1 1/2 ft. high W. of cor. Pits impracticable.
- II. Found a stone, 16 x 9 x 5 ins., laying loose on top of the ground, marked 1/4 on one face, could not determine original set position, stone was 8 ft. downhill from proportioned position, on a very steep hill side. No evidence of mound of stone found.
- III. At position determined by single proportion measurement; set a 2 1/2 ins. diam. aluminum pipe, 30 ins. long, 24 ins. in the ground with 3 1/4 ins. diam., U.S.D.A., Forest Service aluminum cap, marked as shown:



Establish two new Bearing Trees:

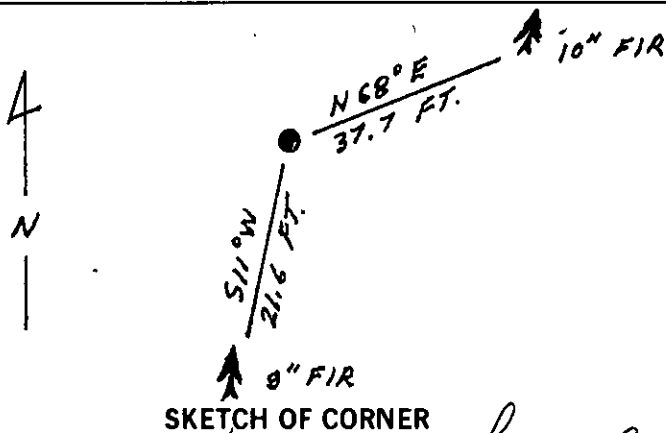
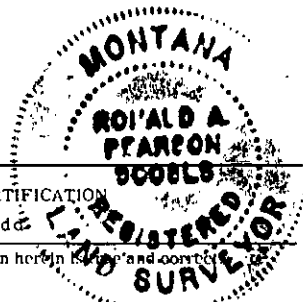
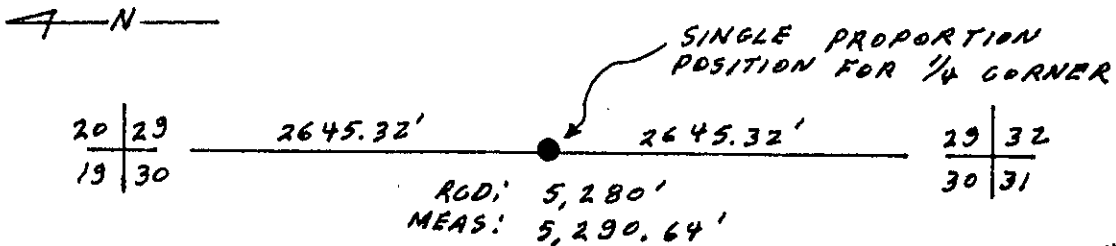
- A fir, 10 ins. diam., bears N68° E, 37.7 ft. dist., marked 1/4 S30 BT.
- A fir, 9 ins. diam., bears S11° W, 21.6 ft. dist., marked 1/4 S29 BT.

Painted red bands around the bearing trees and attached Land Survey Monument and Bearing Tree signs

Bury original stone alongside aluminum monument.

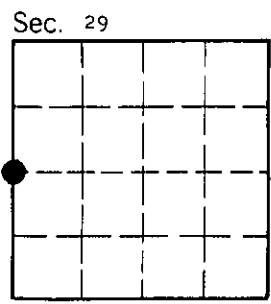
Set a 6 ft. galvanized steel guard post with Land Survey Marker and Property Boundary decals, South, 3 ft.

Magnetic Declination: 20° East



CERTIFICATION
 I, Kevin A. Todd
 certify the information shown herein is true and correct.
 Signature Ground Party Chief
 I, Ronald A. Pearson
 certify that this Corner Record correctly represents work performed by me or under my direction in compliance with the "Corner Recordation Act" (70-22-101, et seq., M.C.A.)
 Signature of Surveyor & Seal
 Date: 6/14/93 Reg. No. 9008LS
 Employer: U. S. FOREST SERVICE

Office of Clerk and Recorder, County of Lincoln. This "corner record" was filed for record on July 23, 1993 was noted on the cross-index plat and is assigned page No. 5337, in book No. _____ Coral M. Cunningham, DB County Official



Cross Index No. T-5 T. 29 N. 29 W. P.M.M.

• - corner this sheet