

INSTRUCTIONS

1. Original and/or subsequent record used to evaluate the corner position.
2. Description of evidence found, note discrepancies in the record, state method of establishing lost or obliterated corners.
3. Description of monument and accessories set to perpetuate the corner position.
4. Sketch of corner, show all pertinent data which can best be shown in a sketch example, corner marking, topography ties, position of accessories, etc.
5. Certification must be signed and sealed by Land Surveyor registered in the State of Montana.
6. Fill in Cross Index & Section Diagram at bottom of sheet.

CERTIFIED CORNER RECORDATION

Corner of Secs. 25, 30, 31, 36 T. 29 N. R. 29 W. P.M.M. Lincoln County

I. 1898 G.L.O. record by Paul S. A. Bickel: "Set a slate stone, 16 x 7 x 7 ins., 11 ins. in the ground, for cor. of Secs. 25, 30, 31 & 36 marked with 1 notch on S. and 5 notches on N. edges, from which

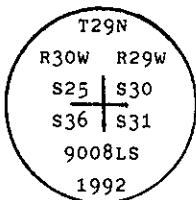
- A dead tamarack, 8 ins. diam., bears N86° E, 56 lks. dist., marked T29N R29W S30 BT.
- A dead tamarack, 16 ins. diam., bears S36° E, 59 lks. dist., marked T29N R29W S31 BT.
- A dead fir, 12 ins. diam., bears S74° W, 33 lks. dist., marked T29N R30W S36 BT.
- A dead fir, 14 ins. diam., bears N25° 25' W, 31 lks. dist., marked T29N R30W S25 BT."

1917 G.L.O. record by Ray D. Armstrong: Fractional Subdivisions of T29N R30W, "Intersect N. and S. line, 14 lks. S. of the cor. of secs. 25, 30, 31 and 36, which is a slate stone, 10 x 6 x 4 ins. above ground, firmly set, and marked as described by the Surveyor General. The bearing trees have fallen down, and there being no others available, I raise a mound of stone, 2 ft. base, 1 1/2 ft. high, W. of the cor."

II. Found a stone 9 x 6 x 16 ins., firmly set, mkd. with 5 notches on North face, from which

- Rotten remains, bears N86° E, 37.0 ft. (56 lks.) dist.
- Rotten remains, bears S36° E, 39.0 ft. (59 lks.) dist.
- A stump hole, bears S75° W, 22.0 ft. (33 lks.) dist.
- A stump hole, bears N26° W, 20.5 ft. (31 lks.) dist.
- A mound of stone 2 ft. diam. base by 1 1/2 ft. high, bears West. (1917 record)

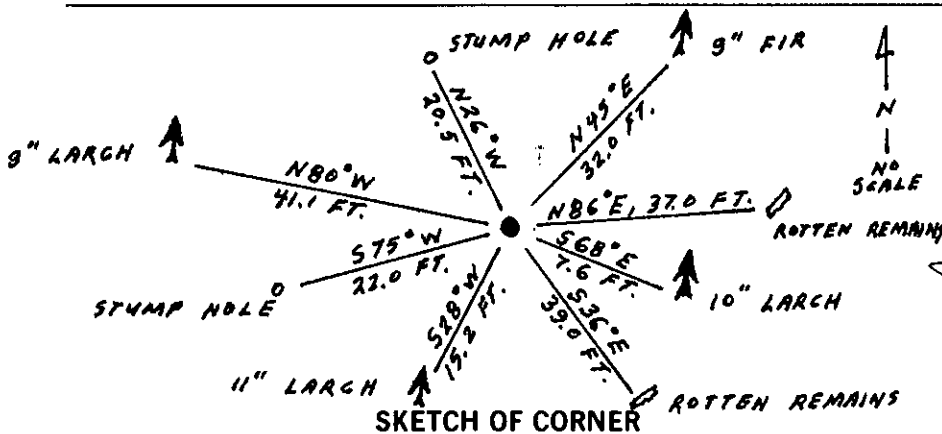
III. At determined position, set a 2 1/2 ins. diam. aluminum pipe, 30 ins. long, 24 ins. in the ground with 3 1/4 ins. diam., U.S.D.A., Forest Service aluminum cap, marked as shown:



Establish four new Bearing Trees:

- A fir, 9 ins. diam., bears N45° E, 32.0 ft. dist., mkd. T29N R29W S30 BT.
- A larch, 10 ins. diam., bears S68° E, 7.6 ft. dist., mkd. T29N R29W S31 BT.
- A larch, 11 ins. diam., bears S28° W, 15.2 ft. dist., mkd. T29N R30W S36 BT.
- A larch, 9 ins. diam., bears N80° W, 41.1 ft. dist., mkd. T29N R30W S25 BT.

Painted red bands around the bearing trees and attached Land Survey Monument and Bearing Tree signs.
 Bury original stone alongside aluminum monument.
 Set a 6 ft. galvanized steel guard post with Land Survey Marker and Property Boundary decals, East, 3 ft.
 Magnetic Declination: 20° East



MONTANA
 REGISTERED PROFESSIONAL SURVEYOR

CERTIFIED
 I. Kevin A. Todd
 certify the information shown hereon is correct.

Signature Ground: Paul Ghint

I. Ronald A. Pearson
 certify that this Corner Record correctly represents work performed by me or under my direction in compliance with the "Corner Recordation Act" (70-22-101, et seq., M.C.A.)

Ronald A. Pearson
 Signature of Surveyor & Seal

Date: 1/20/93 Reg. No. 9008LS

Employer: U. S. FOREST SERVICE

Office of Clerk and Recorder, County of Lincoln. This "corner record" was filed for record on Feb 3, 1993 was noted on the cross-index plat and is assigned page No. 5332, in book No. _____

Coral M. Cunningham
 County Official

Sec. 30

V-01
 Cross Index No. _____ T. 29 N R. 29 W PMM