

INSTRUCTIONS

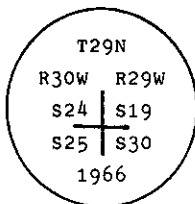
1. Original and/or subsequent record used to evaluate the corner position.
2. Description of evidence found, note discrepancies in the record, state method of establishing lost or obliterated corners.
3. Description of monument and accessories set to perpetuate the corner position.
4. Sketch of corner, show all pertinent data which can best be shown in a sketch example, corner marking, topography ties, position of accessories, etc.
5. Certification must be signed and sealed by Land Surveyor registered in the State of Montana.
6. Fill in Cross Index & Section Diagram at bottom of sheet.

CERTIFIED CORNER RECORDATION

Corner of Secs. 19, 24, 25, & 30 T. 29 N. R. 29 W. P.M.M. Lincoln County

- I. 1898 G.L.O. record by Paul S. A. Bickel: Set a stone monument and raise a mound of stones.

1966 B.L.M. remonumentation record by Woodrow E. Damm et al: "The cor. of secs. 19, 24, 25 and 30, monumented by a limestone, 24 x 12 x 4 ins., loosely set, mkd. with 4 notches on the N. edge and 2 notches on the S. edge, and witnessed by a mound of stone W. of the corner. At the corner point, set an iron post, 30 ins. long, 2 1/2 ins. diam., 24 ins. in the ground, with brass cap mkd.



from which:

- A fir, 6 ins. diam., bears N19° E, 147 lks. dist., mkd. T29N R29W S19 BT.
- A fir, 12 ins. diam., bears S60° E, 127 lks. dist., mkd. T29N R29W S30 BT.
- A pine, 14 ins. diam., bears S40° W, 98 lks. dist., mkd. T29N R30W S25 BT.
- A pine, 14 ins. diam., bears N70° W, 175 lks. dist., mkd. T29N R30W S24 BT.

Bury the original stone alongside and raise a collar of stone, 3 ft. diam., around the iron post."

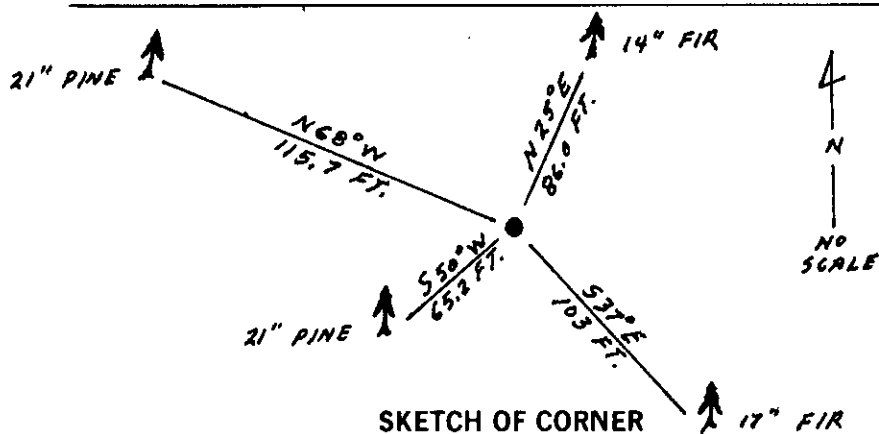
- II. Found a 2 1/2 ins. diam. iron pipe, 6 ins. above the ground, firmly set with 3 1/4 ins. diam., B.L.M. brass cap. marked as shown above, from which

- A fir, 14 ins. diam., bears N25° E, 86.0 ft. (130 lks.) dist., visible scribe.
(Record: N19° E, 147 lks.)
- A fir, 17 ins. diam., bears S37° E, 103 ft. (156 lks.) dist., healed face.
(Record: S60° E, 127 lks.)
- A pine, 21 ins. diam., bears S50° W, 65.2 ft. (99 lks.) dist., visible scribe. (Record: S40° W)
- A pine, 21 ins. diam., bears N68° W, 115.7 ft. (175 lks.) dist., mkd. T29N R30W S24 BT.

- III. Set a 6 ft. galvanized steel guard post with Land Survey Marker and Property Boundary decals, South, 3 ft.

Painted red bands around the bearing trees and attached Land Survey Monument and Bearing Tree signs.

Magnetic Declination: 20° East



CERTIFICATION

I, Kevin A. Todd
certify the information shown herein is true and correct.

Signature Ground Party Chief

Ronald A. Pearson

I, Ronald A. Pearson
certify that this Corner Record correctly represents work performed by me or under my direction in compliance with the "Corner Recordation Act" (70-22-101, et seq., M.C.A.)

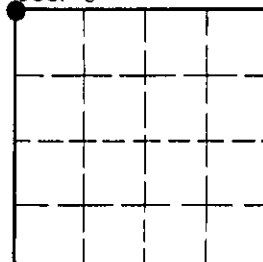
Signature of Surveyor & Seal

Date: 1/21/93 Reg. No. 9008LS

Employer: U.S. FOREST SERVICE

Office of Clerk and Recorder, County of Lincoln. This "corner record" was filed for record on Feb 3, 1993 was noted on the cross-index plat and is assigned page No. 5330, in book No. Coral M. Cummings DB
County Official

Sec. 30



Cross Index No. R-01 T. 29 N R. 29 W P.M.M.