

INSTRUCTIONS

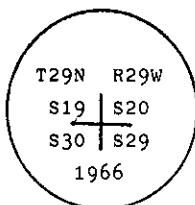
1. Original and/or subsequent record used to evaluate the corner position.
2. Description of evidence found, note discrepancies in the record, state method of establishing lost or obliterated corners.
3. Description of monument and accessories set to perpetuate the corner position.
4. Sketch of corner, show all pertinent data which can best be shown in a sketch example, corner marking, topography ties, position of accessories, etc.
5. Certification must be signed and sealed by Land Surveyor registered in the State of Montana.
6. Fill in Cross Index & Section Diagram at bottom of sheet.

CERTIFIED CORNER RECORDATION

Corner of Secs. 19, 20, 29, & 30 T. 29 N. R. 29 W. P.M.M. Lincoln County

I. 1898 G.L.O. record by Paul S. A. Bickel: Set a stone monument and four bearing trees.

1966 B.L.M. remonumentation record by Woodrow E. Damm et al: "The cor. of secs. 19, 20, 29 and 30, monumented with a slate stone, 12 x 8 x 6 ins., firmly set, mkd. with 5 notches on the E. edge and 2 notches on the S. edge, and witnessed by the remains of the original bearing trees. At the corner point, set an iron post, 30 ins. long, 2 1/2 ins. diam., 24 ins. in the ground, with brass cap mkd.



The original bearing trees:

- A stump, bears N7°35'E, 120 lks. dist., visible marks BT. (Record)
- A dead pine, bears S35°35'E, 113 lks. dist., mkd. T29N R29W S29 BT.
- A stump hole, bears S50°15'W, 180 lks. dist., fallen log mkd. BT. (Record)
- A fir, 17 ins. diam., bears N52°W, 136 lks. dist., mkd. with an overgrown blaze. (Record)

The new bearing trees:

- A fir, 10 ins. diam., bears N28 1/2°E, 70 lks. dist., mkd. T29N R29W S20 BT.
- A tamarack, 14 ins. diam., bears S80 1/2°E, 38 lks. dist., mkd. T29N R29W S29 BT.
- A fir, 12 ins. diam., bears S1 1/2°W, 32 lks. dist., mkd. T29N R29W S30 BT.

Bury the original stone alongside and raise a collar of stone, 3 ft. diam., around the iron post."

II. Found a 2 1/2 ins. diam. iron pipe, 6 ins. above the ground, firmly set with 3 1/4 ins. diam., B.L.M. brass cap, marked as shown above, from which

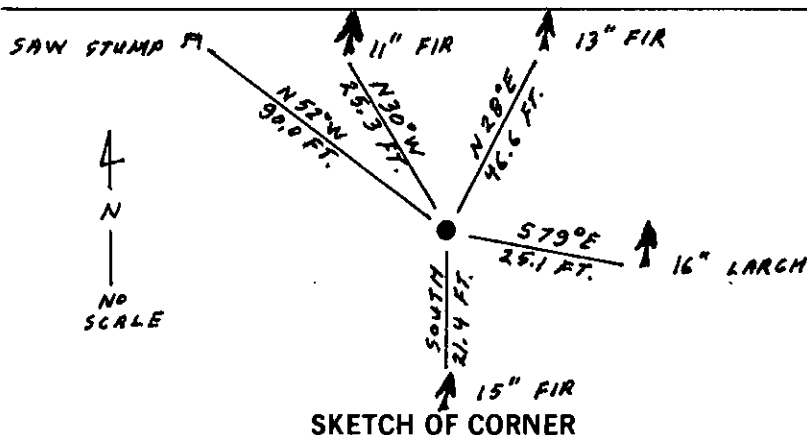
- A fir, 13 ins. diam., bears N28°E, 46.6 ft. (71 lks.) dist., mkd. T29N R29W S20 BT.
- A larch, 16 ins. diam., bears S79°E, 25.1 ft. (38 lks.) dist., healed face.
- A fir, 15 ins. diam., bears South, 21.4 ft. (32 lks.) dist., healed face.
- A saw stump, bears N52°W, 90.0 ft. (136 lks.) dist.,

III. Establish one new bearing tree:

- A fir, 11 ins. diam., bears N30°W, 25.3 ft. dist., mkd. T29N R29W S19 BT.

Painted red bands around the bearing trees and attached Land Survey Monument and Bearing Tree signs.

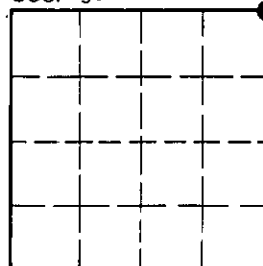
Magnetic Declination: 20° East



MONTANA
CERTIFICATE OF CORNER RECORDATION
I, Kevin A. Todd **REGISTERED SURVEYOR**
certify the information shown herein is true and correct.
Signature of Ground Party: Ronald A. Pearson
I, Ronald A. Pearson
certify that this Corner Record correctly represents work performed by me or under my direction in compliance with the "Corner Recordation Act" (70-22-101, et seq., M.C.A.)
Signature of Surveyor & Seal: Ronald A. Pearson
Date: 1/21/93 Reg. No. 90081S
Employer: U.S. FOREST SERVICE

Office of Clerk and Recorder, County of Lincoln. This "corner record" was filed for record on Feb 3, 1993 was noted on the cross-index plat and is assigned page No. 5329, in book No. Coral M. Cummings By PB County Official

Sec. 30



Cross Index No. R-05 T. 29 N R. 29 W PMM

• - corner this sheet