

CERTIFIED CORNER RECORDATION

Corner CN 1/16 S22 T. 29 N. R. 29 W. P.M.M. Lincoln County

I. Record: None

II. Found: No monument or accessories found during area search.

III. Perpetuation: At the corner point, determined by survey, set a 5/8 ins. diam. steel rebar 30 ins. long 28 ins. in the ground, with a 3 1/4 ins. diam. USFS Aluminum cap marked as shown below from which:

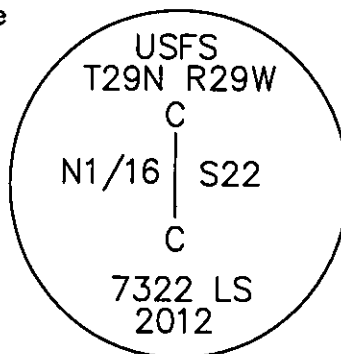
A pine, 20 ins. diam., bears N.78° E., 27.30 ft. dist., scribed CN 1/16 S22 BT.
A pine, 21 ins. diam., bears S.56° E., 36.50 ft. dist., scribed CN 1/16 S22 BT.

Painted faces and 6 in. wide red bands to all bearing trees and attached Land Survey Monument and Bearing Tree signs.

A 6ft. steel post bears East 2.65 ft. dist.
A 6ft. steel post bears South 11.00 ft. dist.
Attach Property Line and Land Survey Monument decals to both posts.

Magnetic declination: 18° East

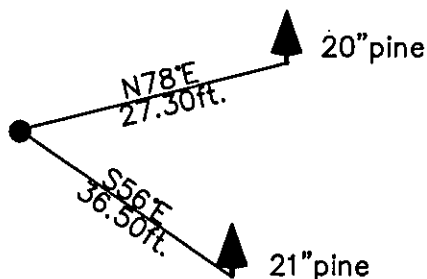
Equipment used: Hand compass and loggers tape



See Certificate of Survey No. 4160 Lincoln County Records for additional Survey information.

Kootenai Surveyors Inc., 314 California Av., Libby, MT. 59923 (406) 293-4354

ARIANNA-PCTC



SKETCH OF CORNER

CERTIFICATION

I, Levi Powell
certify the information shown herein is true and correct.

Levi Powell
Signature Ground Party Officer

I, Alvah F. Hughes
certify that this Corner Record correctly represents work performed by me or under my direction in compliance with the "Corner Recordation Act" (70-22-101, et seq., M.C.A.), S

Alvah F. Hughes
Signature of Supervisor & Seal

Date: 6/08/2012 Reg. No. 7322-LS

Employer: Kootenai Surveyors Inc.

Office of Clerk 239236 BOOK: CCR CC&R'S PAGE: 11969 Pages: 1

record" was fi STATE OF MONTANA LINCOLN COUNTY
RECORDED: 06/15/2012 10:17 KOI: CC&R'S

was noted on TAMMY D. LAUER CLERK AND RECORDER

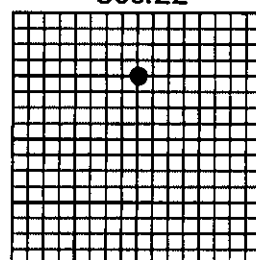
book No. FEE: \$0.00

TO: FILED

BY: Robin A. Benson, Deputy

County Official

Sec.22



• corner this sheet

Cross Index No. 0 15 T. 29N R. 29W P.M., MT

Adopted July 1, 1981, Montana Board of Professional Engineers & Land Surveyors