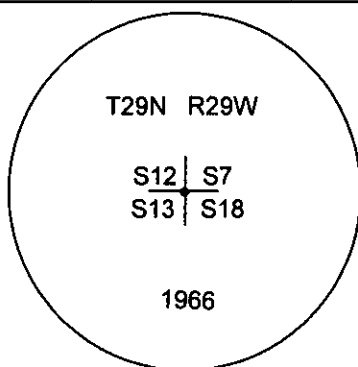
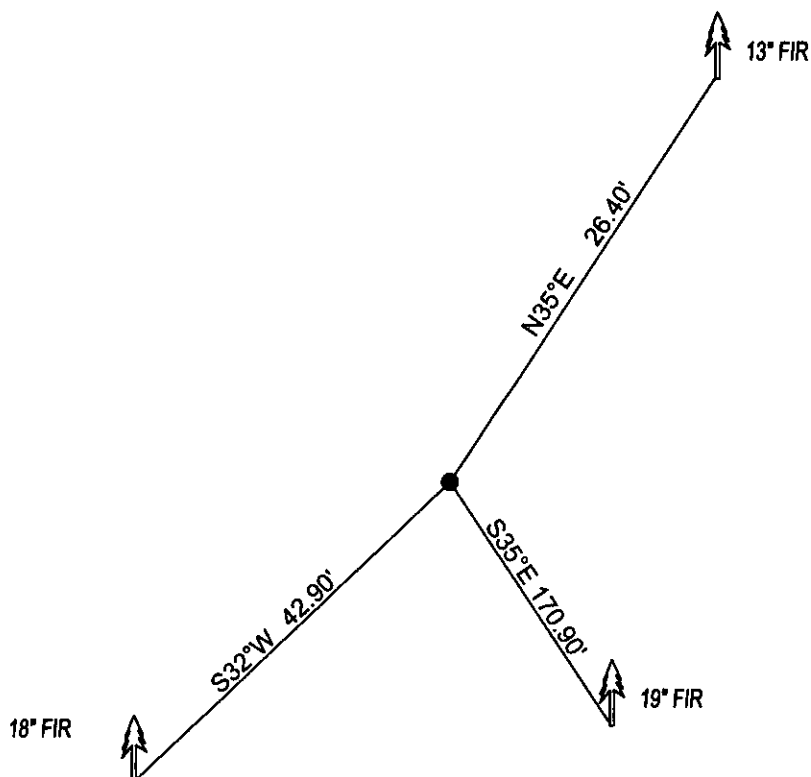


# CERTIFIED CORNER RECORDATION

Corner NE CORNER SEC.13 T. 29N R. 29W P.M.M. County LINCOLN

FOUND: 2 1/2" BRASS CAP STAMPED AS SHOWN, FROM WHICH:  
13" FIR BEARS N35°E 26.40' SCRIBE OVERGROWN.  
19" FIR BEARS S35°E 170.90' SCRIBE OVERGROWN.  
18" FIR BEARS S47°W 58.74' WITH OVERGROWN SCRIBE.

MAINTENANCE: REMOVED BRUSH FROM CORNER AREA. SET 5 FOOT STEEL POST ALONGSIDE OF CORNER  
ATTACHED BT TAGS AND PAINTED A RED 6" BAND AND SCRIBE RED



SKETCH OF CORNER

## CERTIFICATION

I, DAN CROFT  
certify the information shown herein is true and correct

Signature Ground Party Chief

I, MARC J. CARSTENS  
certify that this Corner Record correctly represents work  
performed by me or under my direction in compliance with  
the "Corner Recordation Act" (70-22-101 et seq., M.C.A.)

[Signature]  
Signature of Surveyor & Seal



Date: 09-2011 Reg. No. 5940 LS

Employer: CARSTENS LAND SURVEYING

Office of Clerk and Recorder, County of LINCOLN . This "corner

record" was filed for record on 234775 BOOK: CCR CC&R'S PAGE: 11911 Pages: 1

STATE OF MONTANA LINCOLN COUNTY

was noted on the cross-index pk: RECORDED: 09/20/2011 10:15 KOI: CC&R'S

book No. TAMMY D. LAUER CLERK AND RECORDER

FEE: \$0.00

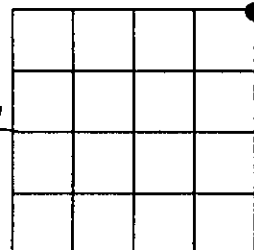
BY: [Signature]

TO: CARSTENS LAND SURVEYING P.O. BOX 1374, POLSON, MONTANA

Cross Index No. J-25 T. 29N R. 29W PMM

Adopted July 1, 1981, Montana Board of Professional Engineers & Land Surveyors

Sec. 13



• corner this sheet