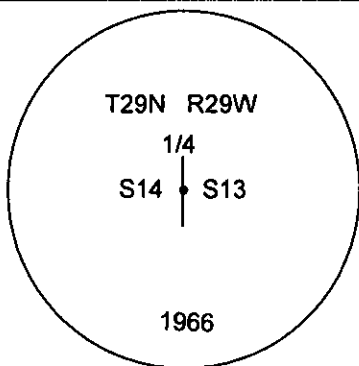
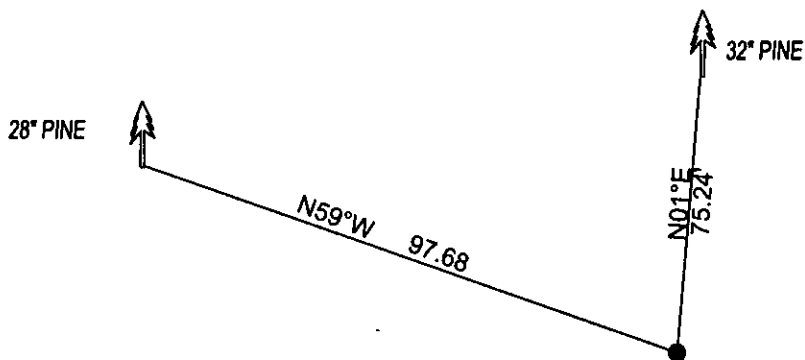


# CERTIFIED CORNER RECORDATION

Corner W1/4 SEC. 13 T. 29N R. 29W P.M.M. County LINCOLN

FOUND: 2 1/2" BRASS CAP STAMPED AS SHOWN, FROM WHICH:  
32" PINE BEARS N01°E 75.24' SCRIBE OVERGROWN.  
28" PINE BEARS N59°W 97.68' SCRIBE OVERGROWN.

MAINTENANCE: REMOVED BRUSH FROM CORNER AREA. SET 5 FOOT STEEL POST ALONGSIDE OF CORNER  
ATTACHED BT TAGS AND PAINTED A RED 6" BAND AND SCRIBE RED



SKETCH OF CORNER

## CERTIFICATION

I, DAN CROFT  
certify the information shown herein is true and correct.

Signature Ground Party Chief

I, MARC J. CARSTENS  
certify that this Corner Record correctly represents work  
performed by me or under my direction in compliance with  
the "Corner Recordation Act" (7-22-01, et seq., M.C.A.)

  
Signature of Surveyor & Seal



Date: 09-2011 Reg. No. 5940 LS

Employer: CARSTENS LAND SURVEYING

Office of Clerk and Recorder, County of LINCOLN This "corner

record" was filed for record on 234774 BOOK: CCR CC&R'S PAGE: 11910 Pages: 1

STATE OF MONTANA LINCOLN COUNTY

was noted on the cross-index p RECORDED: 09/20/2011 10:10 KOI: CC&R'S

TAMMY D. LAUER CLERK AND RECORDER

book No. \_\_\_\_\_ FEE: \$0.00

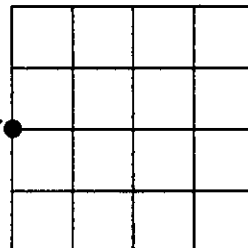
BY: 

TO: CARSTENS LAND SURVEYING P.O. BOX 1374, POLSON, MONTANA

Cross Index No. L-21 T. 29N R. 28W PMM

Adopted July 1, 1981, Montana Board of Professional Engineers & Land Surveyors

Sec. 13



• corner this sheet